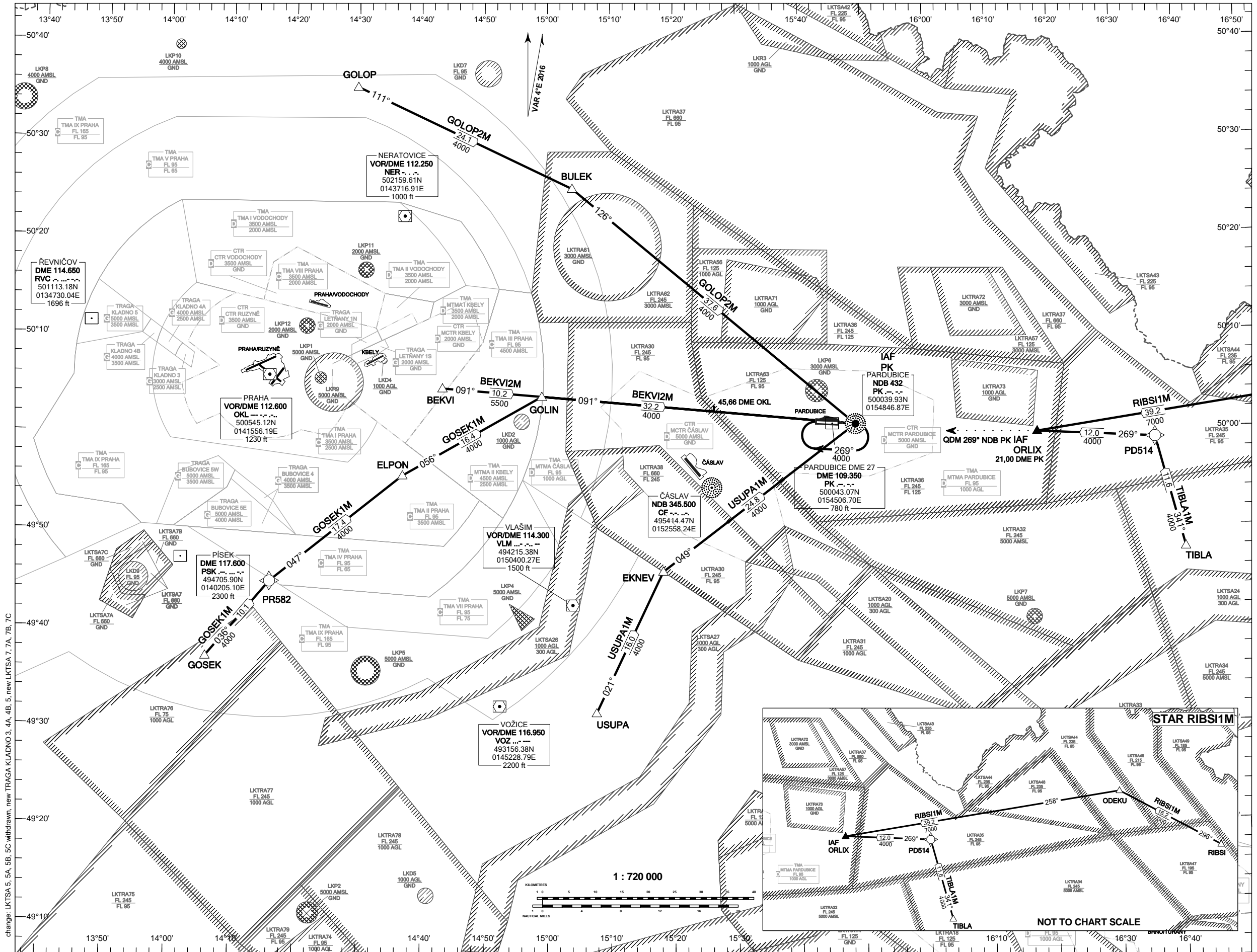
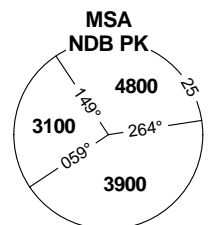


**RNAV STANDARD ARRIVAL CHART -
INSTRUMENT (STAR) - ICAO**

**PARDUBICE
RNAV STAR RWY 09-27**



PARDUBICE APPROACH / RADAR	128.365
PARDUBICE TOWER	120.155 Q/R
EMERGENCY FREQ	121.500 (reserve)



BEARINGS, TRACKS AND
RADIALS ARE MAGNETIC
ALTITUDES AND ELEVATIONS
ARE IN FEET
DISTANCES ARE IN NM

TRANSITION ALTITUDE
5000

change: LKTS5, 5A, 5B, 5C withdrawn, new TRAGA KLADNO 3, 4A, 4B, 5, new LKTS7, 7A, 7B, 7C