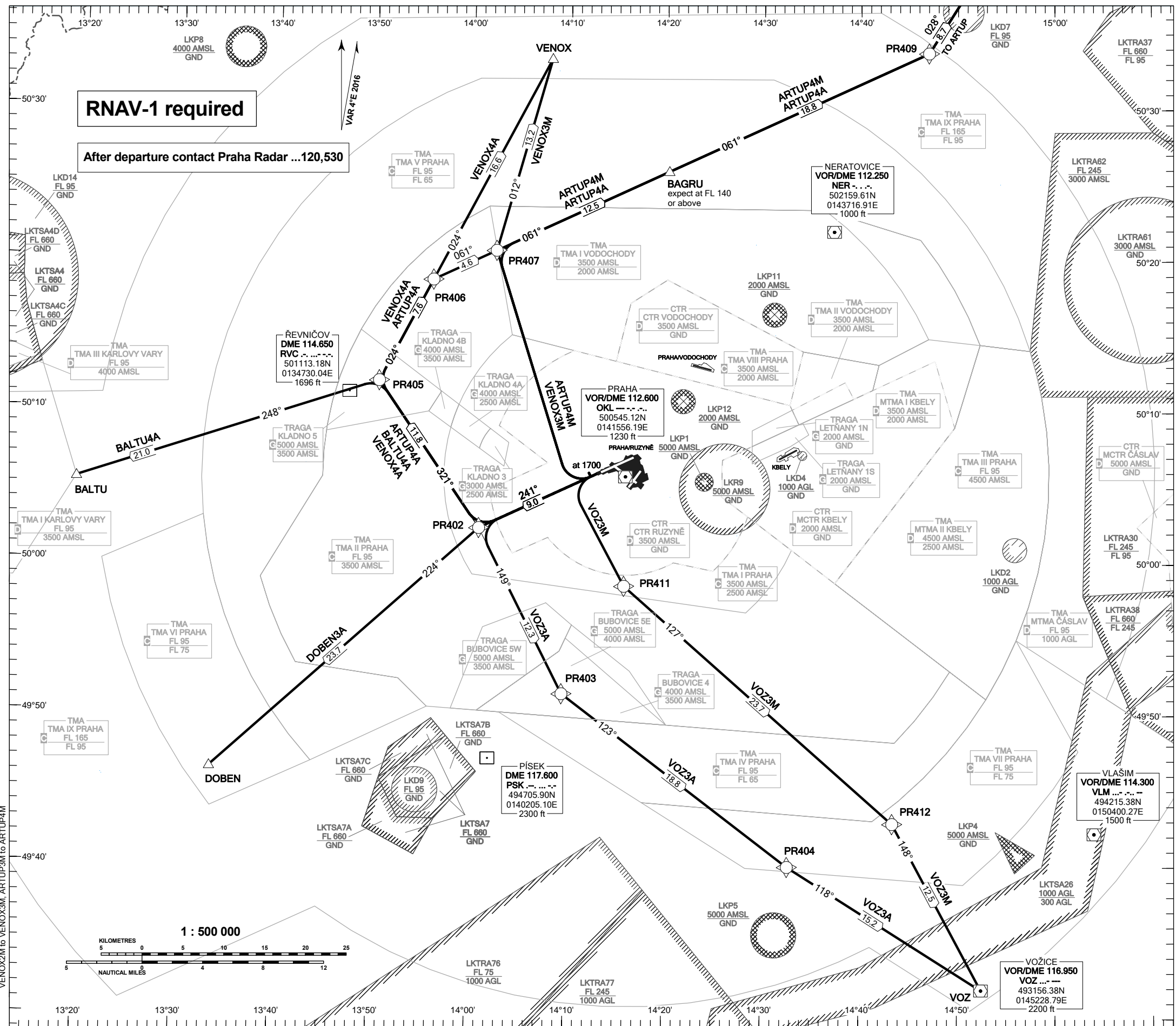


**RNAV STANDARD DEPARTURE CHART -  
INSTRUMENT (SID) - ICAO**

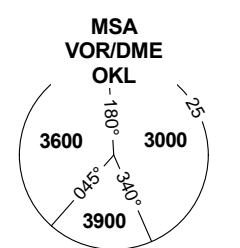
**PRAHA/RUZYŇĚ  
RNAV SID RWY 24**



**RNAV-1 required**

After departure contact Praha Radar ... 120,530

PRAHA APPROACH / RADAR	120.530
RUZYŇĚ APPROACH / RADAR	127.580
RUZYŇĚ RADAR / INFORMATION	118.310
SUPPLEMENTARY FREQ APP	136.080
RUZYŇĚ DELIVERY	120.060
RUZYŇĚ TOWER	134.560
SUPPLEMENTARY FREQ TWR	118.110
RUZYŇĚ GROUND	121.910
RUZYŇĚ ATIS	122.160
EMERGENCY FREQ	121.500



TRANSITION ALTITUDE  
5000

DEPARTURE SPEED LIMIT BELOW FL 100	
JETS	MAX IAS 250 KT
PROPS	MAX IAS 180 KT

BEARINGS, TRACKS AND  
RADIALS ARE MAGNETIC  
ALTITUDES AND ELEVATIONS  
ARE IN FEET  
DISTANCES ARE IN NM

see AIP AD 2-LKPR-33, 2.22.4.3.5

change: LKTS A 5, 5A, 5B, 5C withdrawn, new TRAGA KLADNO 3, 4A, 4B, 5, new LKTS A 7, 7A, 7B, 7C  
VENOX2M to VENOX3M, ARTUP3M to ARTUP4M