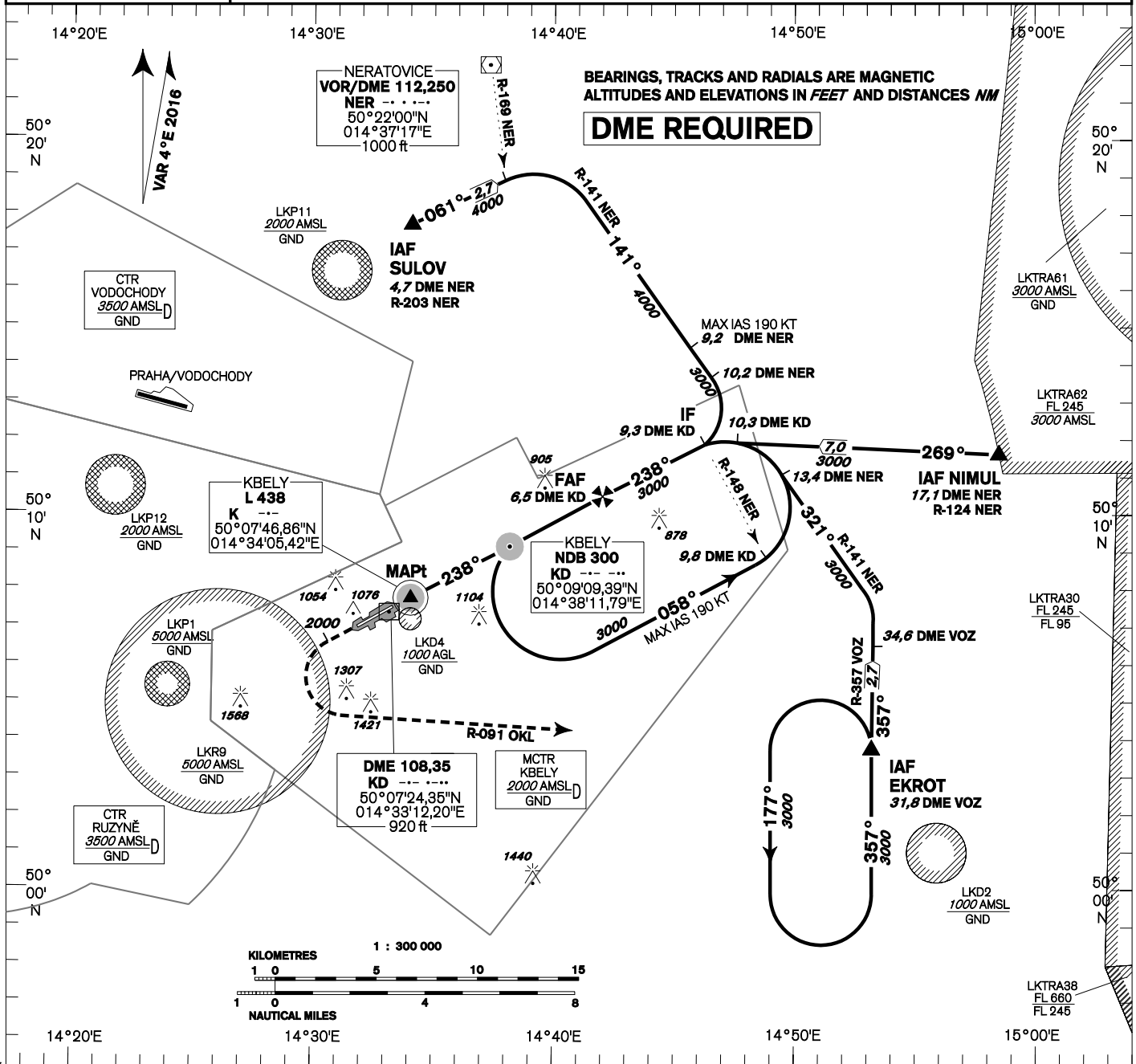


<b>INSTRUMENT APPROACH CHART - ICAO</b>	<b>AERODROME ELEV 939</b> <b>THR RWY 06 ELEV 939</b> <b>THR RWY 24 ELEV 916</b> <b>ARP 919</b> <b>OCH RELATED TO THR RWY 24</b>	<b>KBELY APPROACH/ RADAR 124,680 291,050 reserve</b> <b>KBELY PRECISION 126,760 123,300 reserve</b> <b>KBELY TOWER 120,880 134,730 reserve</b>	<b>MSA ARP LKKB</b> 
			<b>KBELY NDB RWY 24</b>



**MISSED APPROACH:**  
Climb to 2000ft MAX 2,7NM  
KD DME/MNM 8,7NM OKL DME,  
turn left intercept radial R 091 OKL  
then climb to 3000ft continue to EKROT

**MISSED APPROACH:**  
to IAS ≤ 185 kt min. bank angle 15°  
to IAS ≤ 230 kt min. bank angle 20°  
IAS MAX = 230 KT

THR 500731.93N, 0143321.70E  
ELEV 916

change: Missed Approach - IAS, IAS MAX

OCA/OCH	A	B	C	D				DME KD NM	6,5	5,0	4,0	3,0	2,0	1,0	0,5		
Straight - in Approach	NDB	ft	1214/296						ALTITUDES	ft	3000	2500	2241	1912	1607	1286	1115
Straight - in Approach	PAR	ft	1155/239						kt	60	90	120	150	180			
Circling (South only)	ft	1345	1656	1971	-				min:sec	5:49	3:53	2:55	2:20	1:57			
									Rate of descent	ft/min	315	470	640	790	960		

Timing is not authorized for defining the MAPt.