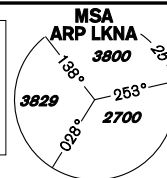


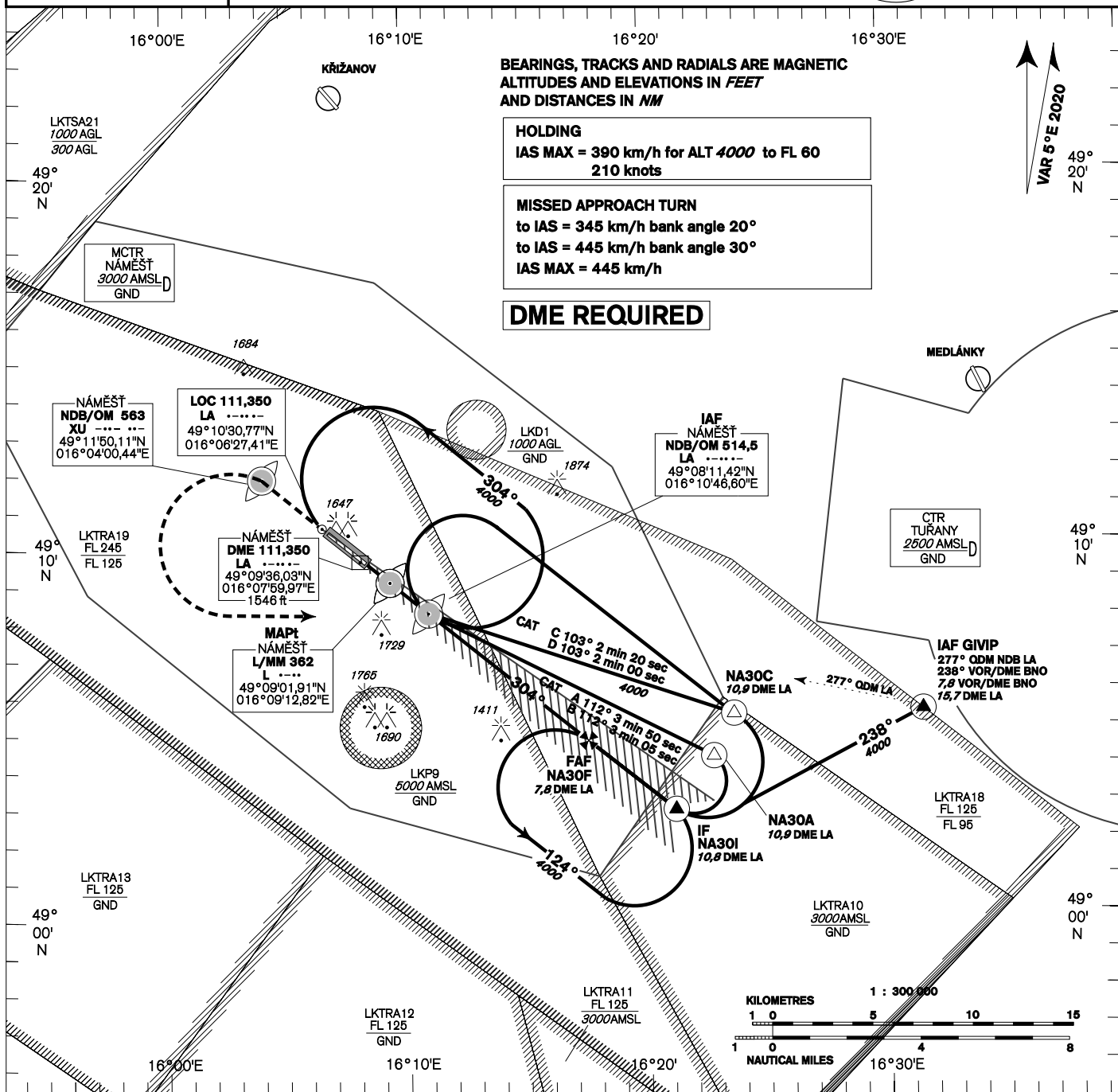
# INSTRUMENT APPROACH CHART - ICAO

**AERODROME ELEV 1547**  
**THR RWY 12 ELEV 1547**  
**THR RWY 30 ELEV 1496**  
**OCH RELATED TO THR RWY 30**

**NÁMĚŠŤ APPROACH/ 118,155 266,200 reserve**  
**RADAR**  
**PRECISION 283,900 123,300 reserve**  
**TOWER 126,505 119,830 reserve**



**NÁMĚŠŤ ILS RWY 30**



**BEARINGS, TRACKS AND RADIALS ARE MAGNETIC**  
**ALTITUDES AND ELEVATIONS IN FEET**  
**AND DISTANCES IN NM**

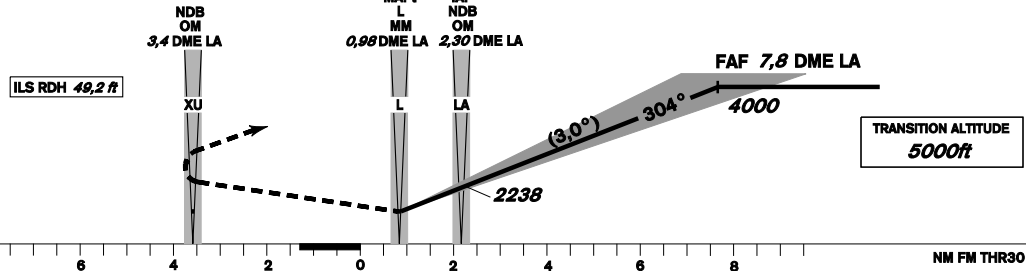
**HOLDING**  
**IAS MAX = 390 km/h for ALT 4000 to FL 60**  
**210 knots**

**MISSED APPROACH TURN**  
**to IAS = 345 km/h bank angle 20°**  
**to IAS = 445 km/h bank angle 30°**  
**IAS MAX = 445 km/h**

**DME REQUIRED**

**VAR 5° E 2020**  
 49° 20' N

**MISSED APPROACH:**  
 Proceed to NDB XU  
 in climbing 4000ft  
 passing NDB XU turn left to NDB LA



THR 490933.73N 0160813.58E  
 ELEV 1496  
 DISTANCE IN NM FROM THR RWY 30

change: chart revision - obstacles

OCA/OCH		A	B	C	D			
Straight-in Approach	Cat 1	1725 / 230	1736 / 240	1745 / 249	1755 / 259			
	GP INOP	1840 / 344						
Circling NORTH OF AD ONLY		1936 R/-	1988 R/-	2086 R/-	2185 R/-			
DME LA	NM	6,0	5,0	4,0	3,0	2,0	1,0	0,8
ALTITUDES	ft	3406	3088	2769	2451	2133	1815	1752

kt	81	100	122	141	162	184	
km/h	150	185	225	260	300	340	
time FAF - MAPt 6,9 NM	min:sec	5:05	4:07	3:23	2:56	2:32	2:14
Rate of descent	m / s	2,2	2,7	3,3	3,8	4,4	5,0
	ft / min	433	532	650	748	866	994

Seznam traťových bodů / Way point list		
LA (NDB)	49 08 12 N	016 10 47 E
L (L)	49 09 02 N	016 09 13 E
NA30A	49 04 16 N	016 22 23 E
NA30C	49 05 24 N	016 23 14 E
NA30I	49 02 52 N	016 20 55 E
NA30F	49 04 44 N	016 17 31 E
XU (NDB)	49 11 50 N	016 04 00 E