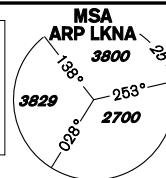


# INSTRUMENT APPROACH CHART - ICAO

**AERODROME ELEV 1547**  
**THR RWY 12 ELEV 1547**  
**THR RWY 30 ELEV 1496**  
**OCH RELATED TO THR RWY 12**

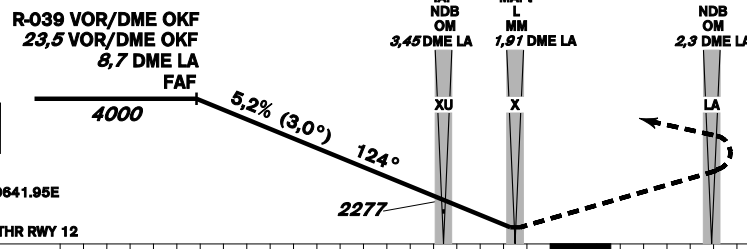
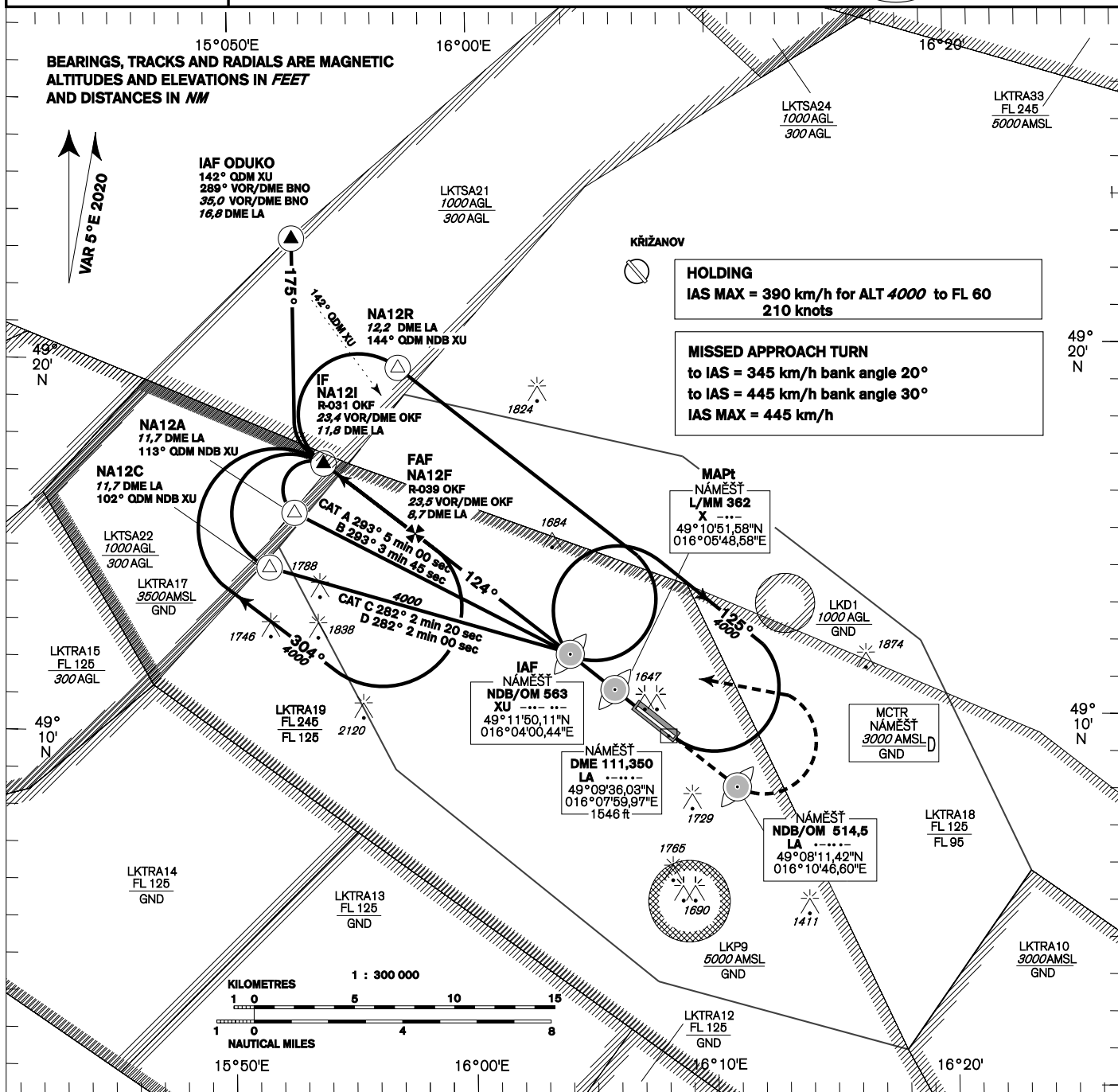
**NÁMEŠŤ APPROACH/ 118,155 266,200 reserve**  
**RADAR**  
**PRECISION 283,900 123,300 reserve**  
**TOWER 126,505 119,830 reserve**



# NÁMEŠŤ NDB RWY 12

BEARINGS, TRACKS AND RADIALS ARE MAGNETIC  
 ALTITUDES AND ELEVATIONS IN FEET  
 AND DISTANCES IN NM

VAR 5° E 2020



**MISSED APPROACH:**  
 Proceed to NDB LA  
 in climbing 4000ft  
 passing NDB turn left to NDB XU

In the case of RCF on final approach track  
 without landing clearance  
 follow the missed approach procedure

change: chart revision - obstacles

OCA/OCH		A	B	C	D
Straight-in Approach	NDB ft		1857 / 308		
	PAR ft		1857 / 308		
Circling (NORTH ONLY)	ft	1936	1988	2086	2185

	81	100	122	141	162	184
kt	81	100	122	141	162	184
km/h	150	185	225	260	300	340
min:sec	5:05	4:07	3:23	2:56	2:32	2:14
m/s	2,2	2,7	3,3	3,8	4,4	5,0
ft/min	433	532	650	748	866	984

Timing is not authorized for defining the MAPt.

Seznam traťových bodů / Way point list		
XU (NDB)	49 11 50 N	016 04 00 E
X (L)	49 10 52 N	016 05 49 E
NA12A	49 15 44 N	015 52 45 E
NA12C	49 14 16 N	015 51 42 E
NA12R	49 19 36 N	015 57 04 E
NA12I	49 17 03 N	015 53 58 E
NA12F	49 15 08 N	015 57 42 E
LA (NDB)	49 08 12 N	016 10 47 E