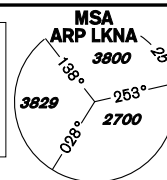


INSTRUMENT APPROACH CHART - ICAO

AERODROME ELEV 1547
THR RWY 12 ELEV 1547
THR RWY 30 ELEV 1496
OCH RELATED TO THR RWY 30

NÁMEŠŤ APPROACH/ 118,155 266,200 reserve
RADAR
PRECISION 283,900 123,300 reserve
TOWER 126,505 119,830 reserve

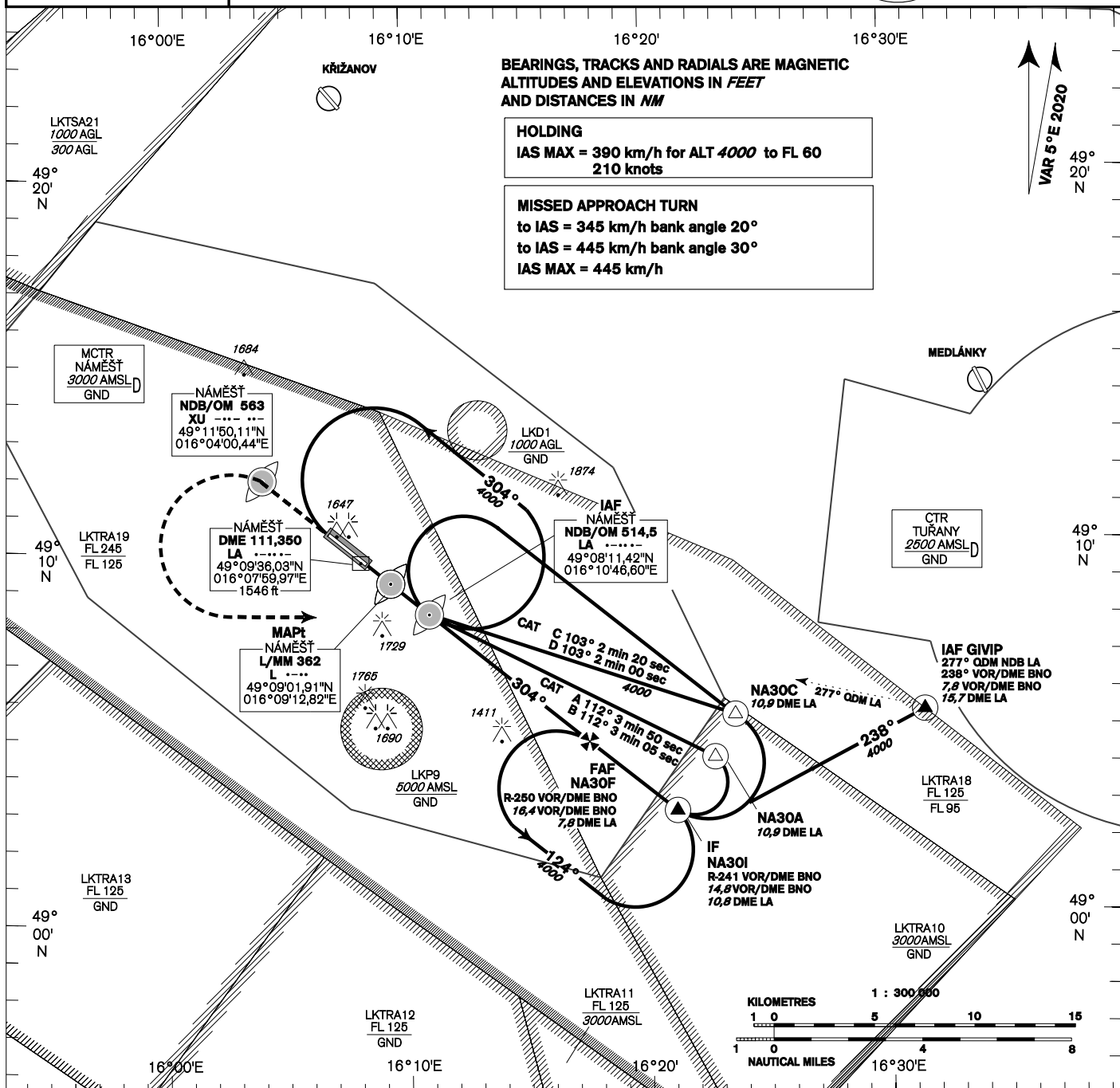
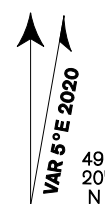


NÁMEŠŤ NDB RWY 30

BEARINGS, TRACKS AND RADIALS ARE MAGNETIC
ALTITUDES AND ELEVATIONS IN FEET
AND DISTANCES IN NM

HOLDING
IAS MAX = 390 km/h for ALT 4000 to FL 60
210 knots

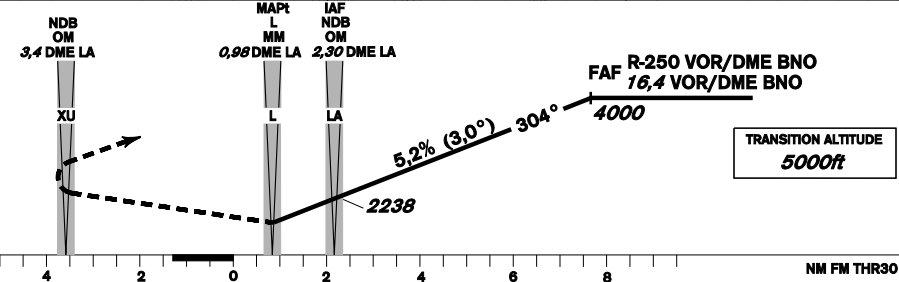
MISSED APPROACH TURN
to IAS = 345 km/h bank angle 20°
to IAS = 445 km/h bank angle 30°
IAS MAX = 445 km/h



MISSED APPROACH:
 Proceed to NDB XU
 in climbing 4000ft
 passing NDB XU turn left to NDB LA

In the case of RCF on final approach track
 without landing clearance
 follow the missed approach procedure

THR 490933.73N 0160813.58E
 ELEV 1496
 DISTANCE IN NM FROM THR RWY 30



OCA/OCH	A	B	C	D
Straight-in Approach	1873	377		
Circling (NORTH ONLY)	1936	1988	2086	2185

kt	81	100	122	141	162	184
km/h	150	185	225	260	300	340
min:sec	5:05	4:07	3:23	2:56	2:32	2:14
m / s	2,2	2,7	3,3	3,8	4,4	5,0
ft / min	433	532	650	748	866	984

Timing is not authorized for defining the MAPt.

change: chart revision - obstacles

Seznam traťových bodů / Way point list		
LA (NDB)	49 08 12 N	016 10 47 E
L (L)	49 09 02 N	016 09 13 E
NA30A	49 04 16 N	016 22 23 E
NA30C	49 05 24 N	016 23 14 E
NA30I	49 02 52 N	016 20 55 E
NA30F	49 04 44 N	016 17 31 E
XU (NDB)	49 11 50 N	016 04 00 E