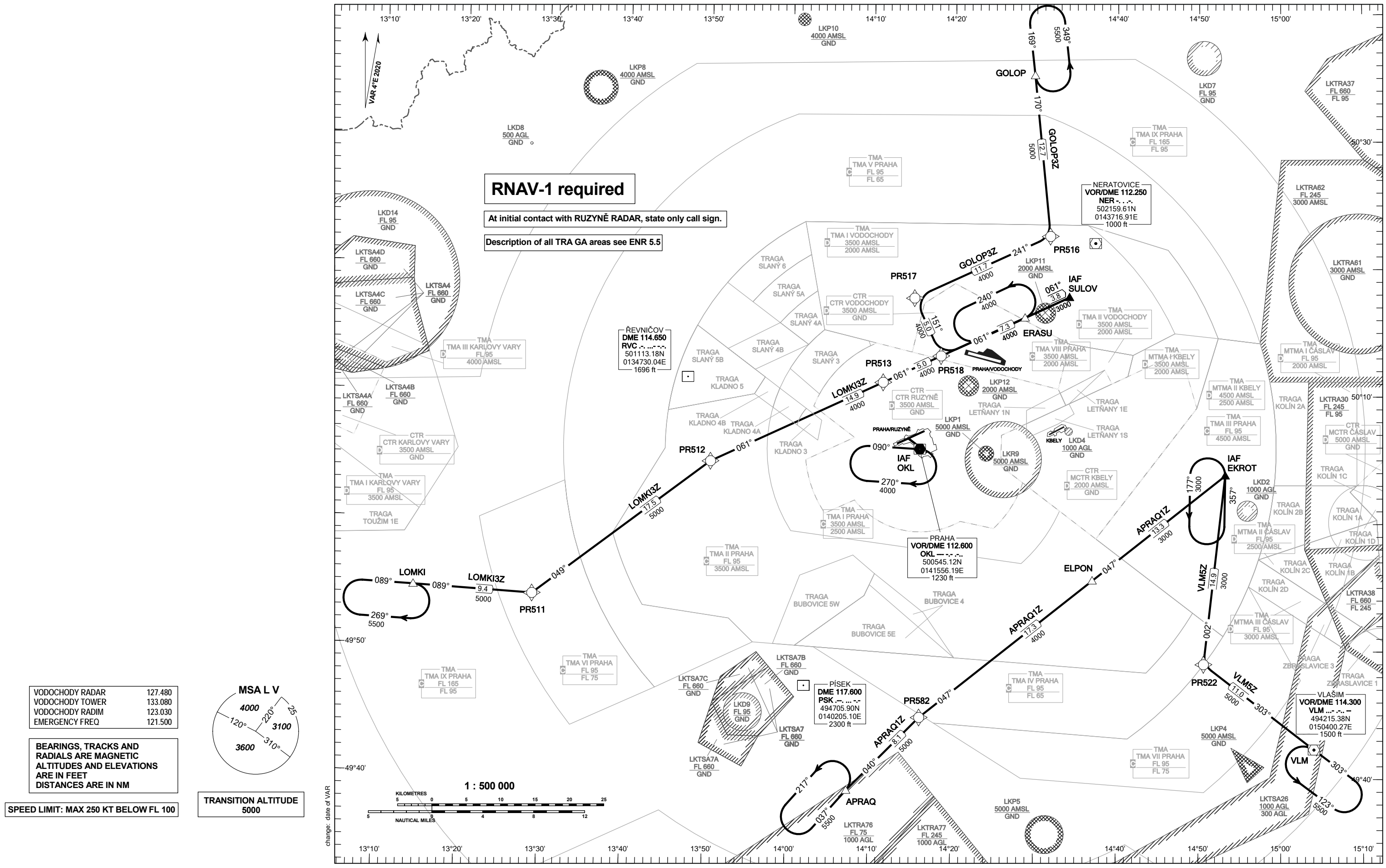


**STANDARD ARRIVAL CHART - INSTRUMENT  
(STAR) - ICAO**

**PRAHA/VODOCHODY  
RNAV STAR RWY 10-28**



**RNAV-1 required**

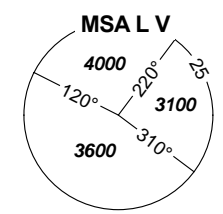
At initial contact with RUZYŇ RADAR, state only call sign.

Description of all TRA GA areas see ENR 5.5

VODOCHODY RADAR	127.480
VODOCHODY TOWER	133.080
VODOCHODY RADIM	123.030
EMERGENCY FREQ	121.500

BEARINGS, TRACKS AND  
RADIALS ARE MAGNETIC  
ALTITUDES AND ELEVATIONS  
ARE IN FEET  
DISTANCES ARE IN NM

SPEED LIMIT: MAX 250 KT BELOW FL 100



TRANSITION ALTITUDE  
5000

