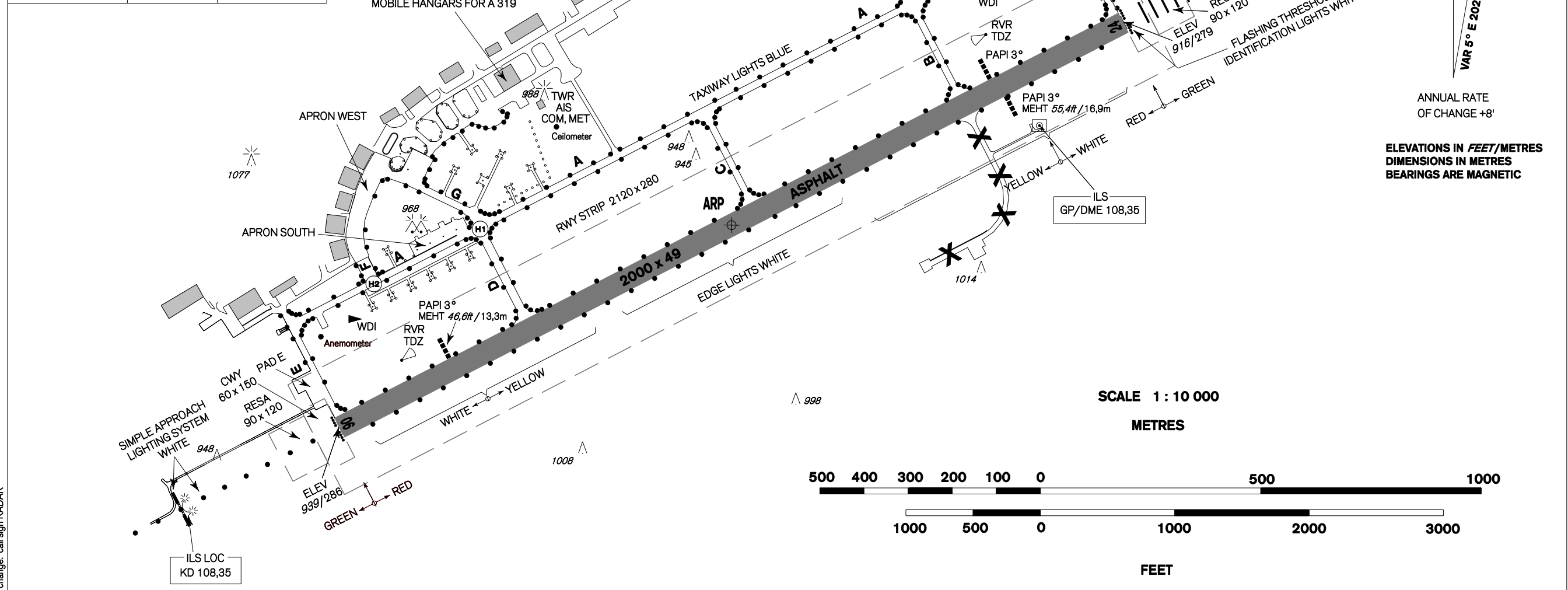
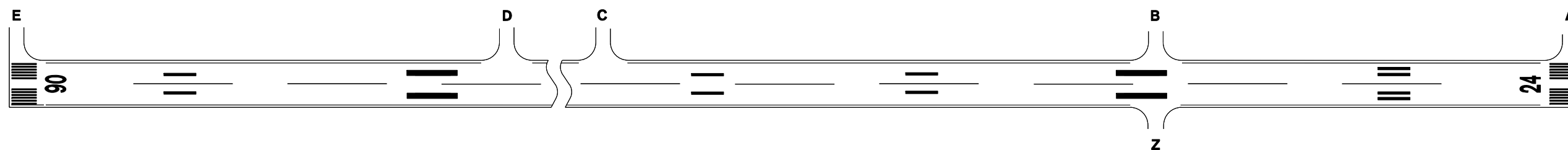


ARP	50°07'17"N 014°32'37"E	ELEV 939 ft / 286 m	RADAR	124,680 291,050 reserve	PRECISION	126,760 123,300 reserve 315,000 reserve	TOWER	120,880 134,730 reserve	GROUND	- -	AERODROME CHART - ICAO KBELY
------------	---	--------------------------------------	--------------	--	------------------	--	--------------	--	---------------	--------	-------------------------------------

RWY	DIRECTION	THR	BEARING STRENGTH
24	237°	50°07'31,93"N 014°33'21,70"E	PCN 48/F/B/W/T
06	057°	50°07'01,90"N 014°31'52,51"E	
TAXIWAYS	TWY A TWY B TWY C TWY D TWY E TWY F TWY G TWY J	PCN 60/R/A/W/T PCN 60/R/A/W/T PCN 60/R/A/W/T PCN 44/F/B/W/T PCN 37/F/C/W/T PCN 44/F/B/W/T PCN 29/F/C/W/T PCN 27/R/C/W/T	
APRON	EAST MIDDLE WEST SOUTH	PCN 21/R/C/W/T PCN 25/R/C/W/T PCN 44/F/B/W/T PCN 21/R/B/W/T	
PADS	PAD E PAD A	PCN 16/R/B/W/T PCN 17/R/C/W/T	



MARKINGS ON MANOEUVRING AREA



change: call sign RADAR