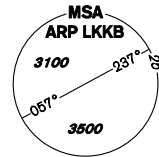


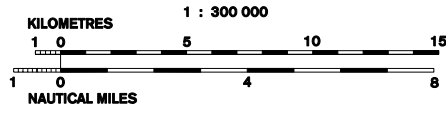
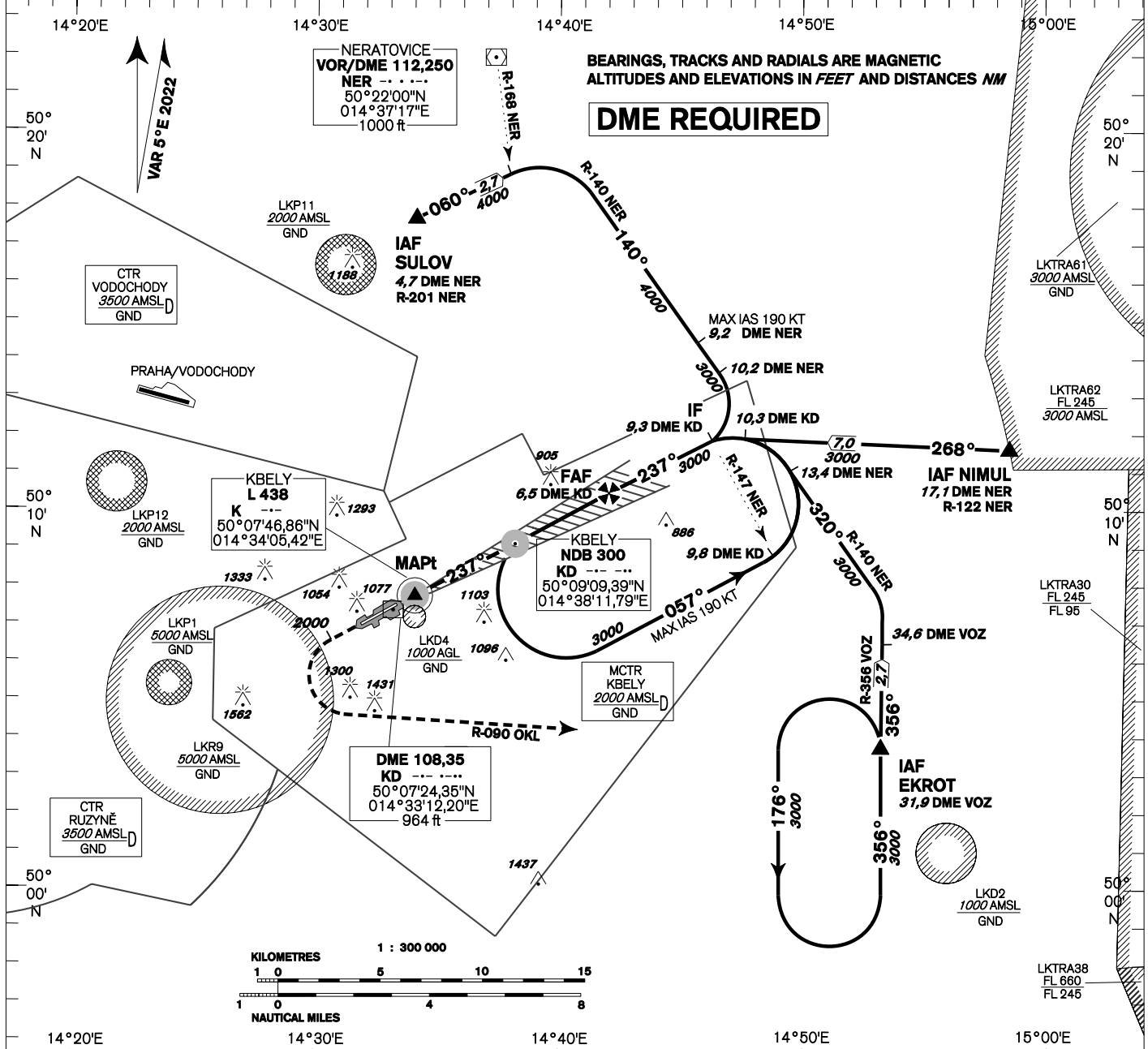
INSTRUMENT APPROACH CHART - ICAO

AERODROME ELEV **939**
THR RWY 06 ELEV **939**
THR RWY 24 ELEV **916**
ARP **919**
OCH RELATED TO THR RWY 24

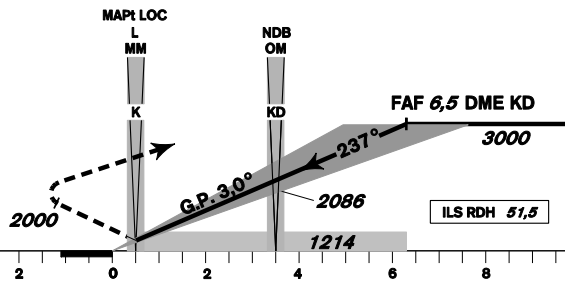
KBELY RADAR 124,680 291,050 reserve
KBELY PRECISION 126,760 123,300 reserve
315,000 reserve
KBELY TOWER 120,880 134,730 reserve



**KBELY
ILS
RWY 24**



MISSED APPROACH:
Climb to **2000ft** MAX 2,7NM
KD DME/MNM 8,7NM OKL DME,
turn left intercept radial R 090 OKL
then climb to **3000ft** continue to EKROT



TRANSITION ALTITUDE
5000ft

MISSED APPROACH:
to IAS \geq 185 kt min. bank angle 15°
to IAS \geq 230 kt min. bank angle 20°
IAS MAX = 230 KT

THR 500731.93N, 0143321.70E
ELEV 916

changes: call sign RADAR

DME KD	NM	6,5	5,0	4,0	3,0	2,0	1,0	0,5
ALTITUDES	ft	3000	2500	2241	1912	1607	1286	1115

OCA/OCH		A	B	C	D
Straight-in Approach	Cat I	ft 1115 / 197	1119 / 200	1128 / 210	1138 / 220
	LOC	ft 1214 / 296			
Circling (South only)		ft 1345 L/-	1656 L/-	1971 L/-	-

	kt	60	90	120	150	180
FAF - MAPt 5,8 NM	min:sec	5:49	3:53	2:55	2:20	1:57
Rate of descent	ft/min	315	470	640	790	960

Timing is not authorized for defining the MAPt.