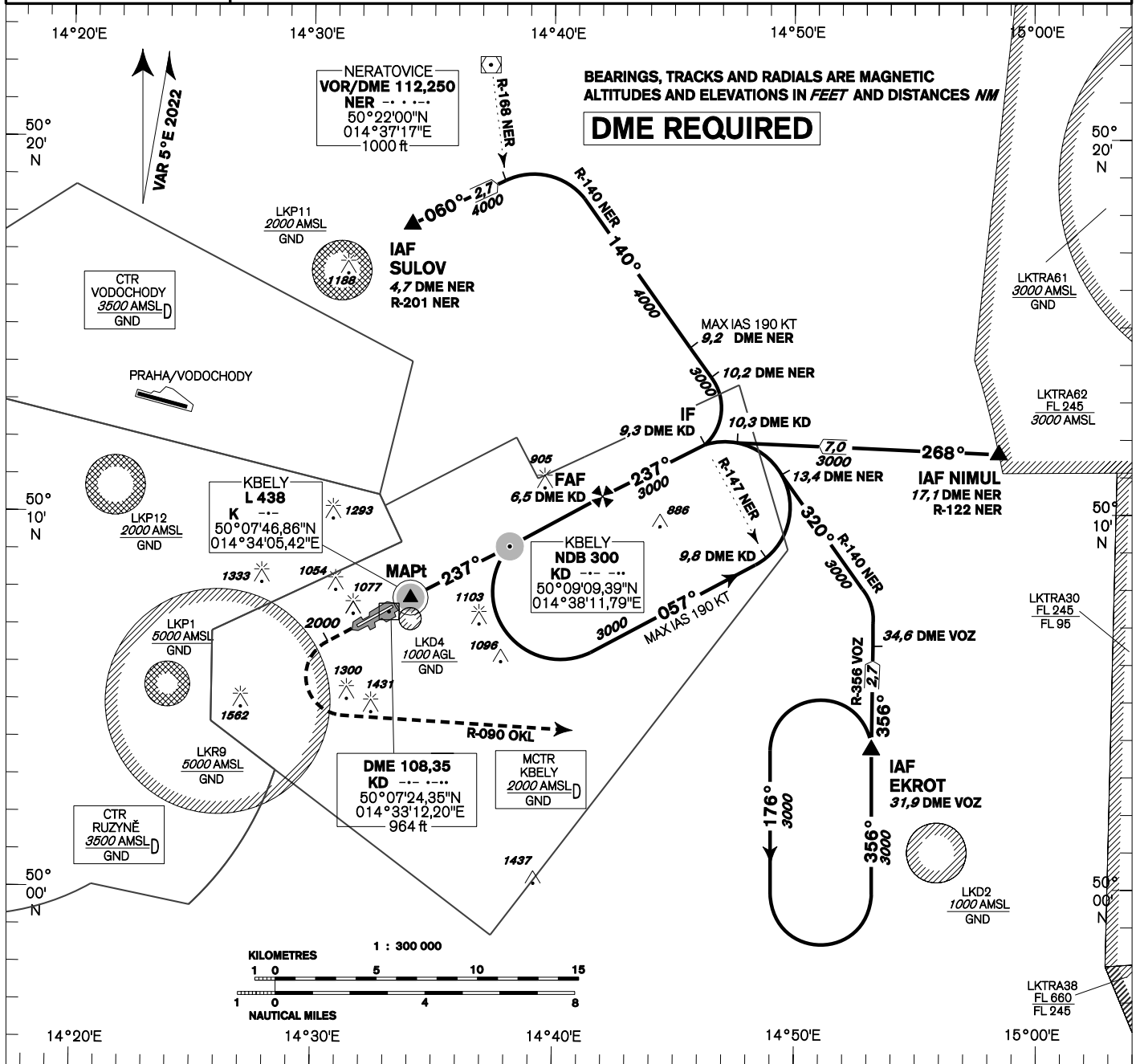


<b>INSTRUMENT APPROACH CHART - ICAO</b>	<b>AERODROME ELEV 939</b>	<b>KBELY RADAR 124,680 291,050 reserve</b>
	<b>THR RWY 06 ELEV 939</b>	<b>KBELY PRECISION 126,760 123,300 reserve</b>
	<b>THR RWY 24 ELEV 916</b>	<b>KBELY TOWER 120,880 134,730 reserve</b>
	<b>ARP 919</b>	
<b>OCH RELATED TO THR RWY 24</b>		
<b>KBELY NDB RWY 24</b>		



**MISSED APPROACH:**  
Climb to 2000ft MAX 2,7NM  
KD DME/MNM 8,7NM OKL DME,  
turn left intercept radial R 090 OKL  
then climb to 3000ft continue to EKROT

THR 500731.93N, 0143321.70E  
ELEV 916

**TRANSITION ALTITUDE  
5000ft**

**MISSED APPROACH:**  
to IAS ≤ 185 kt min. bank angle 15°  
to IAS ≤ 230 kt min. bank angle 20°  
IAS MAX = 230 KT

change: call sign RADAR

<b>OCA/OCH</b>	<b>A</b>	<b>B</b>	<b>C</b>	<b>D</b>	<b>DME KD NM</b>	<b>6,5</b>	<b>5,0</b>	<b>4,0</b>	<b>3,0</b>	<b>2,0</b>	<b>1,0</b>	<b>0,5</b>		
Straight - in Approach NDB	ft	1214/296				<b>ALTITUDES</b>	ft	3000	2500	2241	1912	1607	1286	1115
Straight - in Approach PAR	ft	1155/239												
Circling (South only)	ft	1345	1656	1971	-									

	<b>kt</b>	<b>60</b>	<b>90</b>	<b>120</b>	<b>150</b>	<b>180</b>
<b>FAF - MAPt 5,8 NM</b>	<b>min:sec</b>	5:49	3:53	2:55	2:20	1:57
<b>Rate of descent</b>	<b>ft/min</b>	315	470	640	790	960

Timing is not authorized for defining the MAPt.