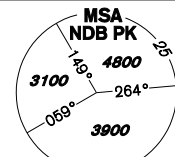
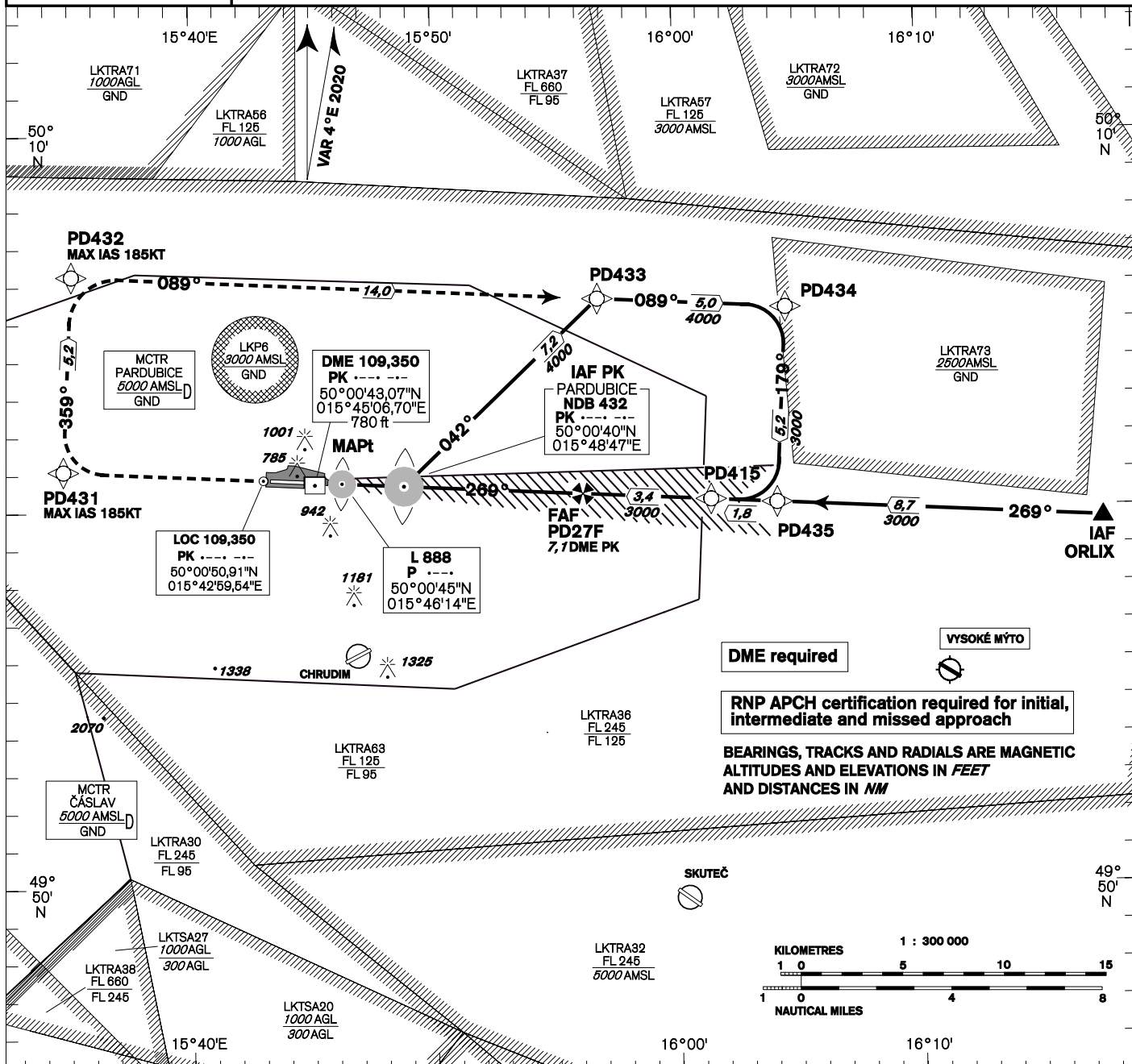


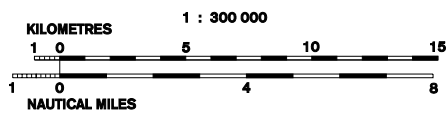
<b>INSTRUMENT APPROACH CHART - ICAO</b>	<b>AERODROME ELEV 741</b> <b>THR RWY 27 ELEV 731</b> <b>OCH RELATED TO THR RWY 27</b>	<b>PARDUBICE</b> <b>RADAR 128,365 267,300 O/R</b> <b>PRECISION 296,825 123,300 reserve</b> <b>TOWER 120,155 120,205 reserve</b>		<b>PARDUBICE</b> <b>ILS Y</b> <b>RWY 27</b>
---	---	--	---	---



**DME required**

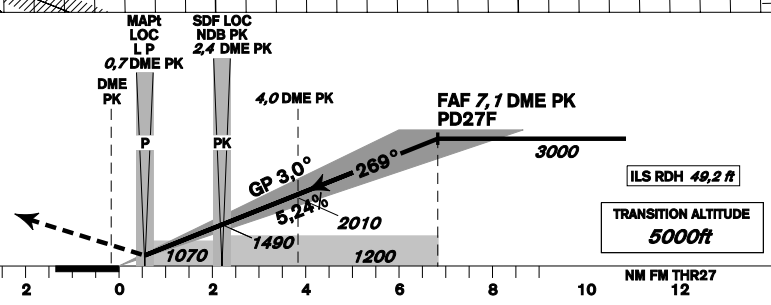
**RNP APCH certification required for initial, intermediate and missed approach**

**BEARINGS, TRACKS AND RADIALS ARE MAGNETIC ALTITUDES AND ELEVATIONS IN FEET AND DISTANCES IN NM**



**MISSED APPROACH:**  
 Climb straight ahead to PD431, turn right to PD432, turn right to PD433 and join initial approach via PD434. Climb to 4000ft.

THR 500046.50N, 0154521.56E  
 ELEV 731



OCA/OCH		A	B	C	D
Straight-in Approach	ft	889 / 168	912 / 181	920 / 189	930 / 199
LOC only	ft	1070 / 340			
Circling South of AD Only	ft	1240 / 510	1430 / 700	1580 / 850	1730 / 1010

DME PK NM	7	6	5	4	3	2	1
ALTITUDES ft	2960	2640	2330	2010	1690	1370	1050
FAF - MAPt 6,4 NM	kt	80	100	120	140	160	180
Rate of descent	min:sec	4:46	3:46	3:12	2:45	2:24	2:08
	ft/min	430	540	650	750	860	970

Timing is not authorized for defining the MAPt.

change: call sign PARDUBICE RADAR

Seznam traťových bodů / Way point list		
PD431	50 01 06,03 N	015 34 45,03 E
PD432	50 06 16,69 N	015 35 07,22 E
PD433	50 05 36,10 N	015 56 49,25 E
PD434	50 05 20,62 N	016 04 34,47 E
PD435	50 00 09,87 N	016 04 09,11 E
PD27F	50 00 25,78 N	015 56 09,06 E