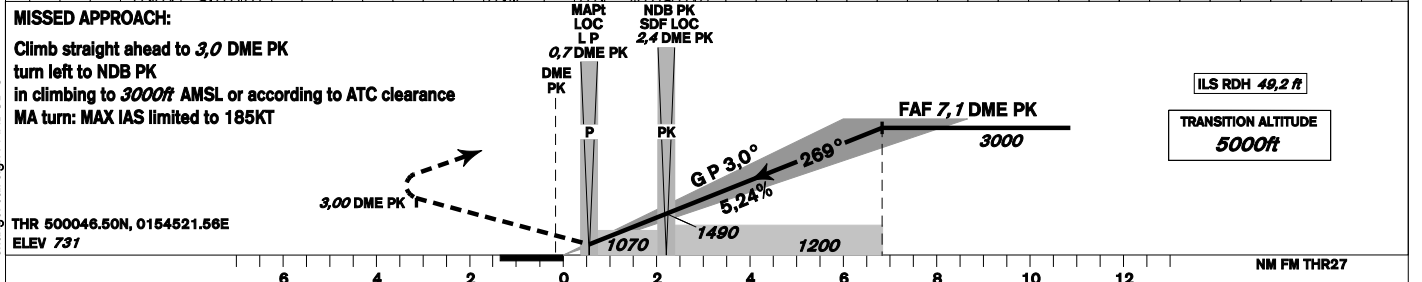
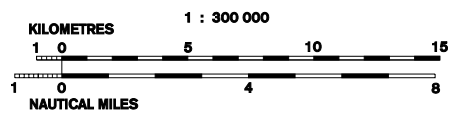
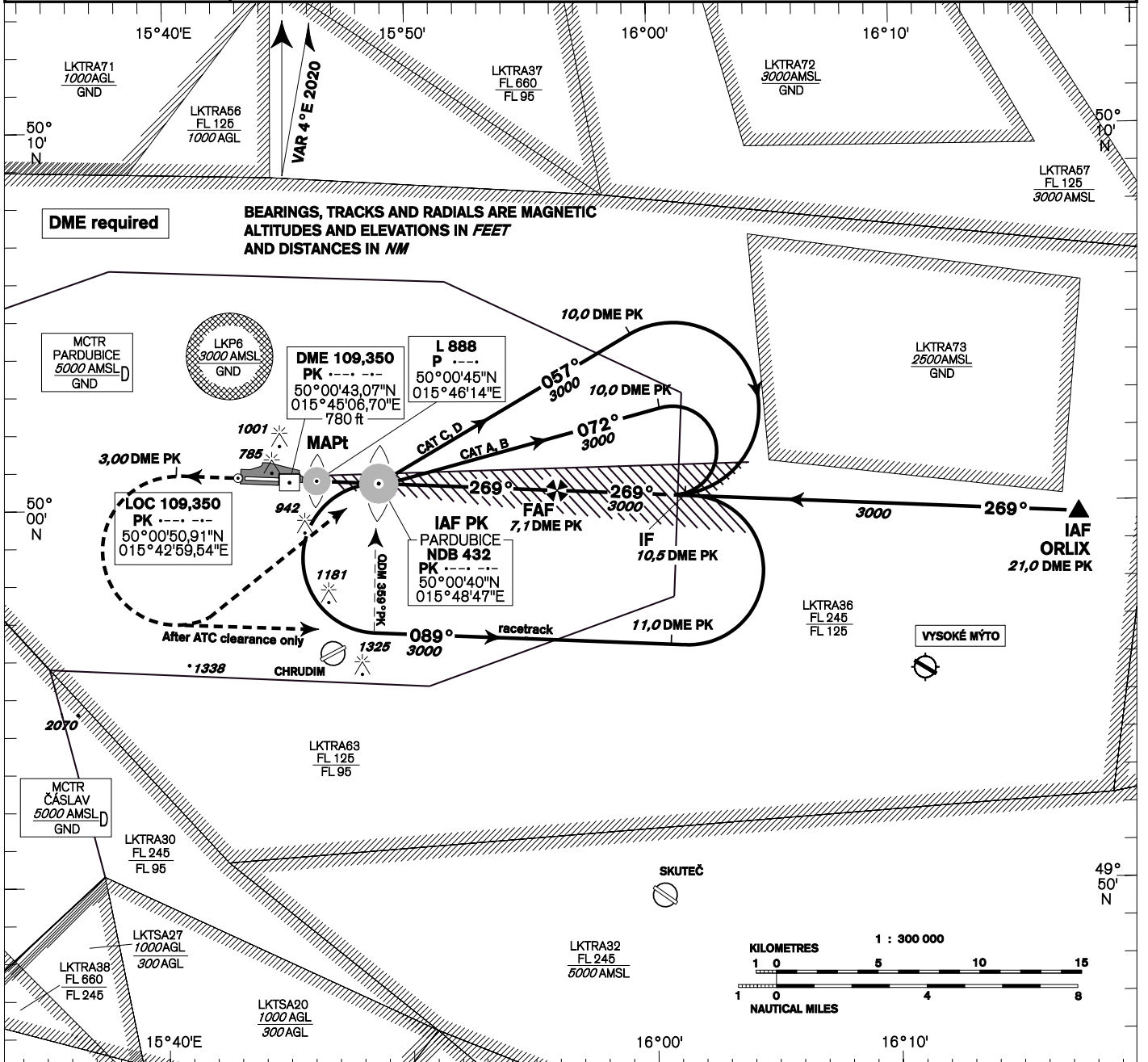
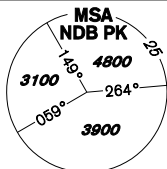


<b>INSTRUMENT APPROACH CHART - ICAO</b>	<b>AERODROME ELEV 741</b> <b>THR RWY 27 ELEV 731</b> <b>OCH RELATED TO THR RWY 27</b>	<b>PARDUBICE</b> <b>RADAR 128,365 267,300 O/R</b> <b>PRECISION 296,825 123,300 reserve</b> <b>TOWER 120,155 120,205 reserve</b>	<b>PARDUBICE ILS Z</b> <b>RWY 27</b>
---	---	--	---



OCA/OCH		A	B	C	D
Straight-in Approach	ft	899 / 168	912 / 181	920 / 189	930 / 199
LOC only	ft	1070 / 340			
Circling South of AD Only	ft	1240 / 510	1430 / 700	1580 / 850	1730 / 1010

DME PK NM	7	6	5	4	3	2	1
ALTITUDES ft	2960	2640	2330	2010	1690	1370	1050
	kt	80	100	120	140	160	180
FAF - MAPt 6,4 NM	min:sec	4:46	3:46	3:12	2:45	2:24	2:08
Rate of descent	ft/min	430	540	650	750	860	970

Timing is not authorized for defining the MAPt.