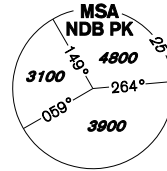


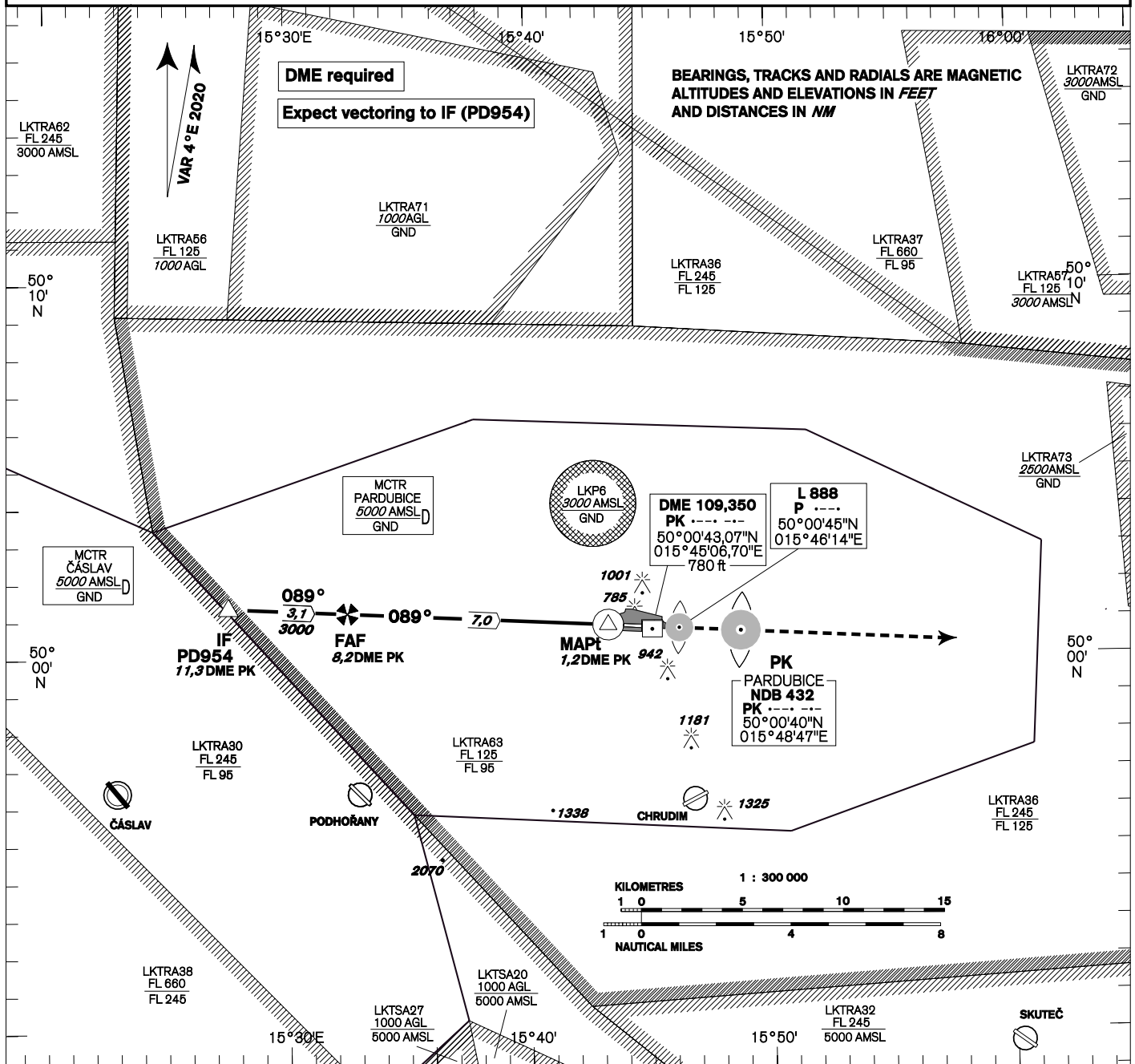
INSTRUMENT APPROACH CHART - ICAO

AERODROME ELEV 741
THR RWY 09 ELEV 736
OCH RELATED TO THR RWY 09

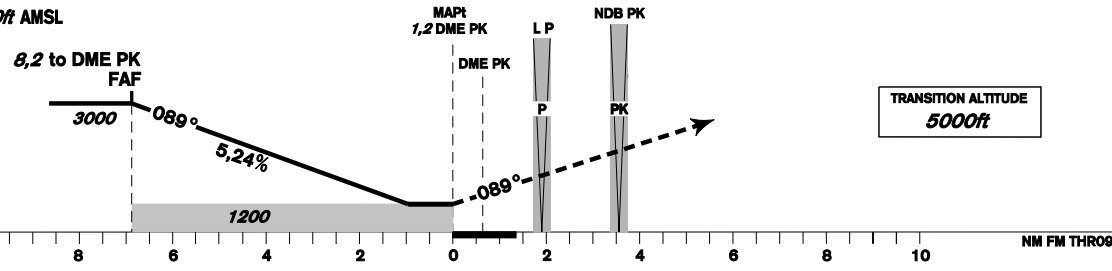
PARDUBICE	
RADAR	128,365 267,300 O/R
PRECISION	296,825 123,300 reserve
TOWER	120,155 120,205 reserve



PARDUBICE NDB RWY 09



MISSED APPROACH:
Climb straight ahead to 3000ft AMSL and expect vectoring



THR 500050.39N, 0154316.14E
ELEV 736

OCA/OCH	A	B	C	D
Straight-in Approach	1200 / 460			
Circling (south of AD only)	1240 / 510	1430 / 700	1580 / 850	1730 / 1010

DIST TO DME PK NM	8	7	6	5	4	3	2
ALTITUDES ft	2950	2640	2320	2000	1680	1360	1040
	kt	80	100	120	140	160	180
FAF - MAPt 7,0	min:sec	5:14	4:11	3:29	3:00	2:37	2:20
Rate of descent	ft/min	420	530	640	740	850	950

Timing is not authorized for defining the MAPt.

Seznam traťových bodů / Way point list		
PD954	50 01 18,17 N	015 27 41,98 E
PD09F	50 01 09,83 N	015 32 30,04 E