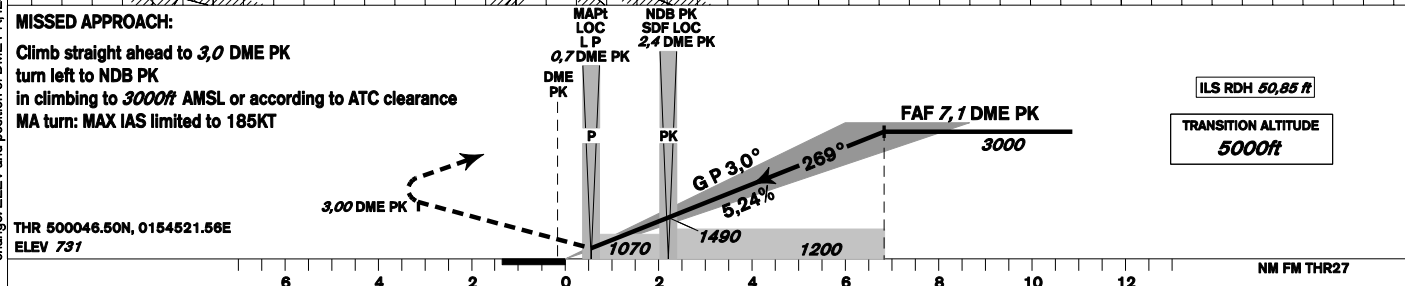
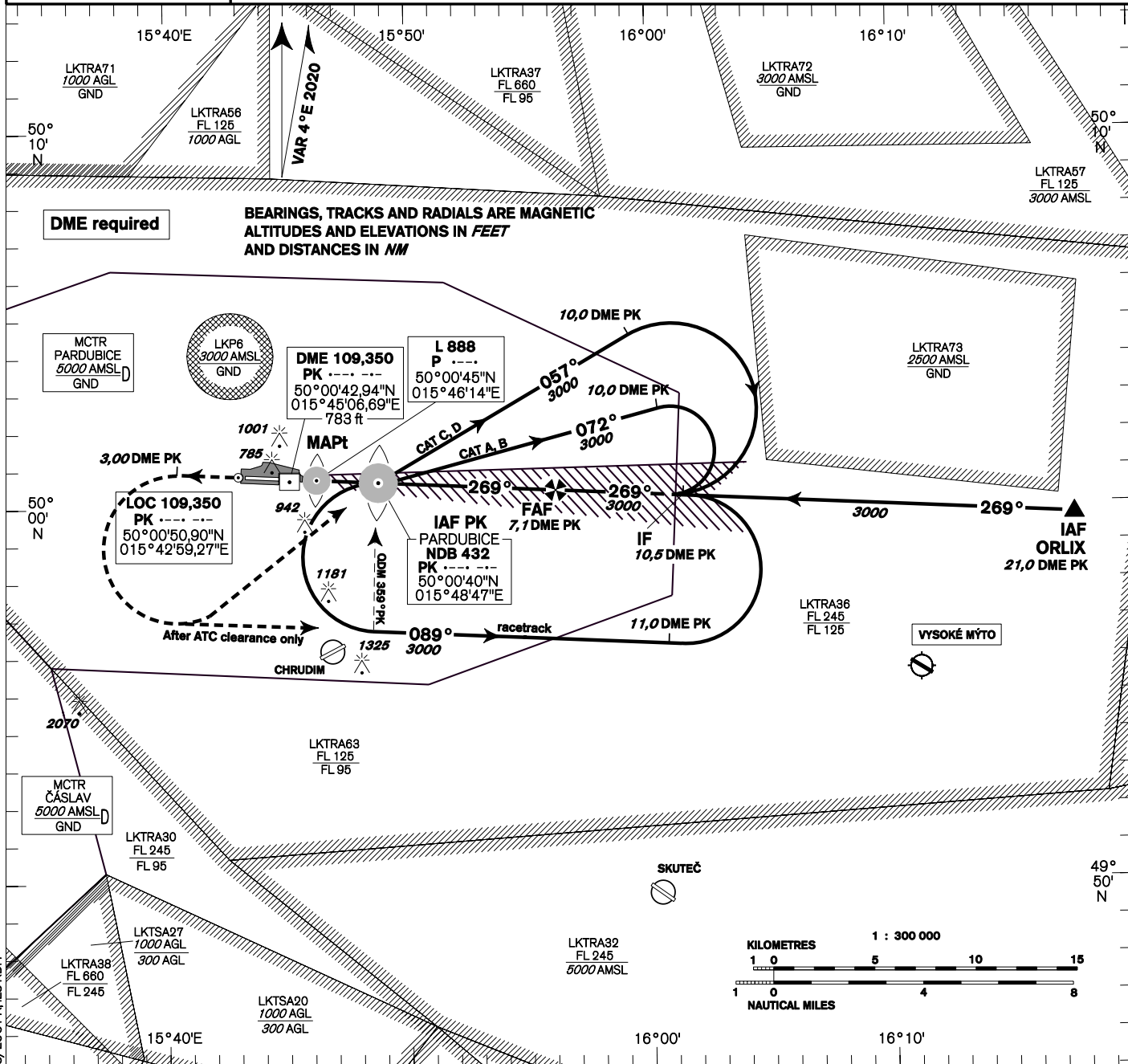


INSTRUMENT APPROACH CHART - ICAO	AERODROME ELEV 741 THR RWY 27 ELEV 731 OCH RELATED TO THR RWY 27	PARDUBICE RADAR 128,365 267,300 O/R PRECISION 296,825 123,300 reserve TOWER 120,155 120,205 reserve		PARDUBICE ILS Z RWY 27
---	---	--	--	---------------------------------------



OCA/OCH		A	B	C	D
Straight-in Approach	ft	899 / 168	912 / 181	920 / 189	930 / 199
LOC only	ft	1070 / 340			
Circling South of AD Only	ft	1240 / 510	1430 / 700	1580 / 850	1730 / 1010

DME PK NM	7	6	5	4	3	2	1
ALTITUDES ft	2960	2640	2330	2010	1690	1370	1050

kt	80	100	120	140	160	180
FAF - MAPt 6,4 NM min:sec	4:46	3:46	3:12	2:45	2:24	2:08
Rate of descent ft/min	430	540	650	750	860	970

Timing is not authorized for defining the MAPt.