

ARP 49°09'58,35"N AD ELEV 1547 ft | 471,5 m  
016°07'27,78"E

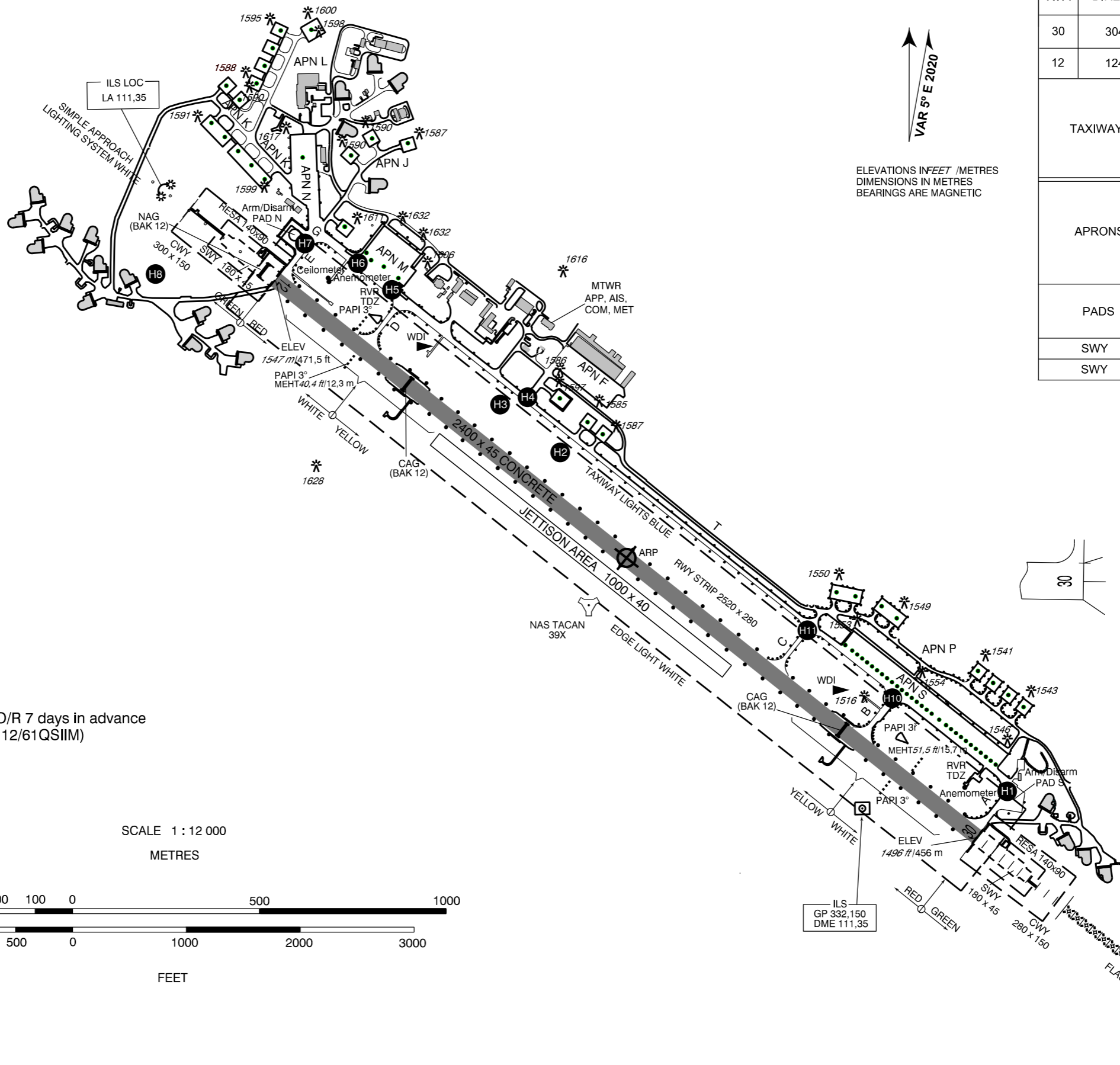
RADAR 118,155  
266,200 reserve

PRECISION 283,900  
123,300 reserve

TOWER 126,505  
121,180 reserve

GROUND -  
-

# AERODROME CHART - ICAO NÁMEŠŤ

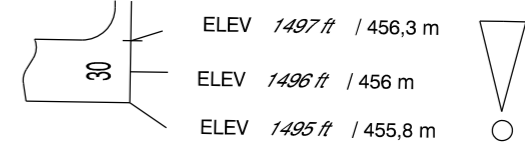
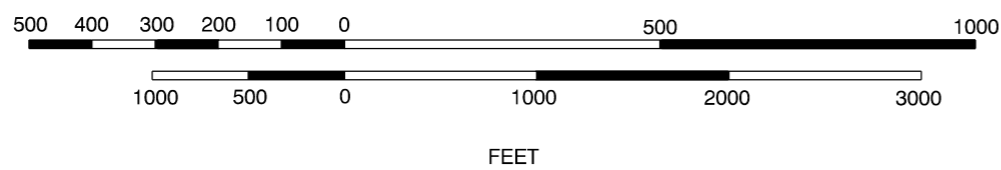


VAR 5° E 2020  
ELEVATIONS IN FEET / METRES  
DIMENSIONS IN METRES  
BEARINGS ARE MAGNETIC

| RWY      | DIRECTION | THR  | BEARING STRENGTH   |
|----------|-----------|--|--|
| 30       | 304°      | 49°09'33,73"N<br>016°08'13,58"E                                      | PCN 29/R/B/W/T   |
| 12       | 124°      | 49°10'22,96"N<br>016°06'41,95"E                                      |  |
| TAXIWAYS |           | TWY A<br>TWY B<br>TWY C<br>TWY D<br>TWY E<br>TWY G<br>TWY T          | PCN 25/R/B/W/T<br>PCN 27/R/B/W/T<br>PCN 25/R/B/W/T<br>PCN 23/R/B/W/T<br>PCN 26/R/B/W/T<br>PCN 22/R/C/W/T<br>PCN 24/R/B/W/T |
| APRONS   |           | APN M<br>APN S<br>APN N<br>APN F<br>APN J<br>APN K<br>APN L<br>APN P | PCN 41/R/A/W/T<br>PCN 41/R/B/W/T<br>PCN 25/R/B/W/T<br>PCN 35/R/A/W/T<br>13000 kg / 0,8 MPa                                 |
| PADS     |           | Arm/Disarm<br>PAD N<br>Arm/Disarm<br>PAD S                           | PCN 49/R/A/W/T<br>PCN 52/R/A/W/T   |
| SWY      |           | 12   | PCN 15/F/C/X/T   |
| SWY      |           | 30   | PCN 12/F/C/X/T   |

CAG (BAK 12) O/R 7 days in advance  
NAG (P-IV/BAK 12/61QSIIM)

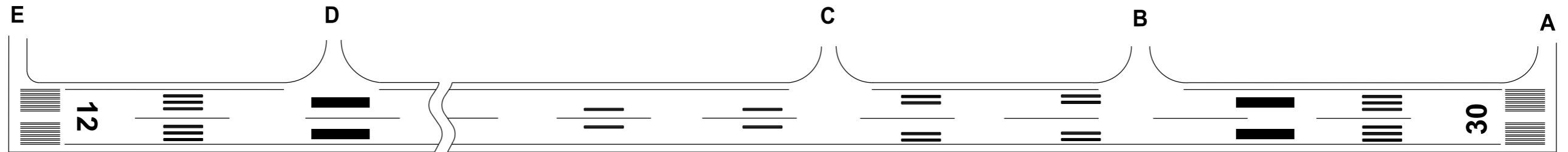
SCALE 1 : 12 000  
METRES



change: chart revision

AERODROME CHART - ICAO - MARKINGS ON MANOEUVRING AREA

NÁMĚŠŤ



change: chart revision