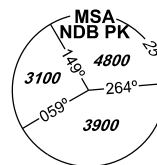


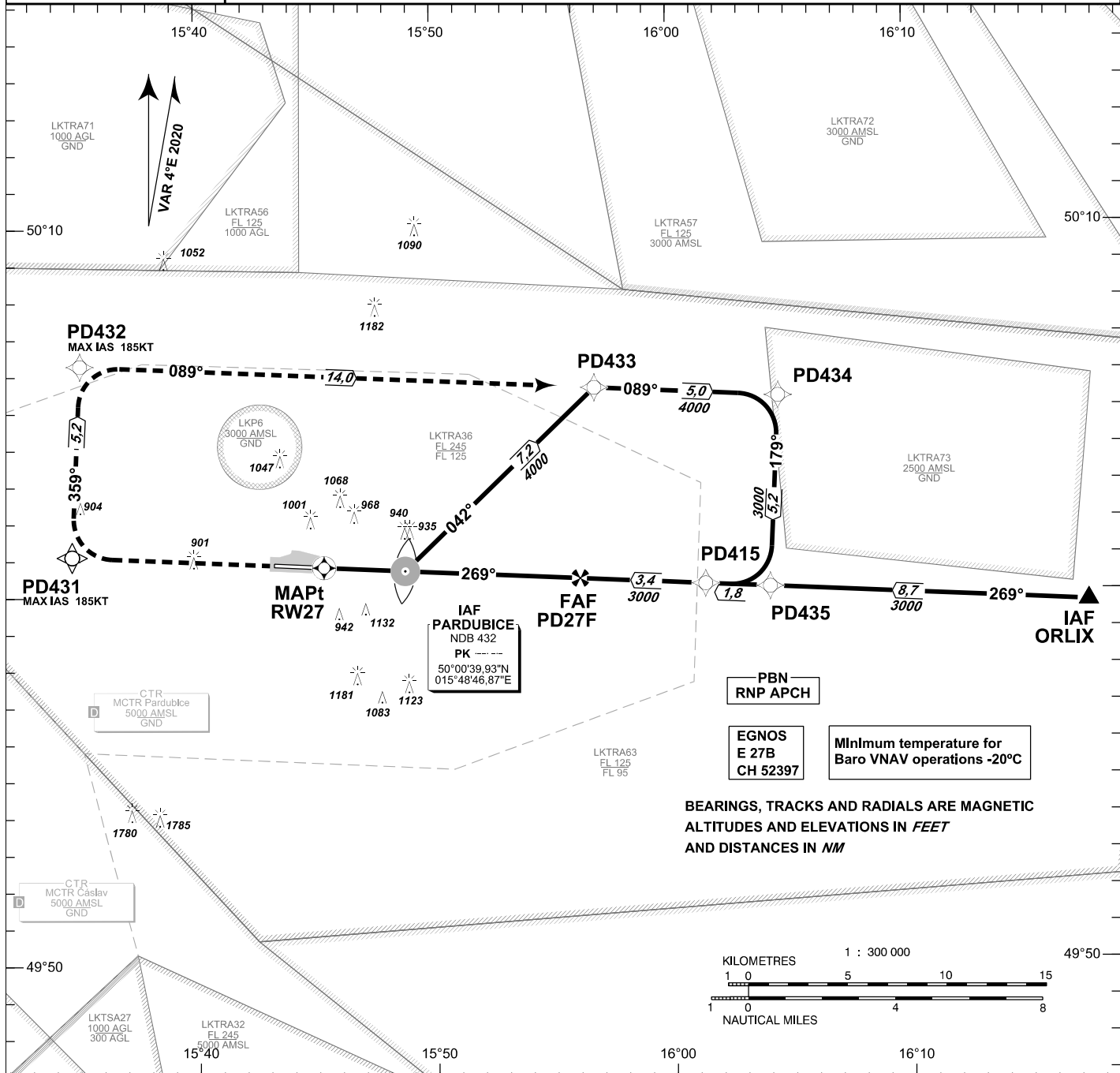
INSTRUMENT APPROACH CHART - ICAO

AERODROME ELEV 741
 THR RWY 27 ELEV 731
 OCH RELATED TO THR RWY 27

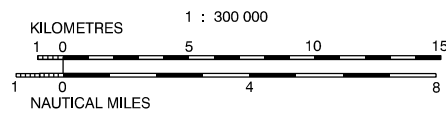
PARDUBICE		
RADAR	128,365	267,300 O/R
PRECISION	296,825 O/R	123,300 reserve
TOWER	120,155	120,205 reserve



PARDUBICE
RNP Y
CAT C, D
RWY 27

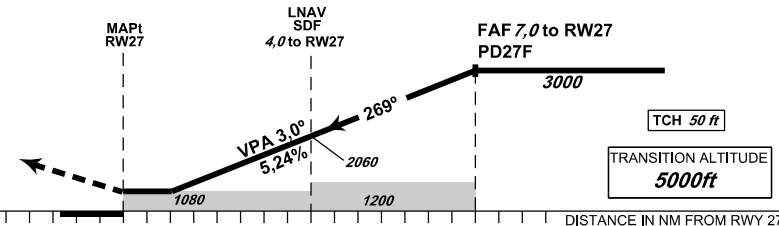


BEARINGS, TRACKS AND RADIALS ARE MAGNETIC
 ALTITUDES AND ELEVATIONS IN FEET
 AND DISTANCES IN NM



MISSED APPROACH:
 Climb straight ahead to PD431, turn right to PD432, turn right to PD433 and join Initial approach via PD434. Climb to 4000ft.
 MA turn: MAX IAS limited to 185 kt

THR 500046.50N, 0154521.56E
 ELEV 731



Straight-in Approach	LNAV	ft	1080 / 350
	LNAV / VNAV	ft	1075 / 345
	LPV	ft	931 / 200
Circling South of AD Only	ft	1580 / 850	1730 / 1010

Dist to THR (RWY27) NM	7	6	5	4	3	2	1
ALTITUDES ft	3000	2690	2370	2060	1740	1420	1100
	kt	80	100	120	140	160	180
FAF - MAPt 7,0 NM	min:sec	5:14	4:11	3:30	3:00	2:37	2:20
Rate of descent	ft/min	430	540	650	750	860	970

change: chart revision

Timing is not authorized for defining the MAPt.

Seznam traťových bodů / Way point list		
PD431	50 01 06,03 N	015 34 45,03 E
PD432	50 06 16,69 N	015 35 07,22 E
PD433	50 05 36,10 N	015 56 49,25 E
PD434	50 05 20,62 N	016 04 34,47 E
PD435	50 00 09,87 N	016 04 09,11 E
PD27F	50 00 25,78 N	015 56 09,06 E

SBAS FAS Data Block

Vstupní data / Input Data

Parametry / Parameters	Hodnoty / Values
Operation Type	0
SBAS Provider	1 (EGNOS)
Airport Identifier	LKPD
Runway	27
Runway Letter	0 (None)
Approach Performance Designator	0
Route Indicator	Y
Reference Path Data Selector	0
Reference Path Identifier	E27B
LTP/FTP Latitude	500046.5000N
LTP/FTP Longitude	0154521.5600E
LTP/FTP Ellipsoidal Height (metres)	267.1
FPAP Latitude	500050.3900N
Delta FPAP Latitude (seconds)	3.8900
FPAP Longitude	0154316.1400E
Delta FPAP Longitude (seconds)	-125.4200
Threshold Crossing Height	50.0
TCH Units Selector	0 (feet)
Glidepath Angle (degrees)	3.00
Course Width (metres)	105.00
Length Offset (metres)	0
HAL (metres)	40.0
VAL (metres)	35.0

Výstupní data / Output Data

Parametry / Parameters	Hodnoty / Values
Data Block	10 04 10 0B 0C 1B C8 00 02 37 32 05 48 95 76 15 30 01 C3 06 6F 1E 64 1E 00 28 2C FC F4 01 2C 01 64 00 C8 AF AD EC B4 5B
Calculated CRC Value	ADECB45B

Required Additional Data (not CRC wrapped)

Parametry / Parameters	Hodnoty / Values
ICAO Code	LK
LTP/FTP Orthometric Height (metres)	222.9

