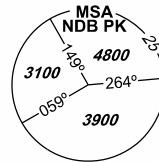
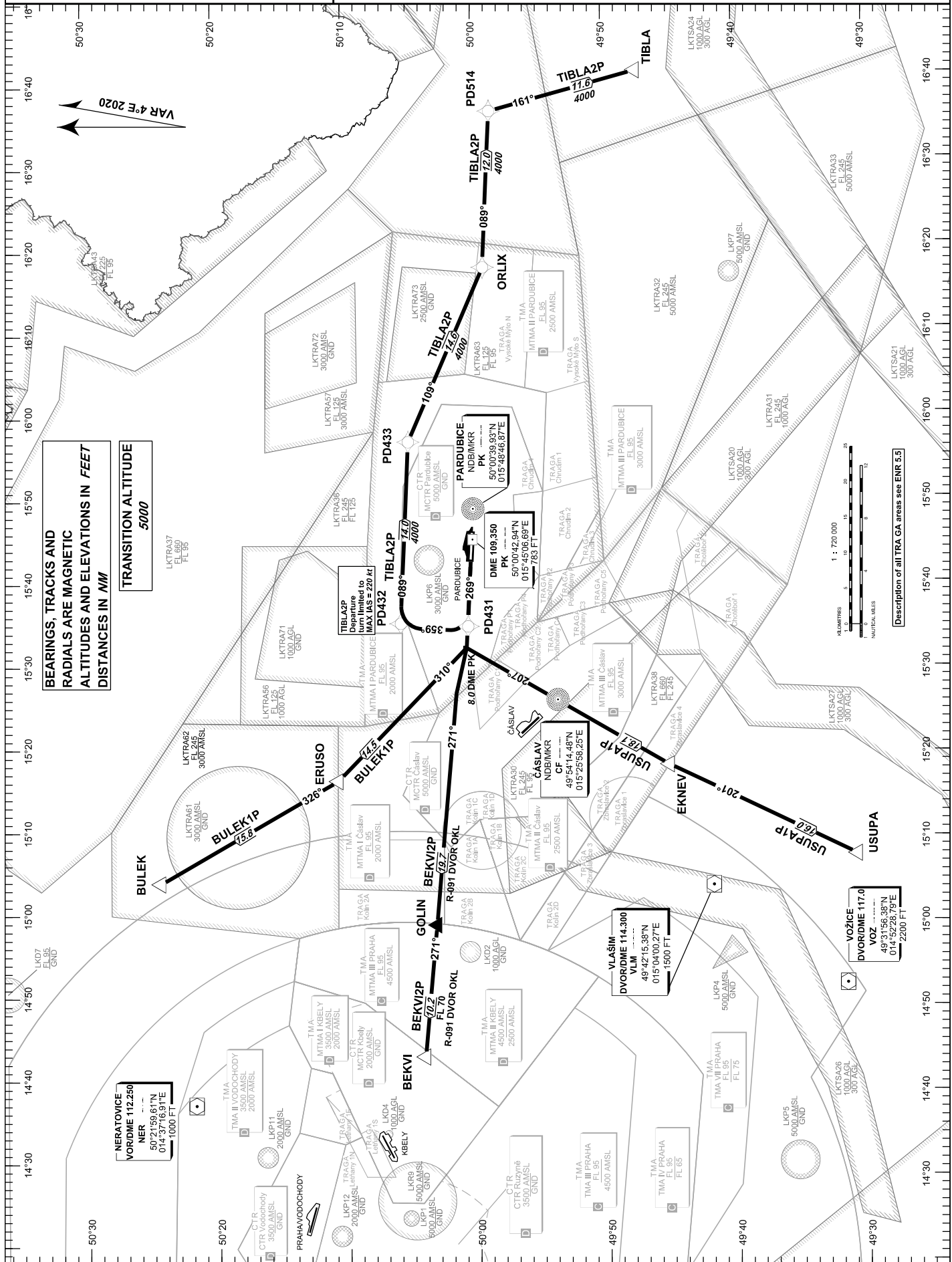


RNAV STANDARD DEPARTURE CHART INSTRUMENT (SID) - ICAO

PARDUBICE	
RADAR	128,365 267,300 O/R
PRECISION	296,825 O/R 123,300 reserve
TOWER	120,155 120,205 reserve

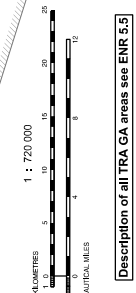


PARDUBICE RWY 27



BEARINGS, TRACKS AND RADIALS ARE MAGNETIC ALTITUDES AND ELEVATIONS IN FEET DISTANCES IN NM

TRANSITION ALTITUDE 5000



NERATOVICE
 VOR/DME 112.250
 NER
 50°21'59.61"N
 014°37'16.91"E
 1000 FT

VLAŠIM
 DVOR/DME 114.300
 VLM
 49°42'15.38"N
 015°04'00.27"E
 500 FT

VOŽICE
 DVOR/DME 117.0
 VOZ
 49°31'56.38"N
 014°52'28.79"E
 2200 FT

change: chart revlsion