

ČESKÁ REPUBLIKA
CZECH REPUBLIC

ŘÍZENÍ LETOVÉHO PROVOZU ČR, s.p.
Středisko AIM
AIR NAVIGATION SERVICES OF THE C.R.
AIM Centre

Navigační 787
252 61 Jeneč

AIP
AIRAC AMDT

11/24

PUBLICATION DATE: 14 NOV 24

+420 220 372 841
+420 220 372 702
aim@ans.cz
https://aim.rlp.cz

1) Datum účinnosti

Tato AIRAC AMDT nabývá účinnosti **0000 UTC** dne **26 DEC 24**. V tento den zařadte do AIP ČR příložené strany.

2) Tato AIP AIRAC AMDT obsahuje:

- BRNO/Tuřany (LKTB) - Změna souřadnic THR RWY 09/27; změna SBAS FAS Data Block.

1) Effective date

This AIRAC AMDT becomes effective at **0000 UTC** on **26 DEC 24**. Insert the attached pages into the AIP CR that day.

2) This AIP AIRAC AMDT includes:

- BRNO/Tuřany (LKTB) - THR RWY 09/27 coordinates change; SBAS FAS Data Block change.

3) Zrušte následující strany

Destroy the following pages

AD	AD 2-LKTB-1-5	3 OCT 24
	LKTB AD 2-19-1	21 MAR 24
	LKTB AD 2-19-2	13 JUL 23
	LKTB AD 2-37-1	5 SEP 24
	LKTB AD 2-37-3	5 SEP 24
	LKTB AD 2-37-4	5 SEP 24
	LKTB AD 2-37-5	5 SEP 24
	LKTB AD 2-37-7	5 SEP 24
	LKTB AD 2-37-9	5 SEP 24
	LKTB AD 2-37-10	5 SEP 24
	LKTB AD 2-37-11	5 SEP 24
	LKTB AD 2-37-13	5 SEP 24

Zařadte následující strany

Insert the following pages

AD	AD 2-LKTB-1-5	26 DEC 24
	LKTB AD 2-19-1	26 DEC 24
	LKTB AD 2-19-2	26 DEC 24
	LKTB AD 2-37-1	26 DEC 24
	LKTB AD 2-37-3	26 DEC 24
	LKTB AD 2-37-4	26 DEC 24
	LKTB AD 2-37-5	26 DEC 24
	LKTB AD 2-37-7	26 DEC 24
	LKTB AD 2-37-9	26 DEC 24
	LKTB AD 2-37-10	26 DEC 24
	LKTB AD 2-37-11	26 DEC 24
	LKTB AD 2-37-13	26 DEC 24

4) Ruční opravy: NIL

5) Proved'te záznam této AIP AIRAC AMDT do GEN 0.2.

6) Následující publikace jsou zahrnuty do této AIP AIRAC AMDT a tím zrušeny:

AIP SUP: NIL
AIC: NIL

Následující NOTAMy jsou zahrnuty do této AIP AIRAC AMDT a budou zrušeny NOTAMem.

NOTAM: NIL

4) Hand amendments: NIL

5) Record this AIP AIRAC AMDT to GEN 0.2.

6) The following publications have been incorporated in this AIP AIRAC AMDT and therefore cancelled:

AIP SUP: NIL
AIC: NIL

The following NOTAMs are incorporated in this AIP AIRAC AMDT. They will be cancelled by NOTAM.

NOTAM: NIL

- KONEC -

- END -

LKTB AD 2.11 POSKYTOVANÉ METEOROLOGICKÉ INFORMACE

LKTB AD 2.11 METEOROLOGICAL INFORMATION PROVIDED

1	Příslušná meteorologická služebna Associated MET Office	BRNO/Tuřany
2	Provozní doba MET služebna poskytující informace mimo provozní dobu Hours of service MET Office outside hours	H24
3	Služebna odpovědná za přípravu předpovědí TAF Období platnosti, interval vydávání Office responsible for TAF preparation Periods of validity, interval of issuance	BRNO 24 HR, vydáván každých / issued at intervals of 6 HR v / at 0500, 1100, 1700, 2300.
4	Druhy přistávacích předpovědí Interval vydávání Type of landing forecast Interval of issuance	NIL
5	Způsob poskytování briefingů / konzultace Briefing / consultation provided	Self-briefing pomocí webového rozhraní IBS (http://ibs.rlp.cz), nebo telefonicky. (viz GEN 3.5 para 4) Self-briefing via IBS system web interface (http://ibs.rlp.cz) or by phone. (See GEN 3.5 para 4)
6	Letová dokumentace Používaný jazyk(y) Flight documentation Language(s) used	Viz řádek 5 Anglický, český (viz GEN 3.5 para 4) See line 5 English, Czech (See GEN 3.5 para 4)
7	Mapy a další informace k dispozici pro briefing nebo konzultaci Charts and other information available for briefing or consultation	Všechny standardní W/T, SW mapy, mapy relativní vlhkosti a produkty z WAFS, dále mapy W/T 2000 ft a W/T 3000 ft, SWL mapa, OPMET data. All standard WAFS charts (W/T, SW, Relative humidity) and products, plus W/T 2000 ft, W/T 3000 ft, and SWL chart, OPMET data.
8	Pomocné vybavení k dispozici pro poskytování informací Supplementary equipment available for providing information	NIL
9	Stanoviště ATS kterým jsou informace poskytovány ATS units provided with information	Praha ACC, TWR
10	Doplňující informace (omezení služby atd.) Additional information (limitation of service, etc.)	☎+420 545 216 487, ☎+420 604 210 865, 📠+420 545 216 487

LKTB AD 2.12 FYZIKÁLNÍ VLASTNOSTI DRAH

LKTB AD 2.12 RUNWAY PHYSICAL CHARACTERISTICS

Označení Designations RWY NR	Zeměpisný a magnetický směr TRUE & MAG BRG	Rozměry RWY Dimensions of RWY (m)	Únosnost (PCN) a povrch RWY a SWY Strength (PCN) and surface of RWY and SWY	Zeměpisné souřadnice THR Zvlnění geoidu THR coordinates Geoid undulation	THR ELEV a nejvyšší ELEV TDZ RWY pro přesné přiblížení THR elevation and highest elevation of TDZ of precision APP RWY
1	2	3	4	5	6
09	098° GEO 092° MAG	2650 x 60	PCN 48/R/A/X/T Beton / Concrete	490910.33N 0164033.11E 147 ft / 45 m	THR 764 ft / 233 m
27	278° GEO 272° MAG			490859.12N 0164242.82E 145.3 ft / 44.3 m	THR 770,6 ft / 234.9 m TDZ 768 ft / 234 m
08	098° GEO 092° MAG	800 x 30	5700 kg / (1.50 MPa) Tráva / Grass	490904.65N 0164108.66E	THR 774 ft / 236 m
26	278° GEO 272° MAG			490901.28N 0164147.54E	THR 764 ft / 233 m

Poznámka: U RWY 09 je od 0,0 km do 0,59 km CONC v šířce 46 m - únosnost PCN 40/R/A/X/T. Po jeho obou stranách méně únosné živičné pásy, široké 7 m.

Note: On RWY09 - section from 0,0 km to 0,59 km there is a CONC part 46 m wide, strength PCN 40/R/A/X/T. On each side of the concrete part there are 7 m wide bituminous shoulders of lower strength.

Označení Designations RWY NR	Sklon RWY-SWY Slope of RWY-SWY	Rozměry SWY SWY dimensions (m)	Rozměry CWY CWY dimensions (m)	Rozměry vzletového a přistávacího pásu Strip dimensions (m)	Rozměry RESA RESA dimensions (m)	Prostor bez překážek OFZ	Poznámky Remarks
	7	8	9	10	11	12	13
09	+ 0,64% / - 0,35% / + 0,34% 662,50 m / 1325,00 m / 662,50 m	NIL	300 x 150	2770 x 280	240 x 120	NIL	Nouzový pás 1500 x 100 m. Emergency strip 1500 x 100 m
27	- 0,34% / + 0,35% / - 0,64% 662,50 m / 1325,00 m / 662,50 m	NIL	300 x 150	2770 x 280	240 x 120	NIL	

Označení Designations RWY NR	Sklon RWY-SWY Slope of RWY-SWY	Rozměry SWY dimensions (m)	Rozměry CWY dimensions (m)	Rozměry vzletového a přistávacího pásu Strip dimensions (m)	Rozměry RESA RESA dimensions (m)	Prostor bez překážek OFZ	Poznámky Remarks
	7	8	9	10	11	12	13
08	- 0,35% 800 m	NIL	60 x 80	920 x 80	NIL	NIL	RWY 08/26 se nachází uvnitř nouzového pásu.
26	+ 0,35% 800 m	NIL	60 x 80	920 x 80	NIL	NIL	Osová vzdálenost od RWY 09/27 je 80 m. RWY 08/26 is located inside of the emergency strip. Centreline distance from RWY 09/27 is 80 m.

LKTB AD 2.13 VYHLÁŠENÉ DÉLKY
LKTB AD 2.13 DECLARED DISTANCES

Označení RWY RWY Designator	TORA (m)	TODA (m)	ASDA (m)	LDA (m)	Poznámky Remarks
1	2	3	4	5	6
09	2650	2950	2650	2650	NIL
27	2650	2950	2650	2650	NIL
08	800	860	800	800	NIL
26	800	860	800	800	NIL

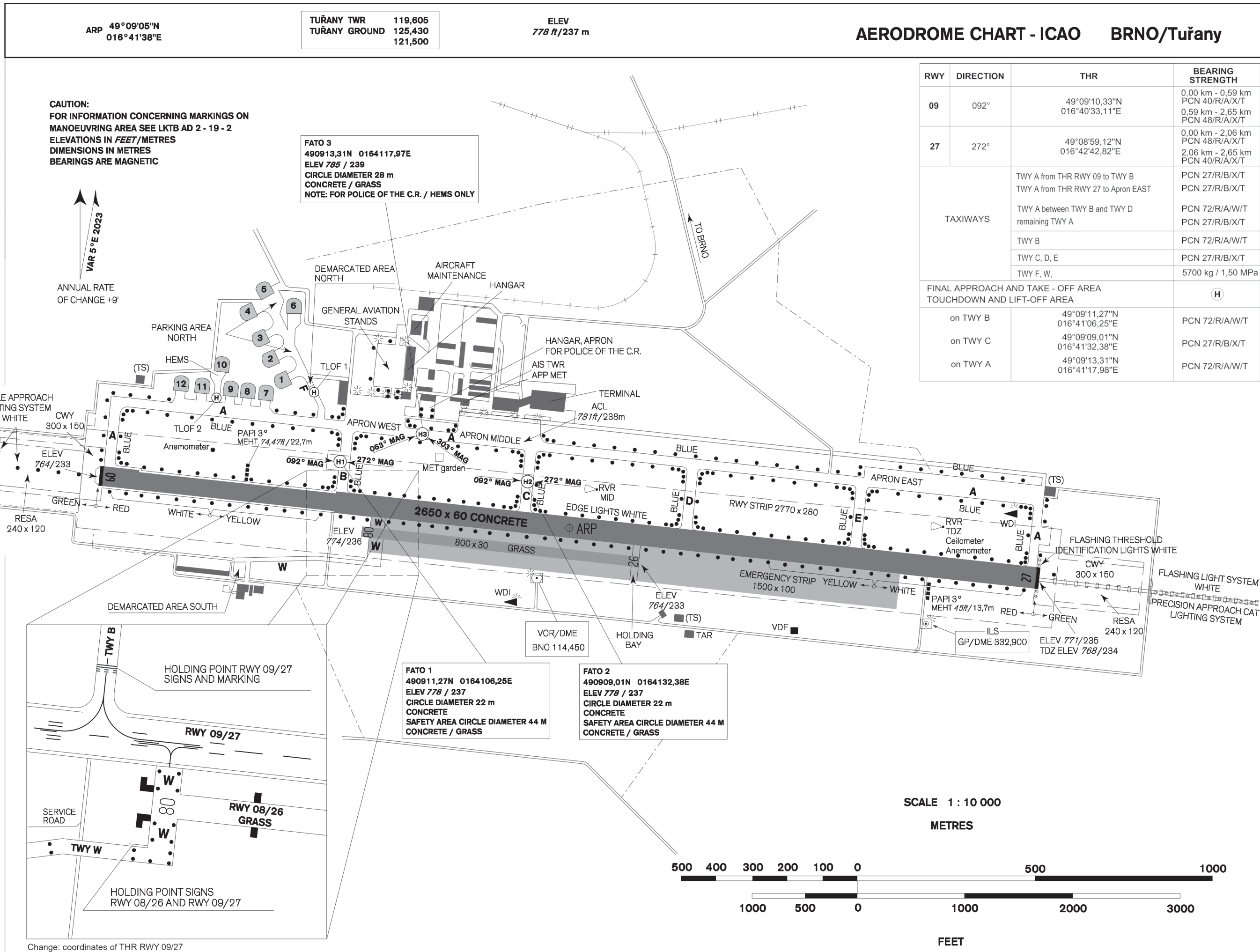
2.13.1 VZLET Z KŘIŽOVATKY
2.13.1 INTERSECTION TAKE-OFF

Označení RWY RWY Designator	Od From	TORA (m)	TODA (m)	ASDA (m)	Poznámky Remarks
1	2	3	4	5	6
09	TWY B	2000	2300	2000	DAY ONLY
	TWY C	1465	1765	1465	DAY ONLY
27	TWY E	2137	2437	2137	DAY ONLY
	TWY D	1662	1962	1662	DAY ONLY
	TWY C	1206	1506	1206	DAY ONLY
	TWY B	673	973	673	DAY ONLY

LKTB AD 2.14 PŘIBLIŽOVACÍ A DRÁHOVÁ SVĚTELNÁ SOUSTAVA
LKTB AD 2.14 APPROACH AND RUNWAY LIGHTING

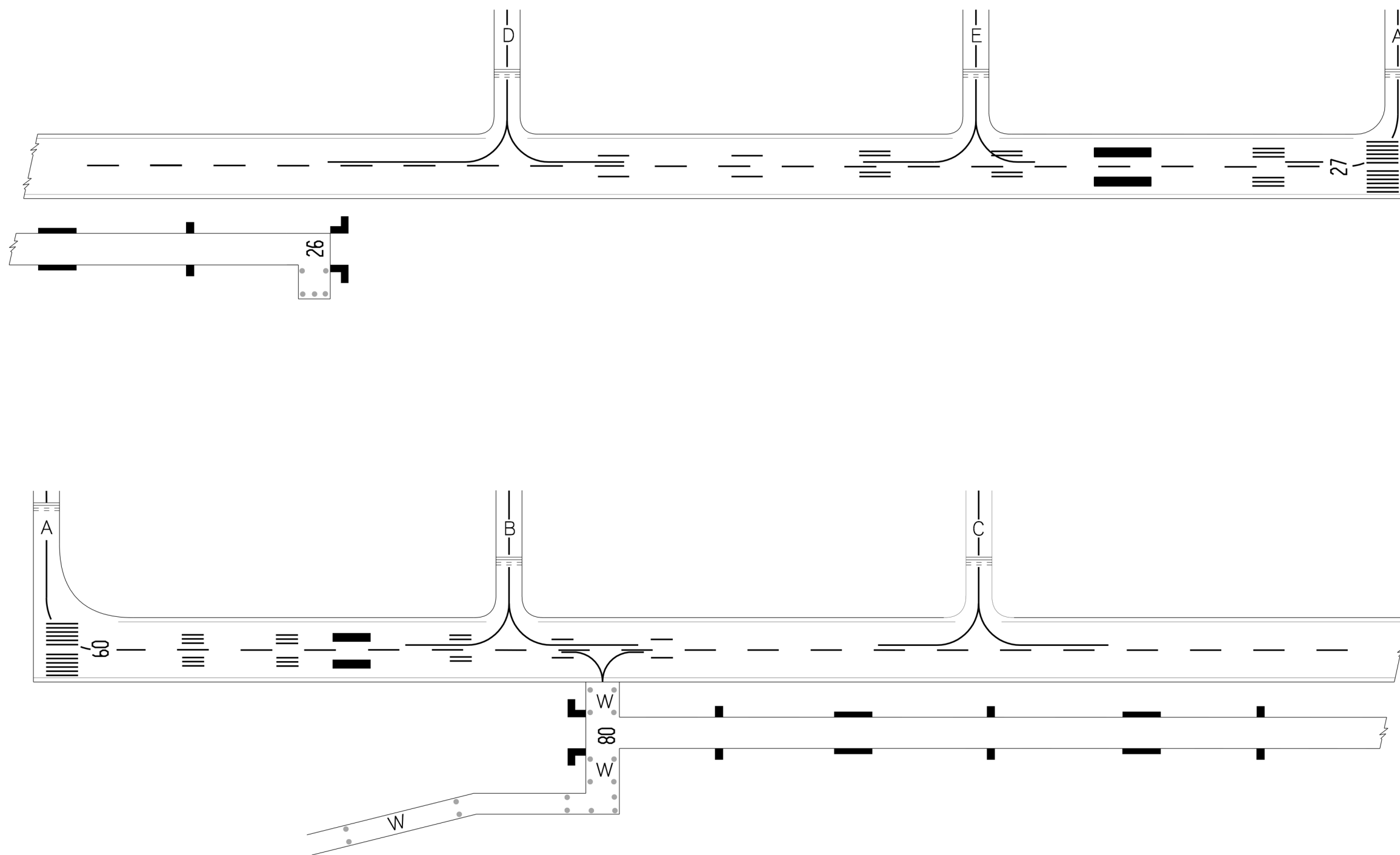
Označení RWY RWY Designator	APCH LGT typ / type LEN INTST	THR LGT barva / colour WBAR	VASIS (MEHT) PAPI	TDZ LGT LEN	RCLL LEN rozestupy / spacing barva / colour INTST	REDL LEN rozestupy / spacing barva / colour INTST	RENL barva / colour WBAR	SWY LGT LEN (m) barva / colour	Poznámky Remarks
1	2	3	4	5	6	7	8	9	10
09	SALS 420 m LIM 1 příčka / crossbar 300 m před / in front of THR	zelená / green LIM	PAPI 3° L MEHT 74,47 ft / 22,7 m		NIL	W VRB LIH LAST 600 m Y	červená / red LIH/LIM	NIL	NIL
27	PALS LIH/LIM CAT I	zelená / green LIH/LIM	PAPI 3° L MEHT 45,0 ft / 13,7 m		NIL	W VRB LIH LAST 600 m Y	červená / red LIH/LIM	NIL	Světelná záblesková soustava / Sequence Flash AVBL





AERODROME CHART - ICAO - MARKINGS ON MANOEUVRING AREA

BRNO / Tuřany



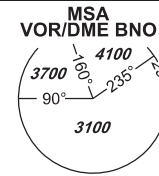
change: new layout;
previous change: markings on MANOEUVRING AREA on RWY 27

INSTRUMENT APPROACH CHART - ICAO

AERODROME ELEV 778
THR RWY 27 ELEV 771

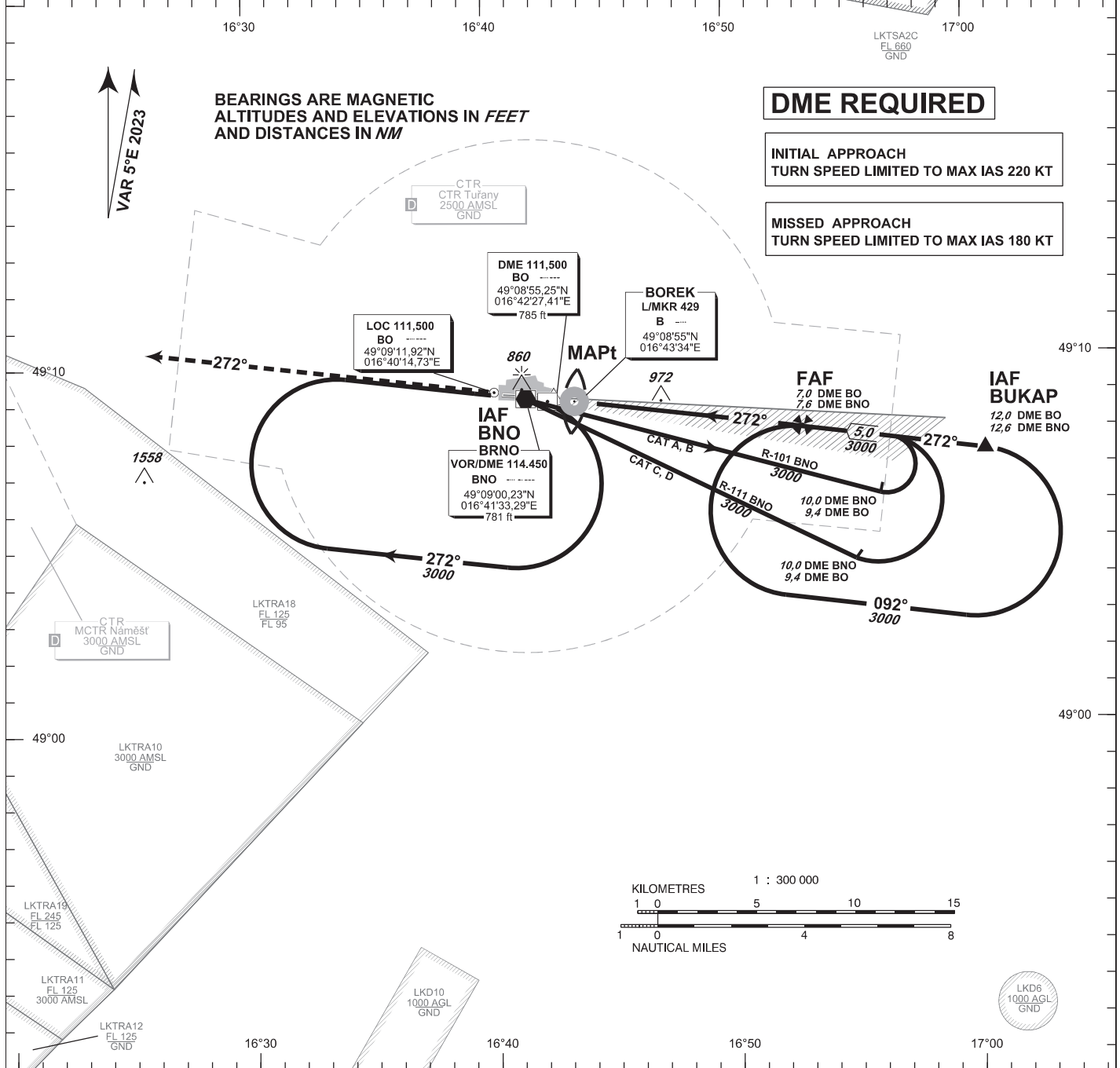
TUŘANY/TOWER 119,605
125,430
121,500

PRAHA RADAR 127,350
121,500



BRNO/Tuřany ILS

RWY 27

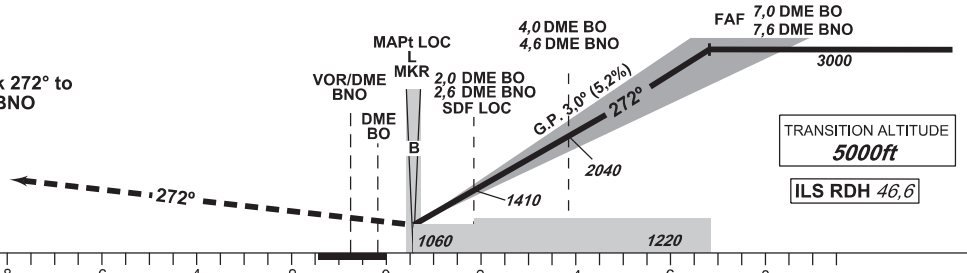


MISSED APPROACH:

Climb on track 272° to 4000 ft AMSL, expect vectoring. In case of RCF climb on track 272° to 8,0 NM DME BNO and turn right to VOR/DME BNO in climbing to 4000 ft AMSL.

THR 490859.12N 0164242.82E
ELEV 771

NM FM THR27



OCA/OCH		A	B	C	D
Straight - in	Cat I	ft 927/156	939/169	947/176	958/188
	Approach	ft 1060/290			
Circling (South of AD Only)		ft 1210/-	1440/-	1560/-	1740/-

DME BO NM	7	6	5	4	3	2	1
DME BNO NM	7,6	6,6	5,6	4,6	3,6	2,6	1,6
DIST THR NM	6,8	5,8	4,8	3,8	2,8	1,8	0,8
ALTITUDES ft	3000	2680	2360	2040	1720	1410	1090

	kt	80	100	120	140	160	180
FAF - MAPt 6,3 NM	min:sec	4:42	3:46	3:08	2:41	2:21	2:06
Rate of descent	ft/min	420	530	640	740	850	960

change: coordinates of THR RWY 27

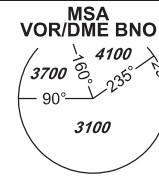
Timing is not authorized for defining the MAPt.

INSTRUMENT APPROACH CHART - ICAO

AERODROME ELEV 778
THR RWY 27 ELEV 771

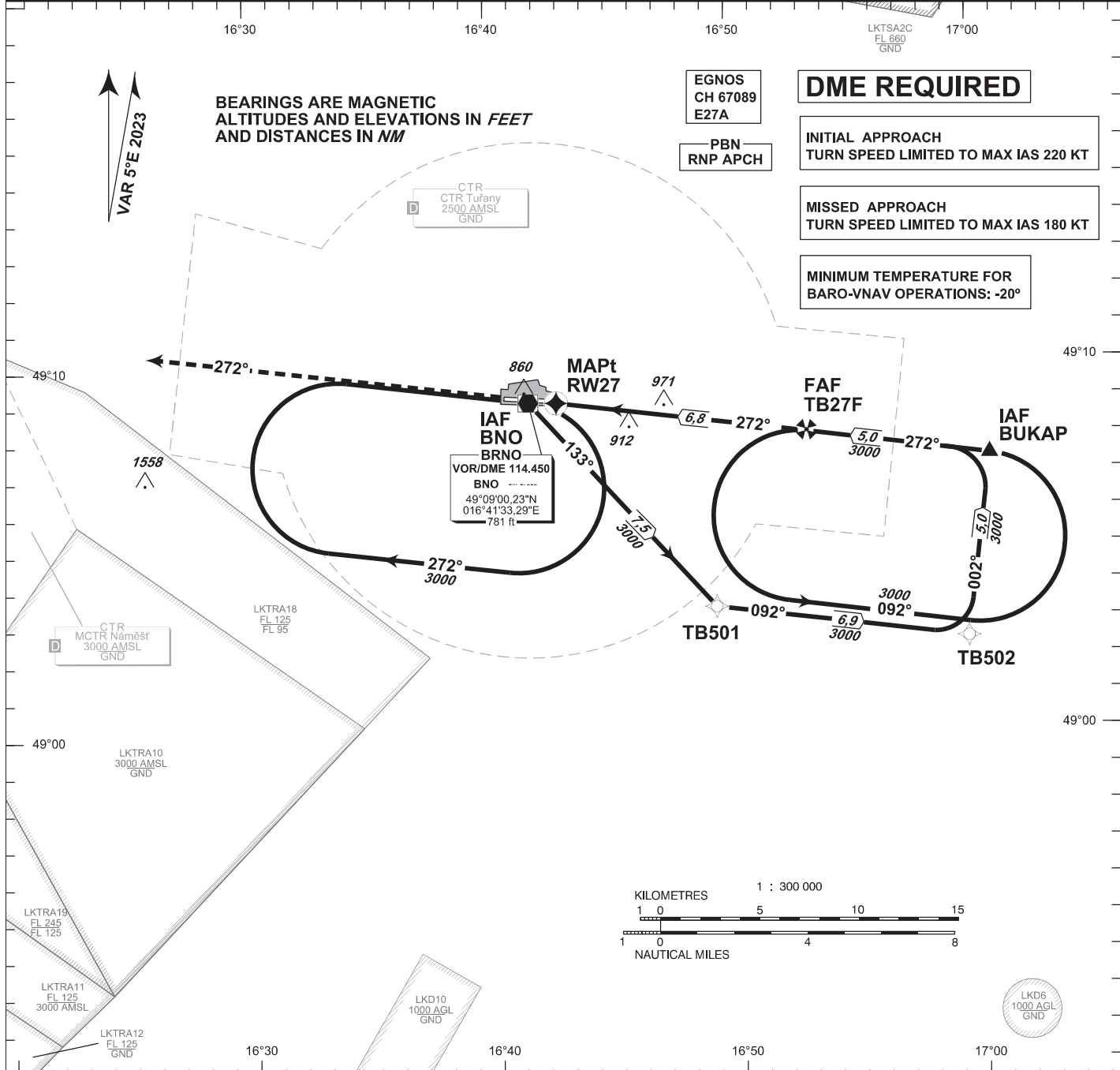
TUŘANY/TOWER 119,605
125,430
121,500

PRAHA RADAR 127,350
121,500



BRNO/Tuřany RNP

RWY 27



BEARINGS ARE MAGNETIC
ALTITUDES AND ELEVATIONS IN FEET
AND DISTANCES IN NM

VAR 5°E 2023

EGNOS
CH 67089
E27A

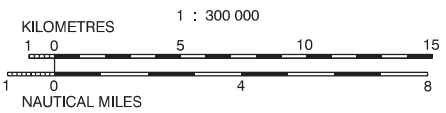
DME REQUIRED

INITIAL APPROACH
TURN SPEED LIMITED TO MAX IAS 220 KT

MISSED APPROACH
TURN SPEED LIMITED TO MAX IAS 180 KT

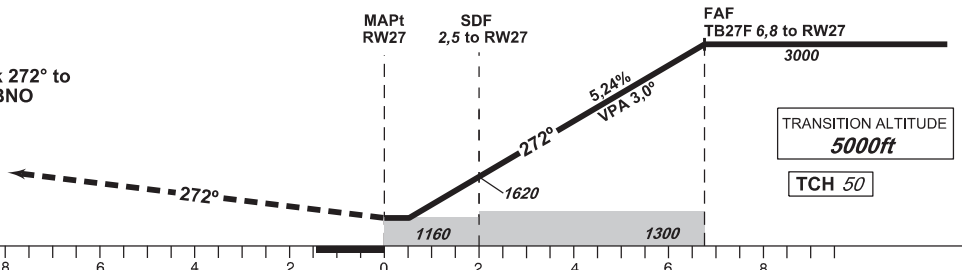
MINIMUM TEMPERATURE FOR
BARO-VNAV OPERATIONS: -20°

PBN
RNP APCH



MISSED APPROACH:

Climb on track 272° to 4000 ft AMSL, expect vectoring. In case of RCF climb on track 272° to 8,0 NM DME BNO and turn right to VOR/DME BNO in climbing to 4000 ft AMSL.



THR 490859.12N 0164242.82E
ELEV 771

TRANSITION ALTITUDE
5000ft

TCH 50

OCA/OCH		A	B	C	D
LNAV	ft		1160/390		
LNAV/VNAV	ft		1053/282		
LPV	ft		971/200		
Circling (South of AD Only)	ft	1210 / -	1440 / -	1560 / -	1740 / -

DIST THR NM	6	5	4	3	2	1
ALTITUDES ft	2730	2410	2090	1780	1460	1140

FAF - MAPt 6,8 NM	kt	80	100	120	140	160	180
min:sec		5:08	4:06	3:25	2:56	2:34	2:17
Rate of descent	ft/min	420	530	640	740	850	960

Timing is not authorized for defining the MAPt.

change: coordinates of THR RWY 27

Posloupnost traťových bodů / Way point sequence

Od / From IAF BUKAP		
BUKAP	IF/IAF	fly-by
TB27F	FAF	fly-by
RW27	MAPt	fly-over

Od / From IAF VOR/DME BNO		
VOR/DME BNO	IAF	fly-by
TB501		fly-by
TB502		fly-by
BUKAP	IF	fly-by
TB27F	FAF	fly-by
RW27	MAPt	fly-over

Seznam traťových bodů / Way point list		
BUKAP	49 07 24,66 N	017 00 36,17 E
VOR/DME BNO	49 09 00,23 N	016 41 33,29 E
TB501	49 03 22,94 N	016 49 11,05 E
TB502	49 02 27,72 N	016 59 34,69 E
TB27F	49 08 04,91 N	016 53 02,78 E
RW27	49 08 59,12 N	016 42 42,82 E

SBAS FAS Data Block

Vstupní data / Input Data

Parametry / Parameters	Hodnoty / Values
Operation Type	0
SBAS Provider	1
Airport Identifier	LKTB
Runway	27
Runway Direction	0
Approach Performance Designator	0
Route Indicator	
Reference Path Data Selector	0
Reference Path Identifier	E27A
LTP/FTP Latitude	490859.1200N
LTP/FTP Longitude	0164242.8200E
LTP/FTP Ellipsoidal Height (metres)	279.2
FPAP Latitude	490910.6325N
Delta FPAP Latitude (seconds)	11.5125
FPAP Longitude	0164029.6355E
Delta FPAP Longitude (seconds)	-133.1845
Threshold Crossing Height	50
TCH Units Selector	0
Glidepath Angle (degrees)	3.00
Course Width (metres)	105.00
Length Offset (metres)	0
HAL (metres)	40.0
VAL (metres)	35.0

Výstupní data / Output Data

Parametry / Parameters	Hodnoty / Values
Data Block	10 02 14 0B 0C 1B 00 00 01 37 32 05 E0 C0 17 15 08 06 2C 07 E8 1E F1 59 00 7F EF FB F4 01 2C 01 64 00 C8 AF 96 A4 04 08
Calculated CRC Value	96A40408

Required Additional Data (not CRC wrapped)

These additional data are not required for CRC calculation, but they need to be provided to datahouses for procedure coding in ARINC 424 records.

Parametry / Parameters	Hodnoty / Values
ICAO Code	LK
LTP/FTP Orthometric Height (metres)	234.9

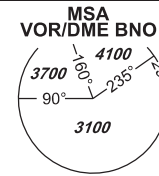


INSTRUMENT APPROACH CHART - ICAO

AERODROME ELEV 778
THR RWY 27 ELEV 771

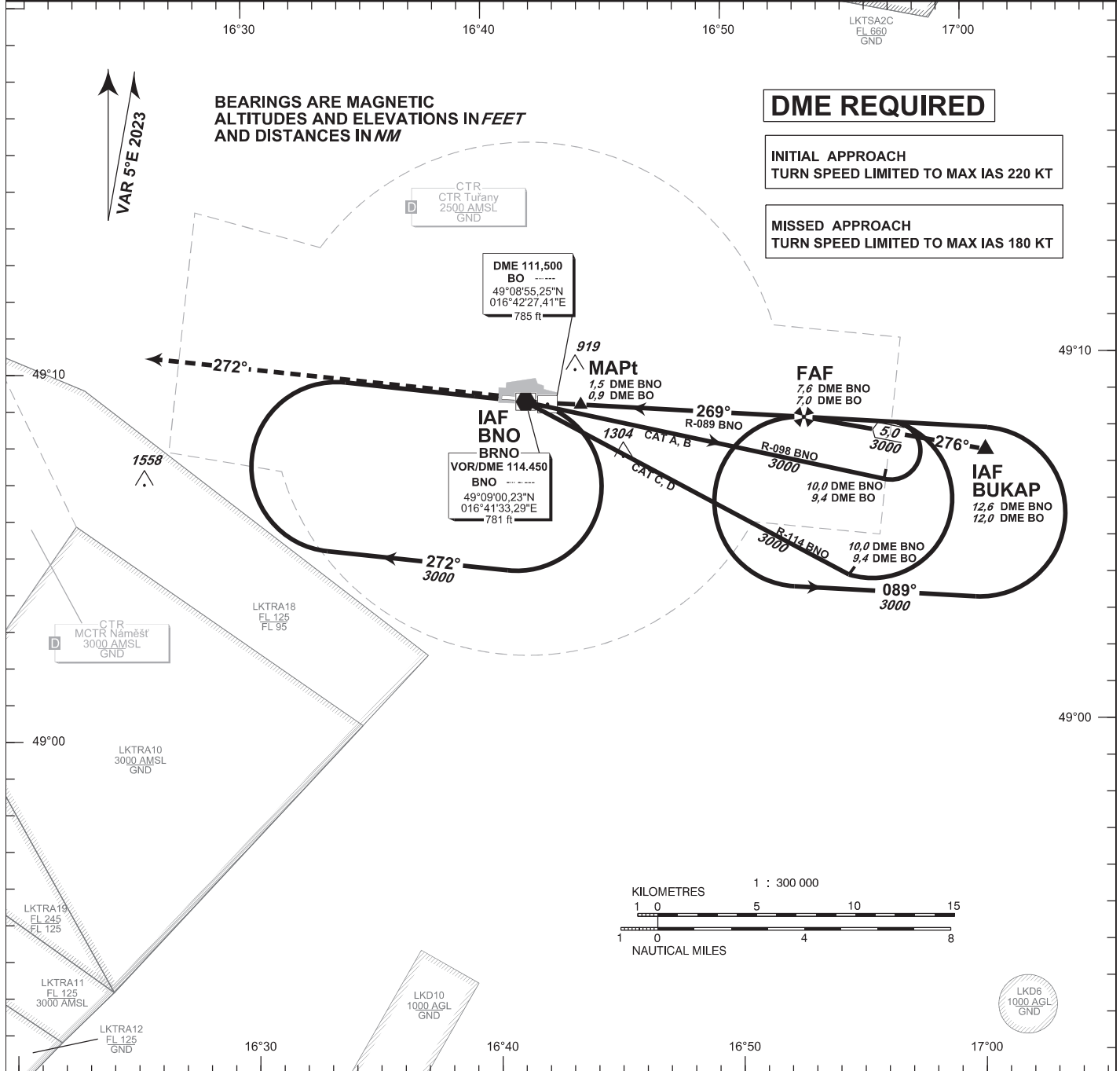
TUŘANY/TOWER 119,605
125,430
121,500

PRAHA RADAR 127,350
121,500



BRNO/Tuřany VOR

RWY 27

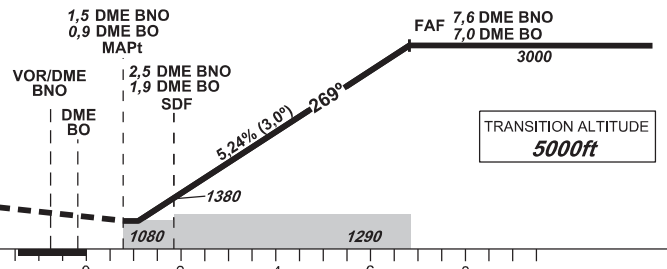


MISSED APPROACH:

Climb on track 272° to 4000 ft AMSL, expect vectoring. In case of RCF climb on track 272° to 8,0 NM DME BNO and turn right to VOR/DME BNO in climbing to 4000 ft AMSL.

THR 490859.12N 0164242.82E
ELEV 771

NM FM THR27



OCA/OCH	A	B	C	D
Straight - in Approach	ft 1080/300			
Circling (South of AD Only)	ft 1210/-	1440/-	1560/-	1740/-

DME BNO / NM	7	6	5	4	3	2
DME BO / NM	6,4	5,4	4,4	3,4	2,4	1,4
DIST THR / NM	6,2	5,2	4,2	3,2	2,2	1,2
ALTITUDES ft	2810	2490	2170	1850	1530	1220

kt	80	100	120	140	160	180
FAF - MAPt 6,1 NM	min:sec 4:34	3:39	3:03	2:37	2:17	2:02
Rate of descent	ft./min 420	530	640	740	850	960

change: coordinates of THR RWY 27

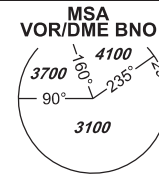
Timing is not authorized for defining the MAPt.

INSTRUMENT APPROACH CHART - ICAO

AERODROME ELEV 778
THR RWY 27 ELEV 771

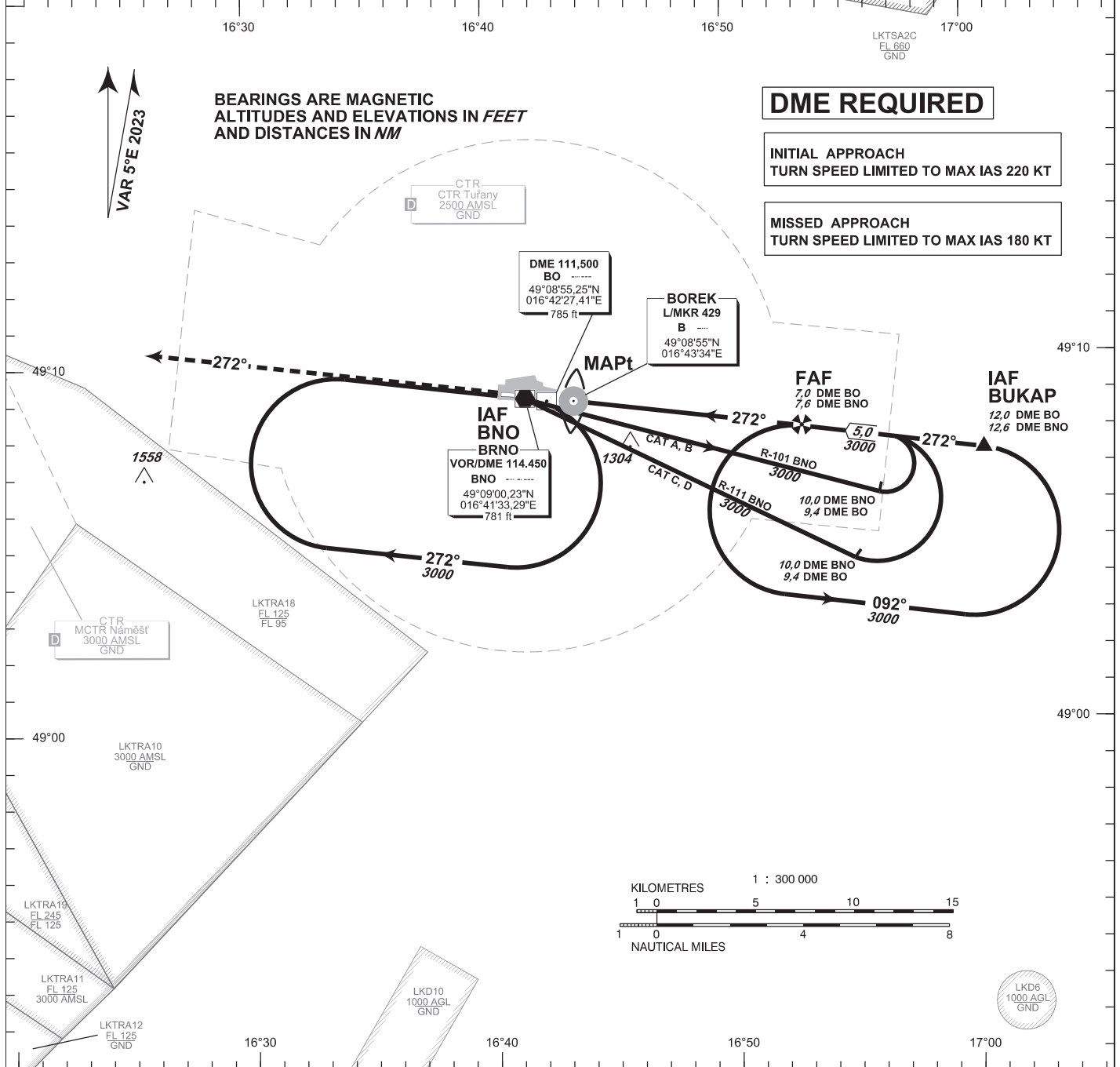
TUŘANY/TOWER 119,605
125,430
121,500

PRAHA RADAR 127,350
121,500



BRNO/Tuřany NDB

RWY 27

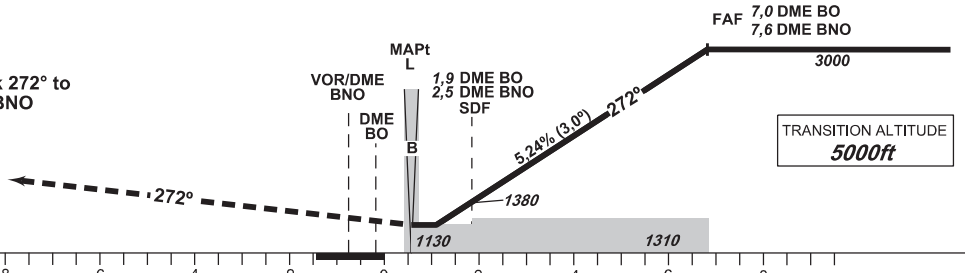


MISSED APPROACH:

Climb on track 272° to 4000 ft AMSL, expect vectoring. In case of RCF climb on track 272° to 8,0 NM DME BNO and turn right to VOR/DME BNO in climbing to 4000 ft AMSL.

THR 490859.12N 0164242.82E
ELEV 771

NM FM THR27



OCA/OCH	A	B	C	D	
Straight - in Approach	ft	1130/350			
Circling (South of AD Only)	ft	1210/-	1440/-	1560/-	1740/-

DME BO NM	7	6	5	4	3	2
DME BNO NM	7,6	6,6	5,6	4,6	3,6	2,6
DIST THR NM	6,8	5,8	4,8	3,8	2,8	1,8
ALTITUDES ft	3000	2680	2360	2040	1720	1410

	kt	80	100	120	140	160	180
FAF - MAPt 6,3 NM	min:sec	4:42	3:46	3:08	2:41	2:21	2:06
Rate of descent	ft/min	420	530	640	740	850	960

change: coordinates of THR RWY 27

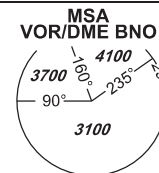
Timing is not authorized for defining the MAPt.

INSTRUMENT APPROACH CHART - ICAO

AERODROME ELEV 778
THR RWY 09 ELEV 764

TUŘANY/TOWER 119,605
125,430
121,500

PRAHA RADAR 127,350
121,500



BRNO/Tuřany RNP

RWY 09

MINIMUM TEMPERATURE FOR BARO-VNAV OPERATIONS: -20°C

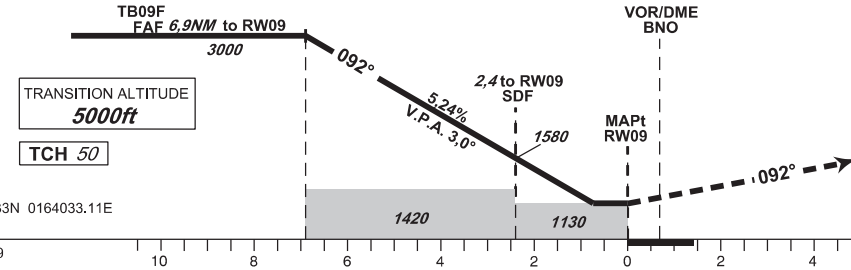
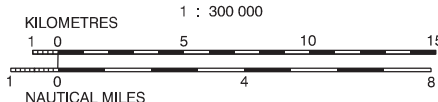
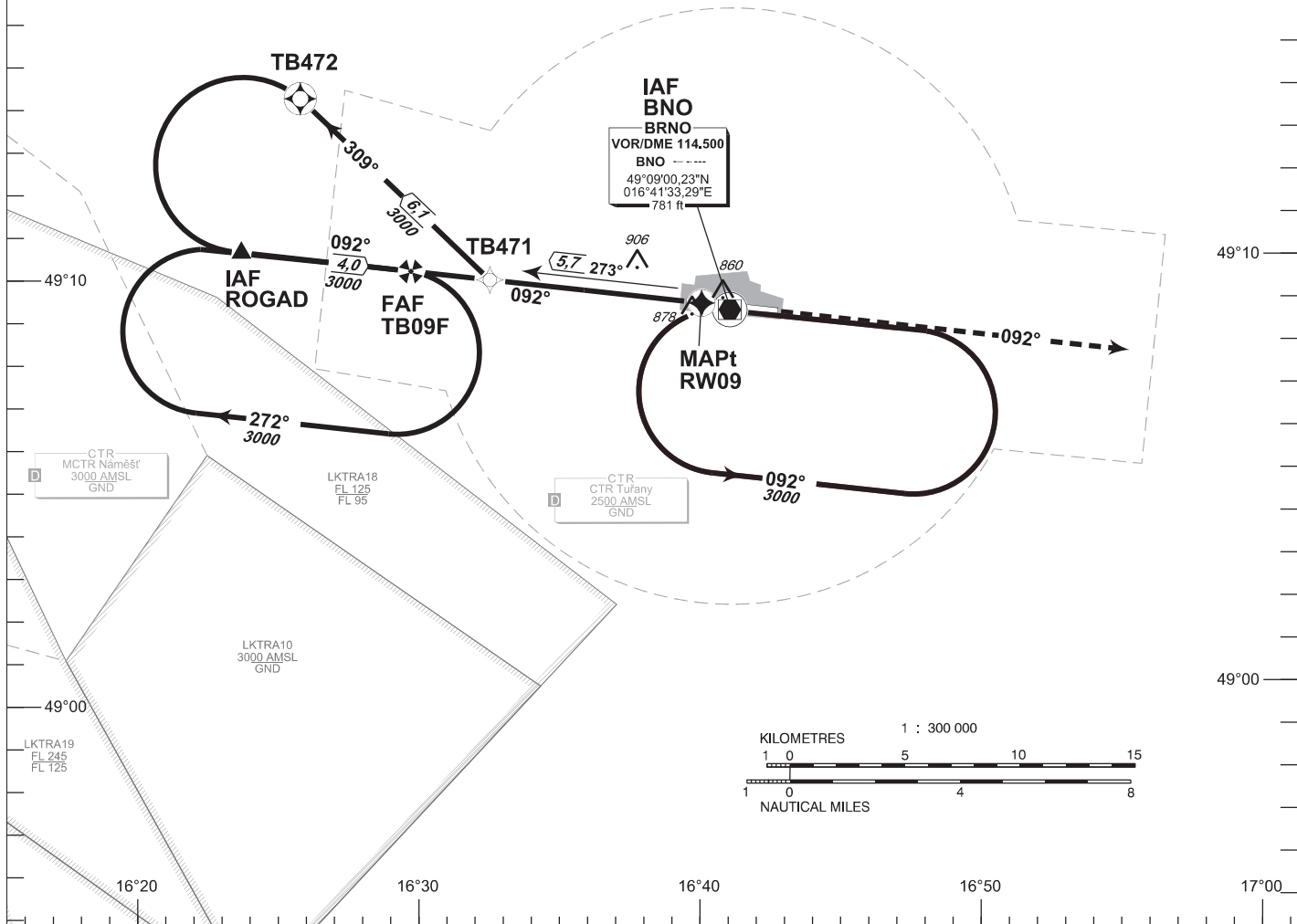
INITIAL APPROACH TURN SPEED LIMITED TO MAX IAS 220 KT

BEARINGS ARE MAGNETIC
ALTITUDES AND ELEVATIONS IN FEET
AND DISTANCES IN NM

EGNOS
CH 95975
E09A

PBN
RNP APCH

DME REQUIRED



MISSED APPROACH:

Climb on track 092° to 4000 ft AMSL, expect vectoring. In case of RCF climb on track 092° to 8,0 NM DME BNO and turn right to VOR/DME BNO in climbing to 4000 ft AMSL.

THR 490910.33N 0164033.11E
ELEV 764
NM FM THR09

OCA/OCH		A	B	C	D
LNAV	ft	1130/360			
LNAV/VNAV	ft	1040/276			
LPV	ft	1014 / 250	1014 / 250	1014 / 250	1014 / 250
Circling (South of AD Only)	ft	1210 / -	1440 / -	1560 / -	1740 / -

DIST THR NM	6	5	4	3	2	1
ALTITUDES ft	2720	2410	2090	1770	1450	1130

FAF - MAPt 6,9 NM	min:sec	80	100	120	140	160	180
		kt	5:09	4:07	3:26	2:57	2:35
Rate of descent	ft/min	420	530	640	740	850	960

change: coordinates of THR RWY 09

Timing is not authorized for defining the MAPt.

Posloupnost traťových bodů / Waypoint sequence

Od / From IAF ROGAD		
ROGAD	IF/IAF	fly-by
TB09F	FAF	fly-by
RW09	MAPt	fly-over

Od / From IAF VOR/DME BNO		
VOR/DME BNO	IAF	fly-by
TB471		fly-by
TB472		fly-over
ROGAD	IF	fly-by
TB09F	FAF	fly-by
RW09	MAPt	fly-over

Seznam traťových bodů / Way point list		
ROGAD	49 10 34,18 N	016 24 08,14 E
VOR/DME BNO	49 09 00,23 N	016 41 33,29 E
TB471	49 09 49,20 N	016 33 00,04 E
TB472	49 14 09,35 N	016 26 20,84 E
TB09F	49 10 03,58 N	016 30 10,89 E
RW09	49 09 10,33 N	016 40 33,11 E

SBAS FAS Data Block

Vstupní data / Input Data

Parametry / Parameters	Hodnoty / Values
Operation Type	0
SBAS Provider	1
Airport Identifier	LKTB
Runway	09
Runway Direction	0
Approach Performance Designator	0
Route Indicator	
Reference Path Data Selector	0
Reference Path Identifier	E09A
LTP/FTP Latitude	490910.3300N
LTP/FTP Longitude	0164033.1100E
LTP/FTP Ellipsoidal Height (metres)	278.0
FPAP Latitude	490859.1200N
Delta FPAP Latitude (seconds)	-11.2100
FPAP Longitude	0164242.8200E
Delta FPAP Longitude (seconds)	129.7100
Threshold Crossing Height	50
TCH Units Selector	0
Glidepath Angle (degrees)	3.00
Course Width (metres)	105.00
Length Offset (metres)	0
HAL (metres)	40.0
VAL (metres)	35.0

Výstupní data / Output Data

Parametry / Parameters	Hodnoty / Values
Data Block	10 02 14 0B 0C 09 00 00 01 39 30 05 74 18 18 15 AC 10 28 07 DC 1E 6C A8 FF 5C F5 03 F4 01 2C 01 64 00 C8 AF 21 E9 E9 D5
Calculated CRC Value	21E9E9D5

Required Additional Data (not CRC wrapped)

These additional data are not required for CRC calculation, but they need to be provided to datahouses for procedure coding in ARINC 424 records.

Parametry / Parameters	Hodnoty / Values
ICAO Code	LK
LTP/FTP Orthometric Height (metres)	233.0

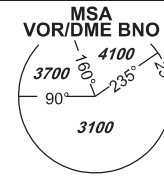


INSTRUMENT APPROACH CHART - ICAO

AERODROME ELEV 778
THR RWY 09 ELEV 764

TUŘANY/TOWER 119,605
125,430
121,500

PRAHA RADAR 127,350
121,500



BRNO/Tuřany VOR

RWY 09

16°20

16°30

16°40

16°50

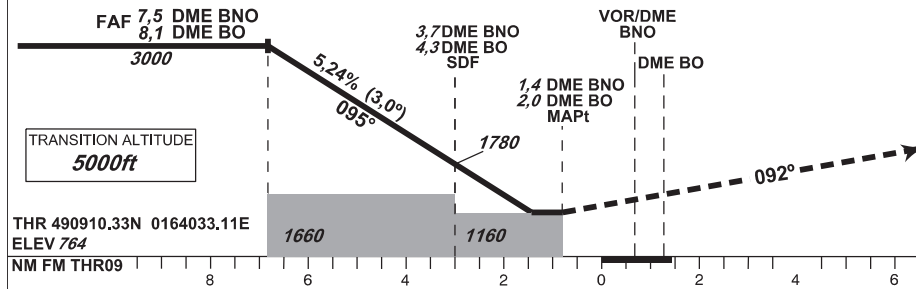
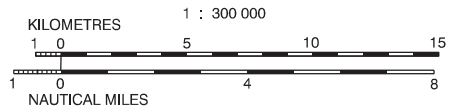
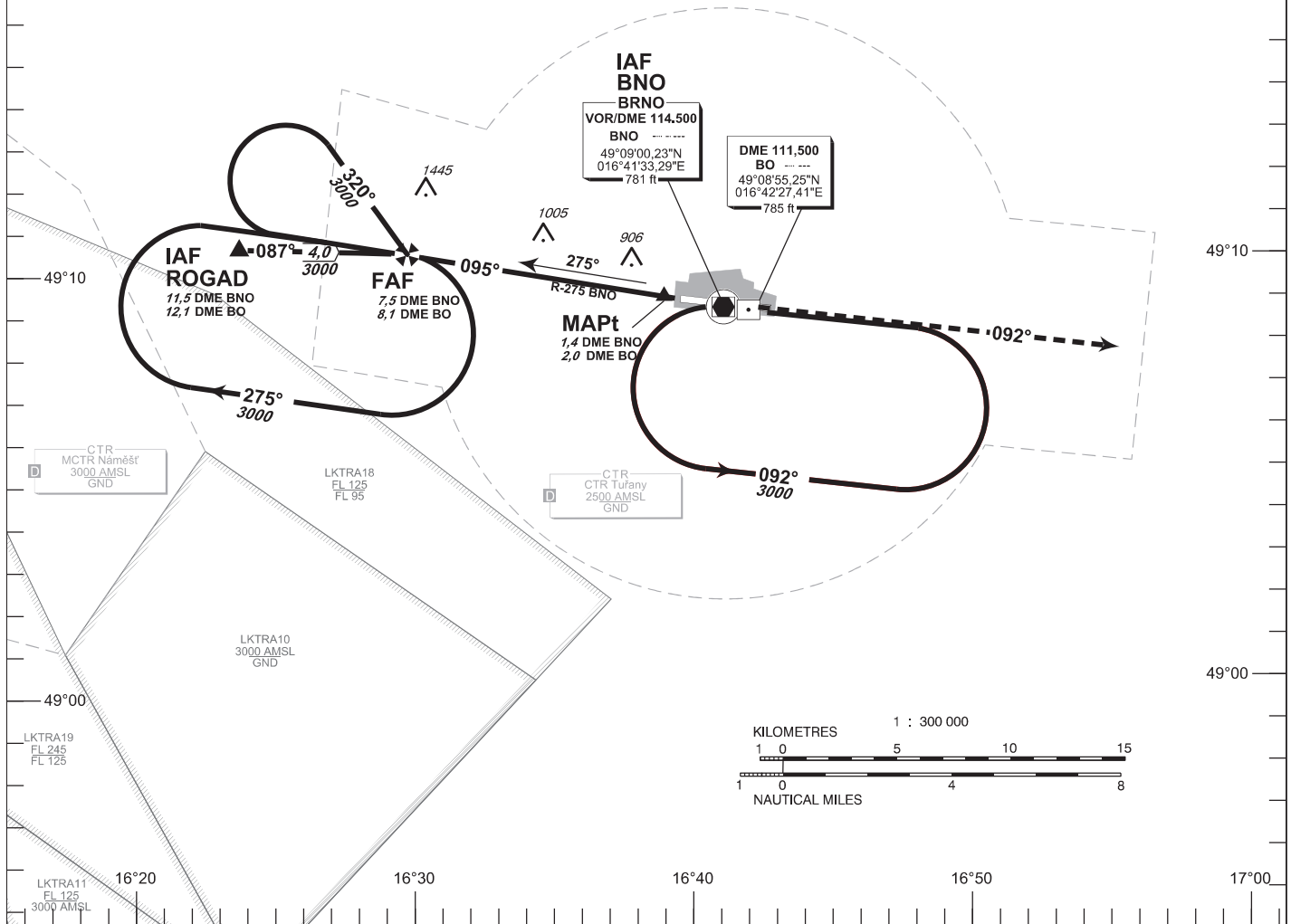
LKTSA2 FL 660 GND
LKTSA2B FL 660 GND
LKTSA2C FL 660 GND



DME REQUIRED

INITIAL APPROACH
TURN SPEED LIMITED TO MAX IAS 220 KT

BEARINGS ARE MAGNETIC
ALTITUDES AND ELEVATIONS IN FEET
AND DISTANCES IN NM



MISSED APPROACH:

Climb on track 092° to 4000 ft AMSL, expect vectoring. In case of RCF climb on track 092° to 8,0 NM DME BNO and turn right to VOR/DME BNO. In climbing to 4000 ft AMSL.

THR 490910.33N 0164033.11E
ELEV 764

NM FM THR09 8 6 4 2 0 2 4 6 8 10 12

OCA/OCH		A	B	C	D
Straight - in Approach	ft	1160/390			
Circling (South of AD Only)	ft	1210/-	1440/-	1560/-	1740/-

DME BNO NM	8	7	6	5	4	3	2
DME BO NM	8,6	7,6	6,6	5,6	4,6	3,6	2,6
DIST THR NM	7,3	6,3	5,3	4,3	3,3	2,3	1,3
ALTITUDES ft	3150	2830	2510	2190	1870	1550	1240

FAF - MAPt 6,1 NM	kt	80	100	120	140	160	180
min:sec		4:35	3:40	3:03	2:37	2:17	2:02
Rate of descent	ft/min	420	530	640	740	850	960

change: coordinates of THR RWY 09

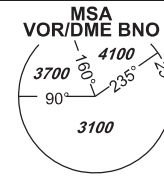
Timing Is not authorized for defining the MAPt.

**INSTRUMENT
APPROACH
CHART - ICAO**

AERODROME ELEV **778**
THR RWY 09 ELEV **764**

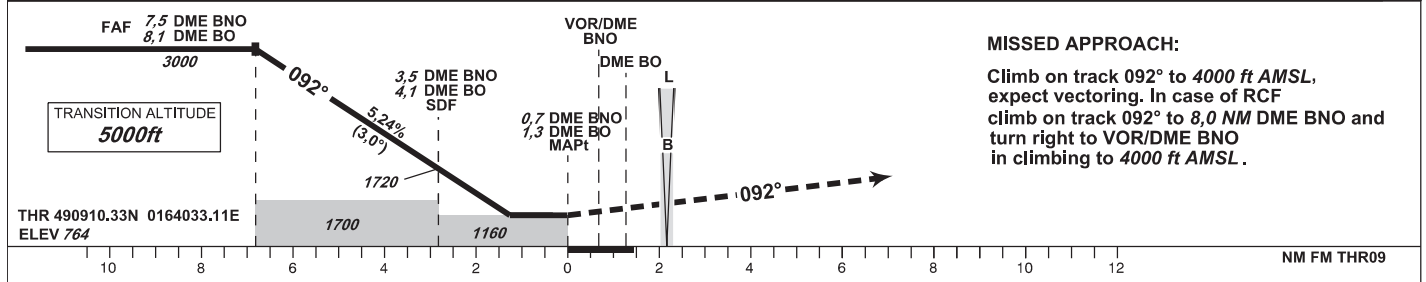
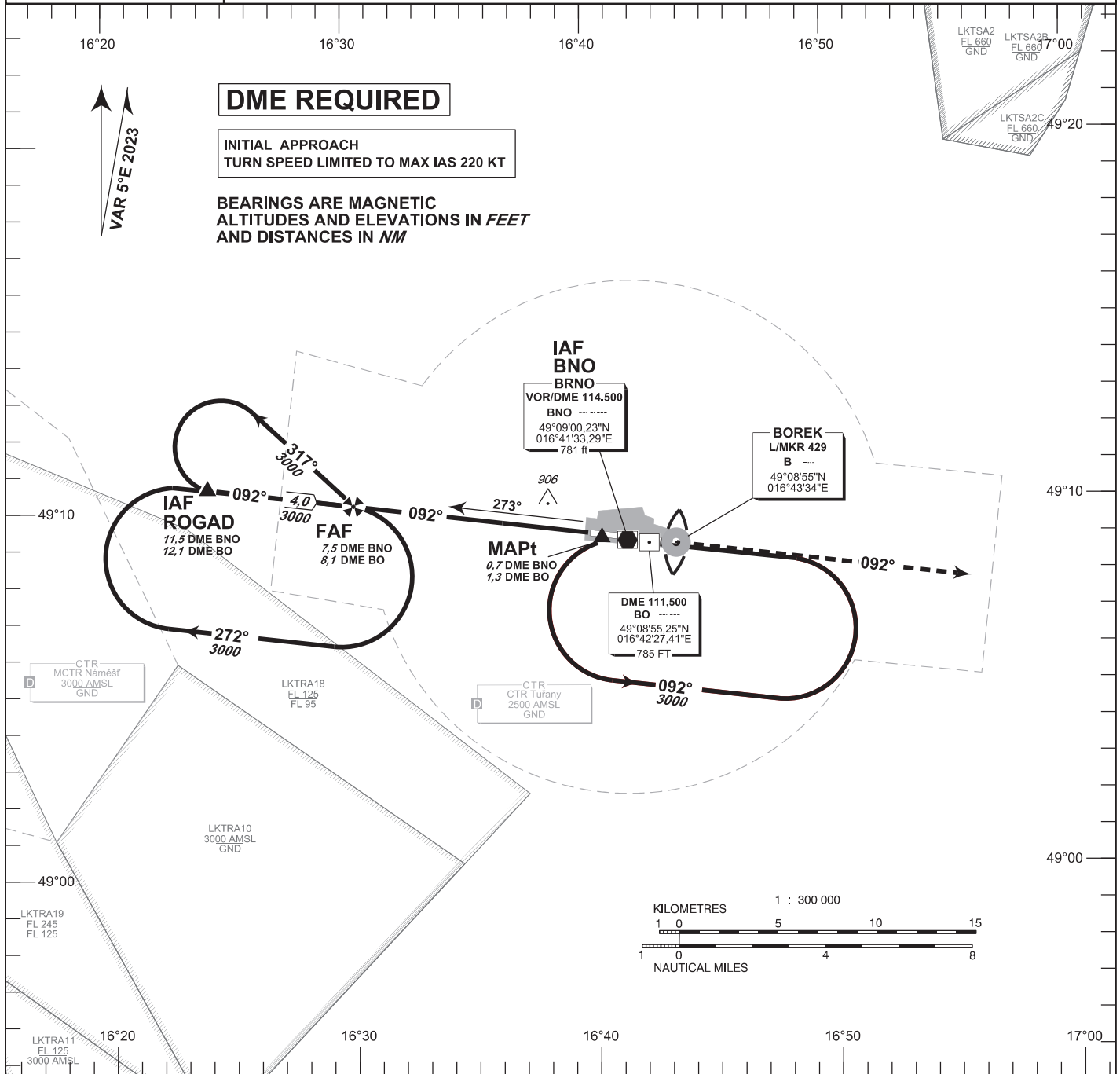
TUŘANY/TOWER **119,605**
125,430
121,500

PRAHA RADAR **127,350**
121,500



**BRNO/Tuřany
NDB**

RWY 09



OCA/OCH		A	B	C	D
Straight - in Approach	ft	1160/390			
Circling (South of AD Only)	ft	1210/-	1440/-	1560/-	1740/-

DME BNO NM	8	7	6	5	4	3	2
DME BO NM	8,6	7,6	6,6	5,6	4,6	3,6	2,6
DIST THR NM	7,3	6,3	5,3	4,3	3,3	2,3	1,3
ALTITUDES ft	3150	2830	2510	2190	1870	1550	1240

FAF - MAPt 6,9 NM	kt	80	100	120	140	160	180
Rate of descent	min:sec	5:09	4:07	3:26	2:57	2:35	2:17
	ft/min	420	530	640	740	850	960

change: coordinates of THR RWY 09

Timing Is not authorized for defining the MAPt.

