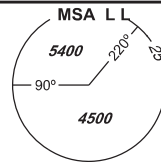
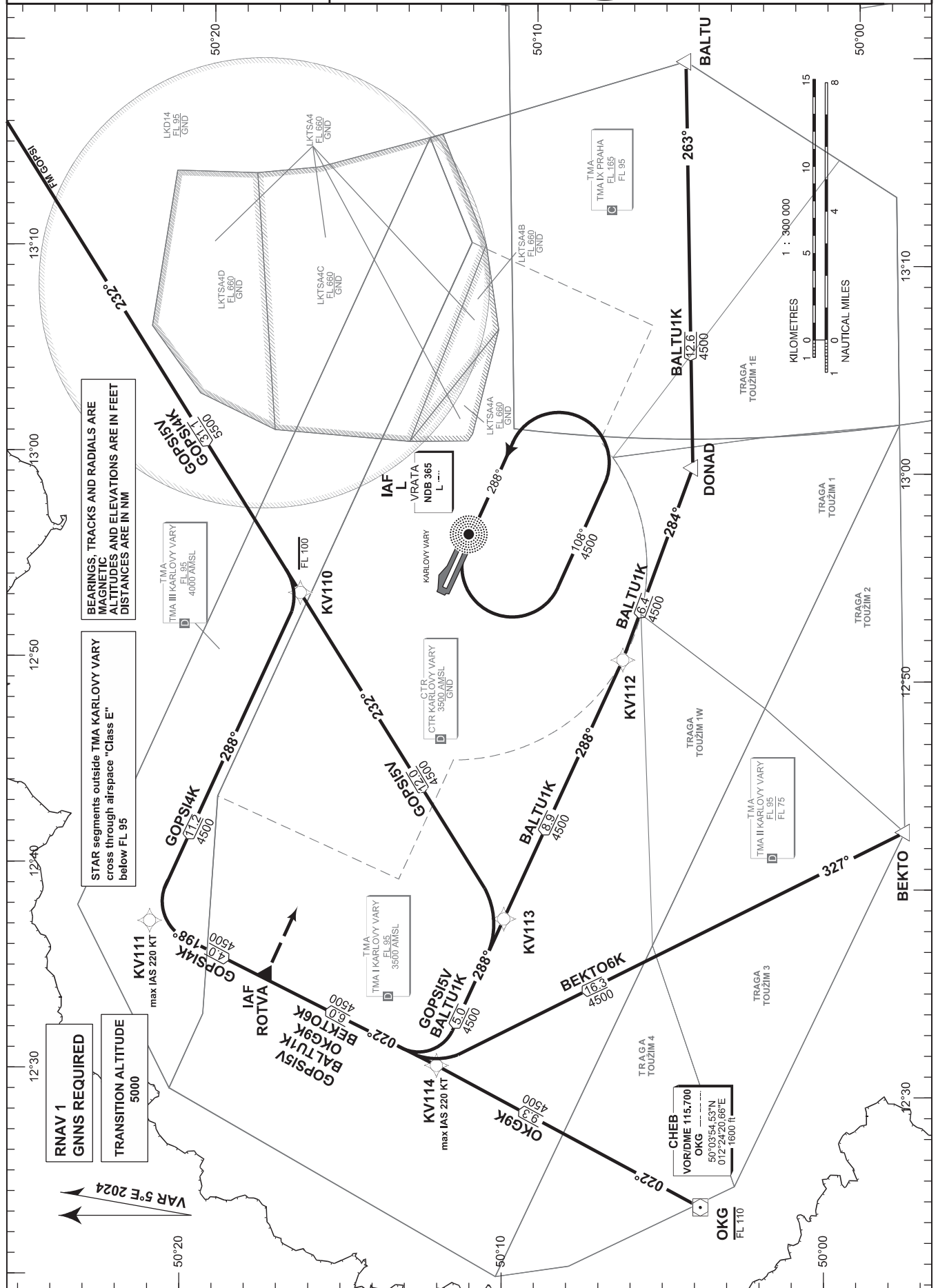


# STANDARD ARRIVAL CHART-INSTRUMENT (STAR) - ICAO

PRAHA RADAR	118.650
VARY TOWER	121.230
KARLOVY VARY ATIS	127.640
EMERGENCY FREQ	121.500



**KARLOVY VARY**  
**RNAV Rwy 11**  
 BALTU1K BEKTO6K GOPSI4K  
 GOPSI5V OKG9K



BEARINGS, TRACKS AND RADIALS ARE MAGNETIC ALTITUDES AND ELEVATIONS ARE IN FEET DISTANCES ARE IN NM

STAR segments outside TMA KARLOVY VARY cross through airspace "Class E" below FL 95

RNAV 1  
 GNSS REQUIRED  
 TRANSITION ALTITUDE  
 5000

VAR 5°E 2024

change: VAR, MAG tracks, designations

Recommended coding:

Designator				Route					Remarks		
Path Terminator	Waypoint			Cours / Track MAG° (True°)	DIST NM	Turn Direction	Constraints		Nav Spec.	Remarks	
	ID	Flyover	Coordinates				Crossing ALT	Speed			
<b>BALTU1K</b> (BALTU ONE KILO ARRIVAL)				BALTU - DONAD - KV112 - KV113 - KV114 - ROTVA					---		
IF	BALTU	NO	500522.06N 0131935.48E	---	---	---	---	---	RNAV 1	---	
TF	DONAD	NO	500450.93N 0130000.00E	263 (267.77)	12.6	---	---	---	RNAV 1	---	
TF	KV112	NO	500651.26N 0125038.07E	284 (288.47)	6.4	RIGHT	---	---	RNAV 1	---	
TF	KV113	NO	501018.28N 0123757.20E	288 (293.03)	8.9	RIGHT	---	---	RNAV 1	---	
TF	KV114	NO	501214.76N 0123046.22E	288 (292.87)	5.0	---	---	K220-	RNAV 1	---	
TF	ROTVA	NO	501736.71N 0123455.67E	022 (026.39)	6.0	RIGHT	---	---	RNAV 1	IAF	
<b>BEKTO6K</b> (BEKTO SIX KILO ARRIVAL)				BEKTO - KV114 - ROTVA					---		
IF	BEKTO	NO	495756.96N 0124243.36E	---	---	---	---	---	RNAV 1	---	
TF	KV114	NO	501214.76N 0123046.22E	327 (331.80)	16.3	---	---	K220-	RNAV 1	---	
TF	ROTVA	NO	501736.71N 0123455.67E	022 (026.39)	6.0	RIGHT	---	---	RNAV 1	IAF	
<b>GOPSI4K</b> (GOPSI FOUR KILO ARRIVAL)				GOPSI - KV110 - KV111 - ROTVA					---		
IF	GOPSI	NO	503358.70N 0133408.62E	---	---	---	---	---	RNAV 1	---	
TF	KV110	NO	501655.30N 0125327.59E	232 (236.99)	31.1	---	FL100-	---	RNAV 1	---	
TF	KV111	NO	502117.57N 0123721.03E	288 (293.07)	11.2	RIGHT	---	K220-	RNAV 1	---	
TF	ROTVA	NO	501736.71N 0123455.67E	198 (202.86)	4.0	LEFT	---	---	RNAV 1	IAF	
<b>GOPSI5V</b> (GOPSI FIVE VIKTOR ARRIVAL)				GOPSI - KV110 - KV113 - KV114 - ROTVA					---		
IF	GOPSI	NO	503358.70N 0133408.62E	---	---	---	---	---	RNAV 1	---	
TF	KV110	NO	501655.30N 0125327.59E	232 (236.99)	31.1	---	---	---	RNAV 1	---	
TF	KV113	NO	501018.28N 0123757.20E	232 (236.47)	12.0	---	---	---	RNAV 1	---	
TF	KV114	NO	501214.76N 0123046.22E	288 (292.87)	5.0	RIGHT	---	K220-	RNAV 1	---	
TF	ROTVA	NO	501736.71N 0123455.67E	022 (026.39)	6.0	RIGHT	---	---	RNAV 1	IAF	
<b>OKG9K</b> (OKG NINER KILO ARRIVAL)				OKG - KV114 - ROTVA					---		
IF	OKG	NO	500354.53N 0122420.66E	---	---	---	FL110-	---	RNAV 1	---	
TF	KV114	NO	501214.76N 0123046.22E	022 (026.31)	9.3	---	---	K220-	RNAV 1	---	
TF	ROTVA	NO	501736.71N 0123455.67E	022 (026.39)	6.0	---	---	---	RNAV 1	IAF	

## RNAV HOLDING

Holding point	Inbound MAG° (True°)	Outbound MAG° (True°)	Turn Direction	MAX IAS kt	Min.holding altitude FT MSL / FL	Time	Distance NM	Remarks
L L	288 (293.00)	108 (113.00)	LEFT	---	A4500	1 MIN	---	---

