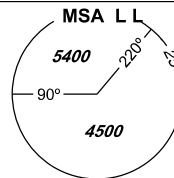


# INSTRUMENT APPROACH CHART - ICAO

AERODROME ELEV 1989  
THR RWY 29 ELEV 1985

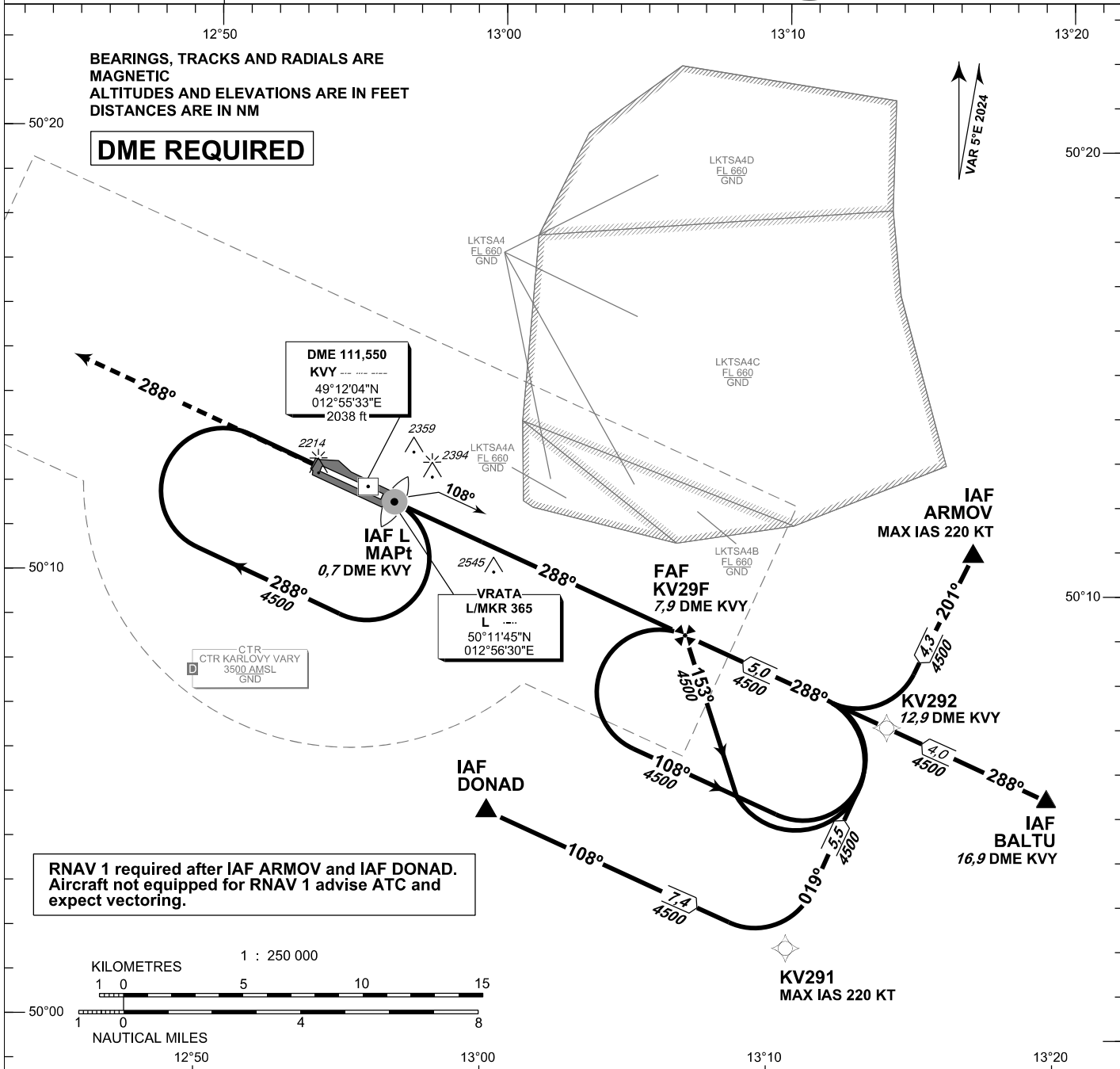
PRAHA RADAR 118,650  
VARY TOWER 121,230  
121,500



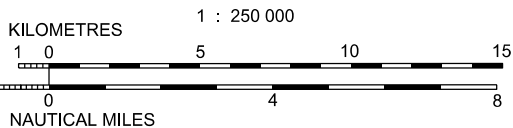
# KARLOVY VARY NDB RWY 29

BEARINGS, TRACKS AND RADIALS ARE MAGNETIC  
ALTITUDES AND ELEVATIONS ARE IN FEET  
DISTANCES ARE IN NM

**DME REQUIRED**



RNAV 1 required after IAF ARMOV and IAF DONAD. Aircraft not equipped for RNAV 1 advise ATC and expect vectoring.

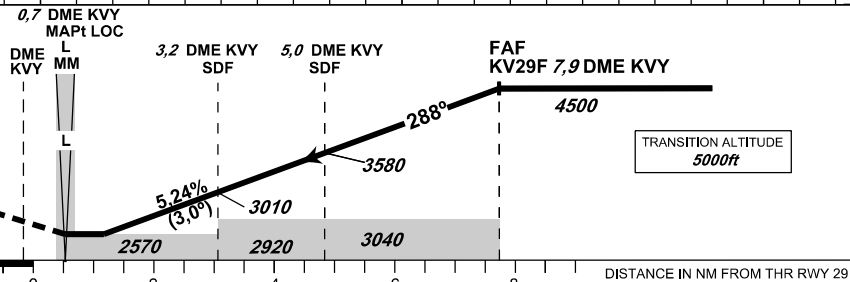


**MISSED APPROACH:**

Climb on track 288° to 5000 ft AMSL, expect vectoring. In case of RCF climb on track 288° to 8,0 NM DME KVVY and turn right to L L in climbing to 5000 ft AMSL.

THR 501157.33N, 0125544.30E  
ELEV 1985

NM FROM THR 29



OCA/OCH		A	B	C	D
Straight-in Approach	ft	2570/580			
Circling (south of AD only)	ft	2520/530	2520/530	2970/980	3160/1170

DME KVVY (NM)		7	6	5	4	3	2
DIST THR (NM)		6,8	5,8	4,8	3,8	2,8	1,8
ALTITUDES (ft)		4210	3900	3580	3260	2940	2620

	kt	80	100	120	140	160	180
FAF - MAPt 7,2 NM	min:sec	5:24	4:20	3:36	3:05	2:42	2:24
Rate of descent (5,24%)	ft/min	420	530	640	740	850	960

change: removal of LKD14

Timing is not authorized for defining the MAPt.

Recommended coding:

Path Terminator	Waypoint				Cours / Track MAG° (True°)	DIST NM	Turn Direction	Constraints		Nav Spec.	Remarks
	ID	Type	Flyover	Coordinates				Level	Speed		
via <b>ARMOV</b>											
IF	ARMOV	IAF	NO	501050.76N 0131650.52E	---	---	---	A4500+	K220-	RNAV 1	---
TF	KV292	IF	NO	500656.23N 0131356.91E	201 (205.46)	4.3	---	---	---	RNAV 1	---
via <b>DONAD</b>											
IF	DONAD	IAF	NO	500450.93N 0130000.00E	---	---	---	A4500+	---	RNAV 1	---
TF	KV291	---	NO	500155.29N 0131035.25E	108 (113.17)	7.4	---	---	K220-	RNAV 1	---
TF	KV292	IF	NO	500656.23N 0131356.91E	019 (023.31)	5.5	LEFT	---	---	RNAV 1	---

## APPROACH NDB RWY 29

Descent angle (°)	3.00				
Type	IF	FAF	SDF 1	SDF 2	MAPt
Fix	KV292 (12.9 DME KVY)	KV29F (7.9 DME KVY)	(5.0 DME KVY)	(3.2 DME KVY)	L/MRK L (0.7 DME KVY)
Fix coordinates	500656.23N 0131356.91E	500854.77N 0130648.58E	501003.17N 0130240.30E	501045.62N 0130005.83E	501144.84N 0125630.07E
Fix formation bearing (True°)	113.11 NDB L	113.11 NDB L	113.12 NDB L	113.12 NDB L	---
Fix formation distances (NM)	12.89 DME KVY	7.89 DME KVY	5.00 DME KVY	3.20 DME KVY	0.68 DME KVY

