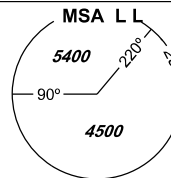


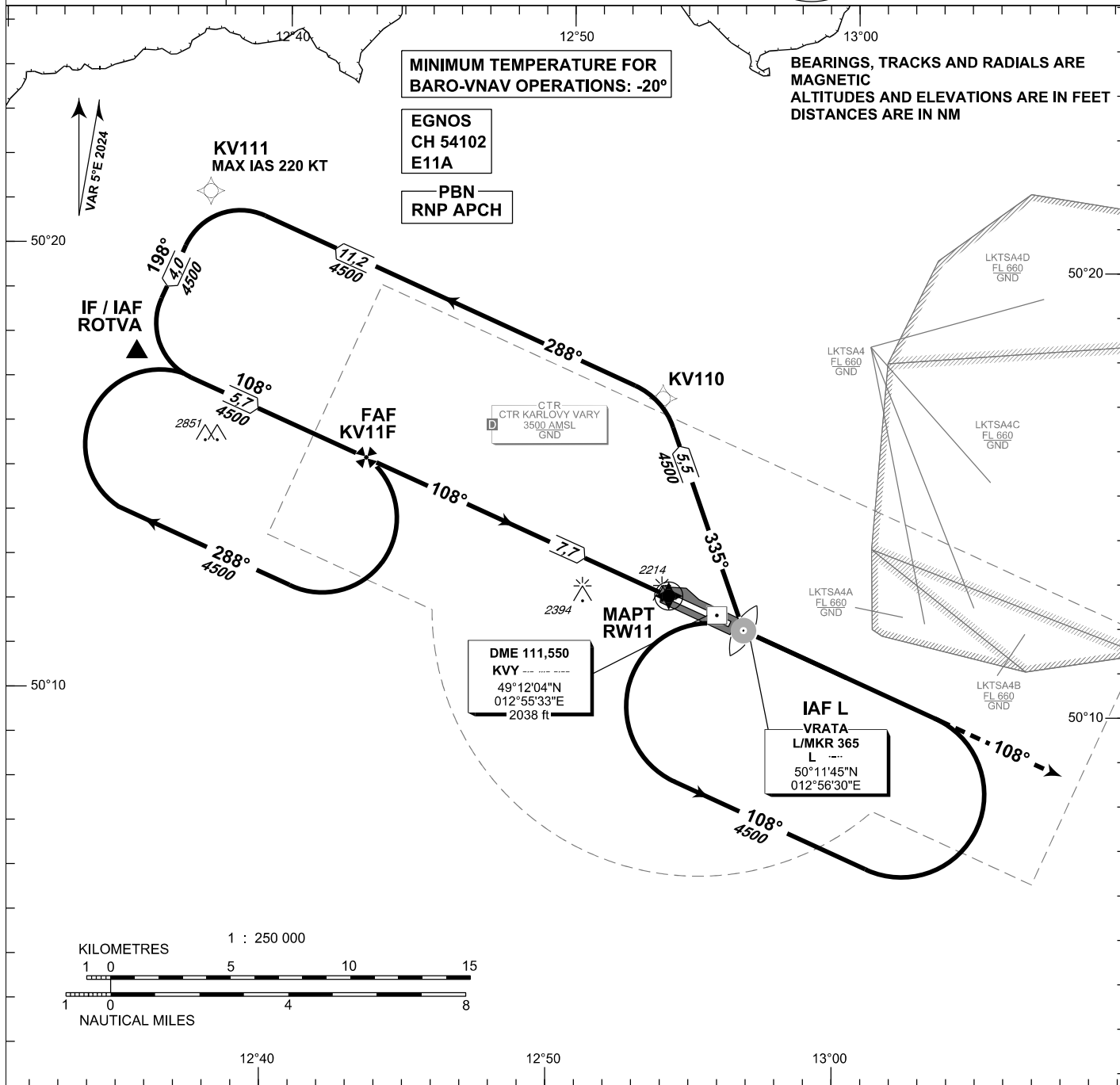
INSTRUMENT APPROACH CHART - ICAO

AERODROME ELEV 1989
THR RWY 11 ELEV 1988

PRAHA RADAR 118,650
VARY TOWER 121,230
121,500



KARLOVY VARY RNP RWY 11



MINIMUM TEMPERATURE FOR BARO-VNAV OPERATIONS: -20°

BEARINGS, TRACKS AND RADIALS ARE MAGNETIC
ALTITUDES AND ELEVATIONS ARE IN FEET
DISTANCES ARE IN NM

EGNOS
CH 54102
E11A

PBN
RNP APCH

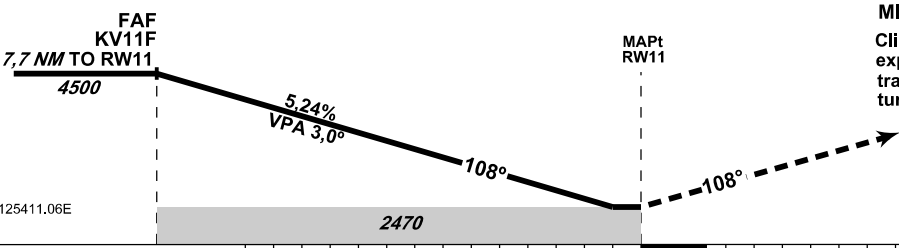
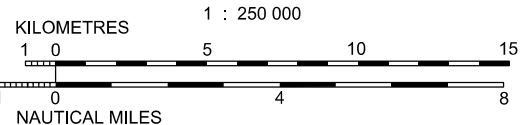
VAR 5° E 2024

KV111
MAX IAS 220 KT

CTR KARLOVY VARY
3500 AMSL
GND

DME 11,550
KVY
49°12'04"N
012°55'33"E
2038 ft

IAF L
VRATA
L/MKR 365
L
50°11'45"N
012°56'30"E



MISSED APPROACH:
Climb on track 108° to 5000 ft AMSL, expect vectoring. In case of RCF climb on track 108° to 8.0 NM DME KVY and turn right to L L in climbing to 5000 ft AMSL.

TRANSITION ALTITUDE 5000ft
TCH 50

THR 501222.85N, 0125411.06E
ELEV 1988

NM FROM THR 11 6 4 2 0 2 4 6 DISTANCE IN NM FROM THR RWY 11

OCA/OCH		A	B	C	D
LNAV	ft	2470/480			
LNAV/VNAV	ft	2380/392			
LPV	ft	2349/361	2361/373	2369/381	2380/392
Circling (south of AD only)	ft	2520/530	2520/530	2970/980	3160/1170

DIST THR (MAPt)	7	6	5	4	3	2
ALTITUDES ft	4260	3940	3630	3310	2990	2670

	kt	80	100	120	140	160	180
FAF - MAPt 7.7 NM	min:sec	5:48	4:39	3:52	3:19	2:54	2:35
Rate of descent (5.24%)	ft/min	420	530	640	740	850	960

change: removal of LKD14

Timing is not authorized for defining the MAPt.

Recommended coding:

Path Terminator	Waypoint				Cours / Track MAG° (True°)	DIST NM	Turn Direction	Constraints		Nav Spec.	Remarks
	ID	Type	Flyover	Coordinates				Level	Speed		
via ROTVA											
IF	ROTVA	IF/IAF	NO	501736.71N 0123455.67E	---	---	---	A4500+	---	RNP APCH	---
TF	KV11F	FAF	NO	501523.91N 0124305.90E	108 (112.92)	5.7	---	A4500+	---	RNP APCH	---
TF	RW11	MAPT	YES	501222.85N 0125411.06E	108 (112.92)	7.7	---	---	---	RNP APCH	---
CA	---	---	---	---	108 (112.92)	17.9	---	A5000+	---	RNP APCH	---
via L L											
IF	L L	IAF	NO	501144.84N 0125630.07E	---	---	---	A4500+	---	RNP APCH	---
TF	KV110	---	NO	501655.30N 0125327.59E	335 (339.36)	5.5	---	---	---	RNP APCH	---
TF	KV111	---	NO	502117.57N 0123721.03E	288 (293.07)	11.2	LEFT	---	K220-	RNP APCH	---
IF	ROTVA	IF	NO	501736.71N 0123455.67E	198 (202.86)	4.0	LEFT	A4500+	---	RNP APCH	---
TF	KV11F	FAF	NO	501523.91N 0124305.90E	108 (112.92)	5.7	LEFT	A4500+	---	RNP APCH	---
TF	RW11	MAPT	YES	501222.85N 0125411.06E	108 (112.92)	7.7	---	---	---	RNP APCH	---
CA	---	---	---	---	108 (112.92)	17.9	---	A5000+	---	RNP APCH	---

RNAV HOLDING

Holding point	Inbound MAG° (True°)	Outbound MAG° (True°)	Turn Direction	MAX IAS kt	Min. holding altitude FT MSL / FL	Time	Distance NM	Remarks
L L	288 (293.00)	108 (113.00)	LEFT	---	A4500	1 MIN	---	---
KV11F	108 (113.00)	288 (293.00)	RIGHT	---	A4500	1 MIN	---	---

SBAS FAS Data Block

Input Data

Operation Type	0
SBAS Provider	1 (EGNOS)
Airport Identifier	LKKV
Runway	11
Runway Letter	0 (None)
Approach Performance Designator	0
Route Indicator	
Reference Path Data Selector	0
Reference Path Identifier	E11A
LTP/FTP Latitude	501222.8455N
LTP/FTP Longitude	0125411.0575E
LTP/FTP Ellipsoidal Height (metres)	652.7
FPAP Latitude	501157.3265N
Delta FPAP Latitude (seconds)	-25.5190
FPAP Longitude	0125544.3045E
Delta FPAP Longitude (seconds)	93.2470
Threshold Crossing Height	50.0
TCH Units Selector	0 (feet)
Glidepath Angle (degrees)	3.00
Course Width (metres)	105.00
Length Offset (metres)	0
HAL (metres)	40.0
VAL (metres)	50.0

Output Data

Data Block	10 16 0B 0B 0C 0B 00 00 01 31 31 05 7B D5 8B 15 E3 92 89 05 7F 2D A2 38 FF 7E D8 02 F4 01 2C 01 64 00 C8 FA 6B 14 1B 35
Calculated CRC Value	6B141B35

Required Additional Data

ICAO Code	LK
LTP/FTP Orthometric Height (metres)	605.8

