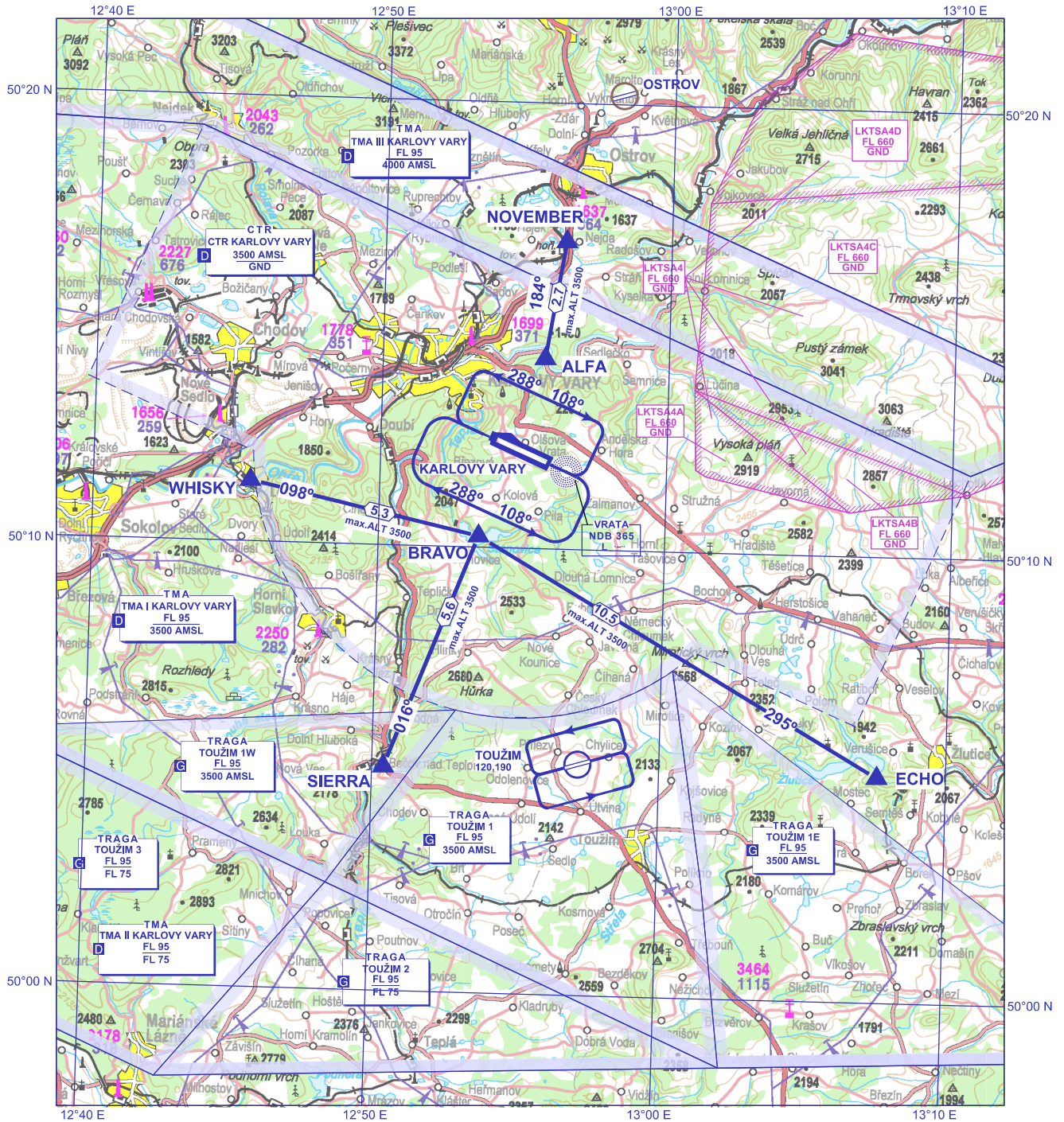


AD ELEV 1989 ft/606 m

BEARINGS ARE MAGNETIC
ALT AND ELEV IN FEET
DISTANCES ARE IN NM

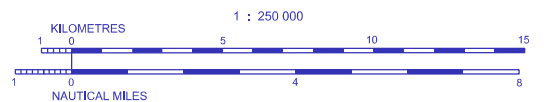
PRAGA RADAR	118,650
VARY TOWER	121,230
KARLOVY VARY ATIS	127,640
EMERGENCY FREQ	121,500

VFR Arrivals and Departures Chart KARLOVY VARY



change: removal of LKD14

ALFA	50° 14' 16" N 012° 55' 40 E	NOVEMBER	50° 16' 54" N 012° 56' 19 E
BRAVO	50° 10' 15" N 012° 53' 30 E	SIERRA	50° 05' 02" N 012° 50' 24 E
ECHO	50° 05' 03" N 013° 07' 36E	WHISKY	50° 11' 22" N 012° 45' 29E



1502 Elevation of Top (AMSL) of obstacle
499 Height of Obstacle (AGL)

Arrivals	Waypoint sequence
ECHO 1 NOVEMBER 1 SIERRA 1 WHISKY 1	ECHO - BRAVO NOVEMBER - ALFA SIERRA - BRAVO WHISKY - BRAVO
Departures	Waypoint sequence
ECHO 1	After departure from RWY 11 - Right turn DCT ECHO After departure from RWY 29 - Left turn DCT ECHO
NOVEMBER 1	After departure from RWY 11 - Left turn DCT NOVEMBER After departure from RWY 29 - Right turn DCT NOVEMBER
SIERRA 1	After departure from RWY 11 - Right turn DCT SIERRA After departure from RWY 29 - Left turn DCT SIERRA
WHISKY 1	After departure from RWY 11 - Right turn DCT WHISKY After departure from RWY 29 - Left turn DCT WHISKY

