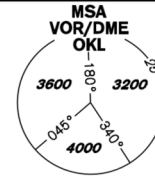


# INSTRUMENT APPROACH CHART - ICAO

**AERODROME ELEV 1234**  
**THR RWY 24 ELEV 1158**  
**OCH RELATED TO THR RWY 24**

**PRAHA RADAR 127,580**  
**RUZYŇŔ RADAR 119,010**  
**SUPPLEMENTARY FREQ. 136,080**  
**121,500**  
**RUZYŇŔ TOWER 134,560**  
**SUPPLEMENTARY FREQ. 118,110**  
**121,500**



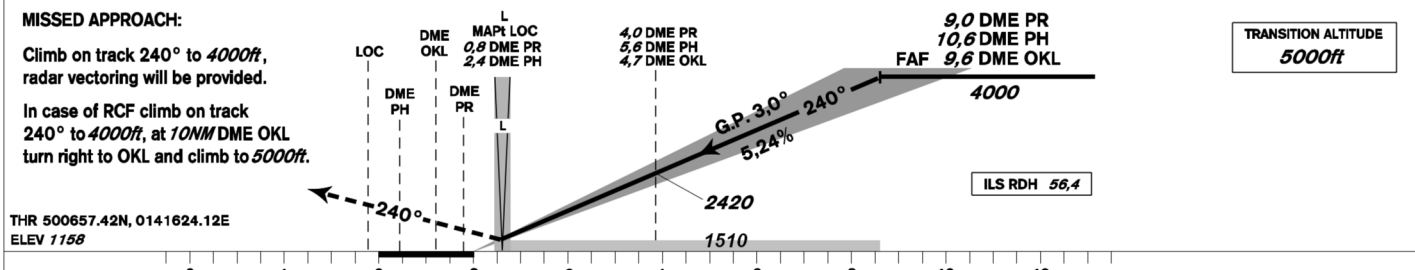
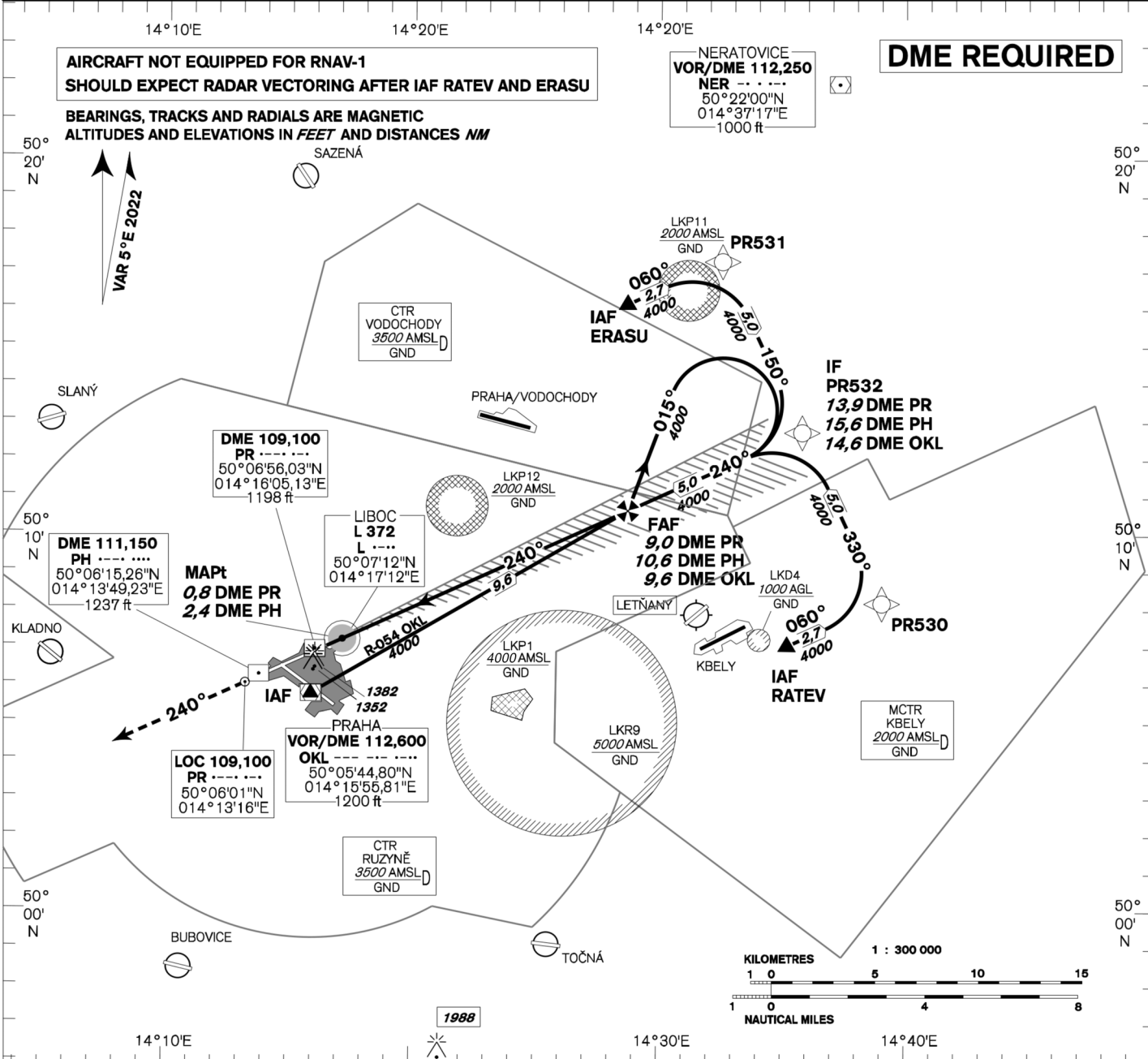
# PRAHA/Ruzyně ILS RWY 24

**AIRCRAFT NOT EQUIPPED FOR RNAV-1 SHOULD EXPECT RADAR VECTORING AFTER IAF RATEV AND ERASU**

**BEARINGS, TRACKS AND RADIALS ARE MAGNETIC**  
**ALTITUDES AND ELEVATIONS IN FEET AND DISTANCES NM**

**DME REQUIRED**

**NERATOVICE VOR/DME 112,250**  
**NER --- ---**  
**50°22'00"N**  
**014°37'17"E**  
**1000 ft**



OCA/OCH		A	B	C	D
Straight-in Approach	Cat I	ft 1304 / 146	1314 / 156	1324 / 166	1335 / 177
	Cat II	ft 1217 / 59	1226 / 68	1235 / 77	1249 / 91
	LOC	ft 1510 / 350			
Circling		see the circling approach chart			

	kt	80	100	120	140	160	180
FAF - MAPt 8,2 NM	min:sec	6:09	4:55	4:06	3:31	3:04	2:44
Rate of descent (5,24%)	ft/min	420	530	640	740	850	960

CAT III approved.  
 change: horizontal and vertical limits of LKP1  
 Timing is not authorized for defining the MAPt.