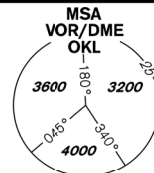


INSTRUMENT APPROACH CHART - ICAO

AERODROME ELEV **1234**
 THR RWY 30 ELEV **1232**
 OCH RELATED TO THR RWY 30

PRAHA RADAR 127,580
 RUZYNĚ RADAR 119,010
 SUPPLEMENTARY FREQ 136,080
 121,500
 RUZYNĚ TOWER 134,560
 SUPPLEMENTARY FREQ 118,110
 121,500



PRAHA/Ruzyně ILS RWY 30

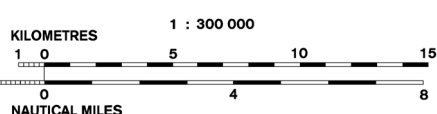
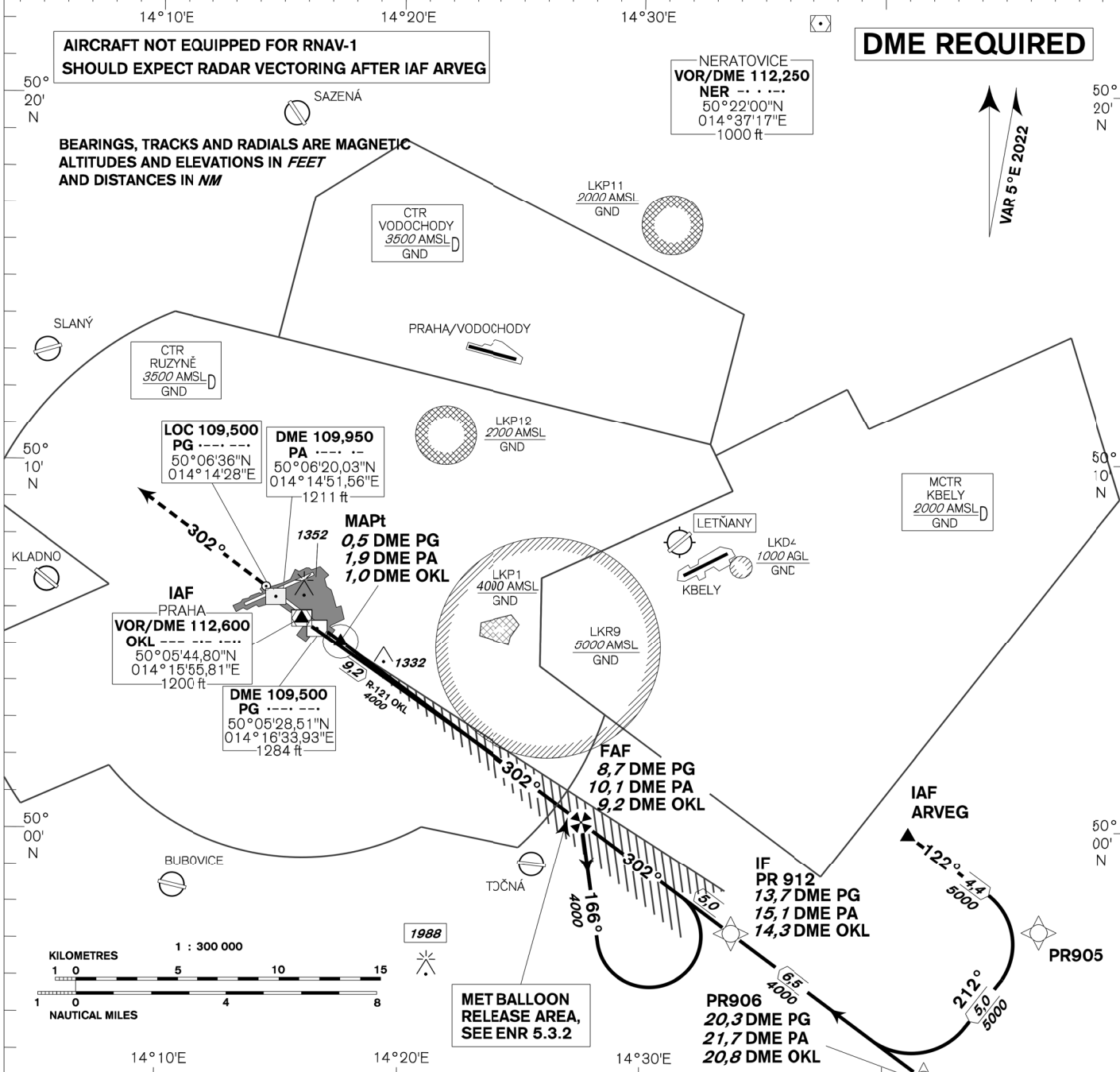
AIRCRAFT NOT EQUIPPED FOR RNAV-1 SHOULD EXPECT RADAR VECTORED AFTER IAF ARVEG

DME REQUIRED

NERATOVICE VOR/DME 112,250
 NER ---
 50°22'00"N
 014°37'17"E
 1000 ft



BEARINGS, TRACKS AND RADIALS ARE MAGNETIC
 ALTITUDES AND ELEVATIONS IN FEET
 AND DISTANCES IN NM

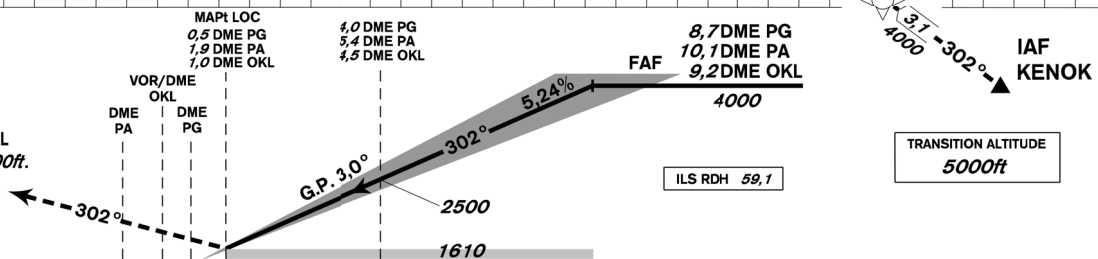


MISSED APPROACH:

Climb on track 302° to 4000ft, radar vectoring will be provided.

In case of RCF climb on track 302° to 4000ft, at 10NM DME OKL turn right to OKL and climb to 5000ft.

THR 500525.68N, 0141654.02E
 ELEV 1232



OCA/OCH		A	B	C	D
Straight - in Approach	Cat I	ft 1372 / 140	1380 / 148	1390 / 158	1401 / 169
	LOC	ft 1610 / 370			
Circling		see the circling approach chart			

		9	8	7	6	5	4	3	2	1
DME PG	NM	9	8	7	6	5	4	3	2	1
DME PA	NM	10,4	9,4	8,4	7,4	6,4	5,4	4,4	3,4	2,4
DME OKL	NM	9,5	8,5	7,5	6,5	5,5	4,5	3,5	2,5	1,5
DIST THR	NM	8,8	7,8	6,8	5,8	4,8	3,8	2,8	1,8	0,8
ALTITUDES	ft	4090	3780	3460	3140	2820	2500	2180	1860	1540

	kt	80	100	120	140	160	180
FAF - MAPt 8,2 NM	min:sec	6:11	4:57	4:07	3:32	3:05	2:45
Rate of descent	ft/min	420	530	640	740	850	960

Timing is not authorized for defining the MAPt.

change: horizontal and vertical limits of LKP1

