

INSTRUMENT APPROACH CHART - ICAO

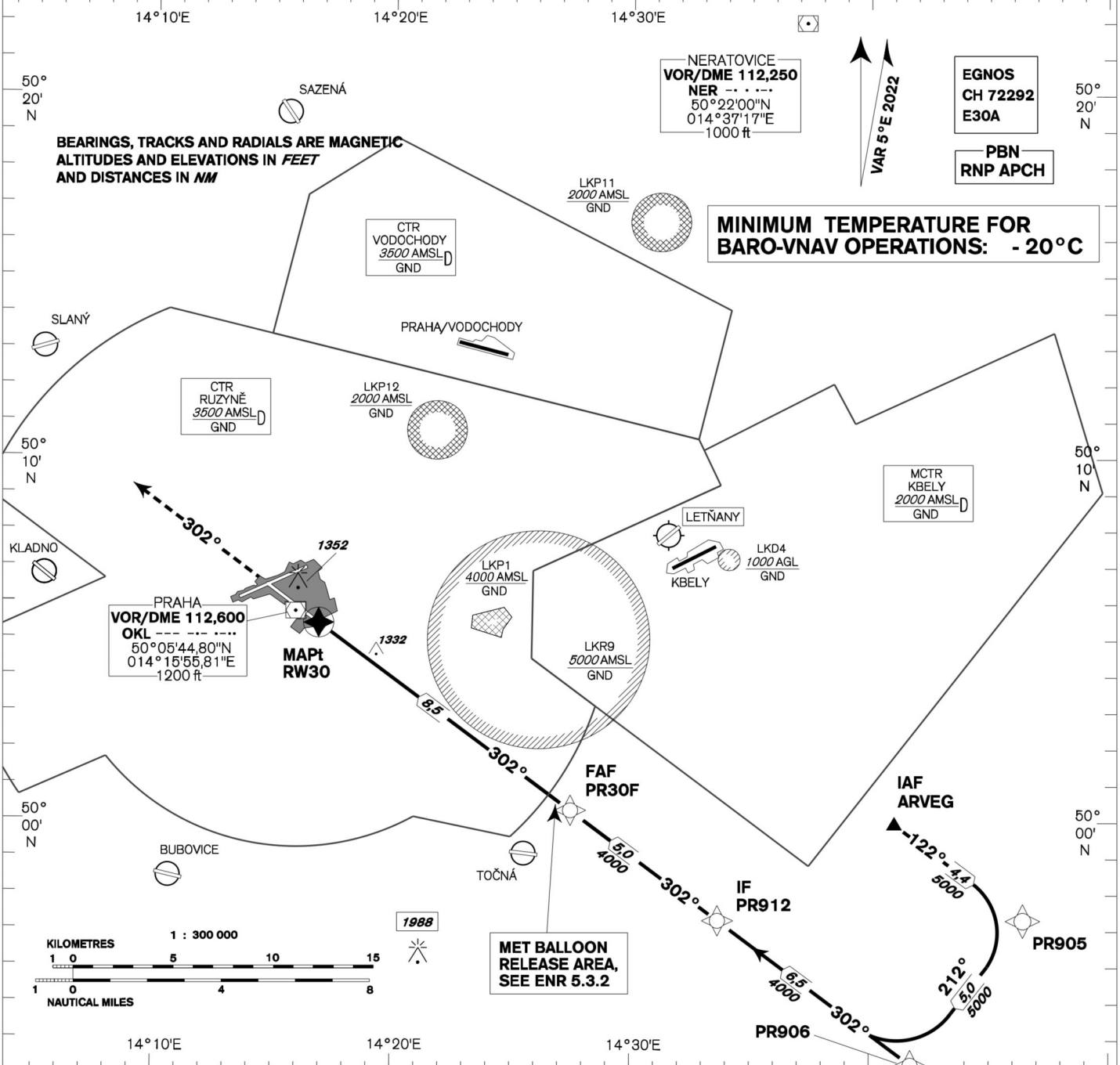
AERODROME ELEV 1234
THR RWY 30 ELEV 1232

OCH RELATED TO THR RWY 30

PRAHA RADAR 127,580
RUZYŇĚ RADAR 119,010
SUPPLEMENTARY FREQ 136,080
121,500

RUZYŇĚ TOWER 134,560
SUPPLEMENTARY FREQ 118,110
121,500

PRAHA/Ruzyňě RNP RWY 30



MISSED APPROACH:
Climb on track 302° to 4000ft, radar vectoring will be provided.
In case of RCF climb on track 302° to 4000ft, at 10NM DME OKL turn right to OKL and climb to 5000ft.

THR 500525.68N, 0141654.02E
ELEV 1232

1988

TRANSITION ALTITUDE 5000ft

RDH 49.2 ft

OCA/OCH	A	B	C	D	
LNAV	ft	1620 / 380			
LNAV / VNAV	ft	1529 / 297			
LPV	ft	1432 / 200			
Circling		see the circling approach chart			

DIST THR (MAPt) NM	9	8	7	6	5	4	3	2	1
ALTITUDES ft	4150	3830	3510	3190	2870	2550	2240	1920	1600
	kt	80	100	120	140	160	180		
FAF - MAPt 8,5 NM	min:sec	6:25	5:07	4:16	3:40	3:12	2:51		
Rate of descent	ft/min	420	530	640	740	850	960		

Timing is not authorized for defining the MAPt.

change: horizontal and vertical limits of LKP1

Posloupnost traťových bodů / Way point sequence

Od / From IAF ARVEG		
ARVEG	IAF	fly-by
PR905		fly-by
PR906		fly-by
PR912	IF	fly-by
PR30F	FAF	fly-by
RW30	MAPt	fly-over

Od / From IAF KENOK		
KENOK	IAF	fly-by
PR906		fly-by
PR912	IF	fly-by
PR30F	FAF	fly-by
RW30	MAPt	fly-over

Seznam traťových bodů / Way point list	
PR905	49 57 17,86 N 014 46 25,19 E
KENOK	49 51 26,01 N 014 45 34,00 E
PR906	49 53 19,27 N 014 41 43,75 E
PR912	49 57 14,58 N 014 33 44,54 E
PR30F	50 00 18,07 N 014 27 29,23 E
RW30	50 05 25,68 N 014 16 54,02 E
ARVEG	49 59 56,37 N 014 41 02,25 E

SBAS FAS Data Block

Vstupní data / Input Data

Parametry / Parameters	Hodnoty / Values
Operation Type	0
SBAS Provider	1 (EGNOS)
Airport Identifier	LKPR
Runway	30
Runway Letter	0 (None)
Approach Performance Designator	0
Route Indicator	
Reference Path Data Selector	0
Reference Path Identifier	E30A
LTP/FTP Latitude	500525.6800N
LTP/FTP Longitude	0141654.0200E
LTP/FTP Ellipsoidal Height (metres)	421.2
FPAP Latitude	500628.8400N
Delta FPAP Latitude (seconds)	63.1600
FPAP Longitude	0141443.3200E
Delta FPAP Longitude (seconds)	-130.7000
Threshold Crossing Height	49.2
TCH Units Selector	0 (feet)
Glidepath Angle (degrees)	3.00
Course Width (metres)	105.00
Length Offset (metres)	0
HAL (metres)	40.0
VAL (metres)	35.0

Výstupní data / Output Data

Parametry / Parameters	Hodnoty / Values
Data Block	10 12 10 0B 0C 1E 00 00 01 30 33 05 60 1A 7F 15 08 08 21 06 74 24 70 ED 01 E8 02 FC EC 01 2C 01 64 00 C8 AF 5A B9 20 0F
Calculated CRC Value	5AB9200F

Required Additional Data (not CRC wrapped)

Parametry / Parameters	Hodnoty / Values
ICAO Code	LK
LTP/FTP Orthometric Height (metres)	375.5

