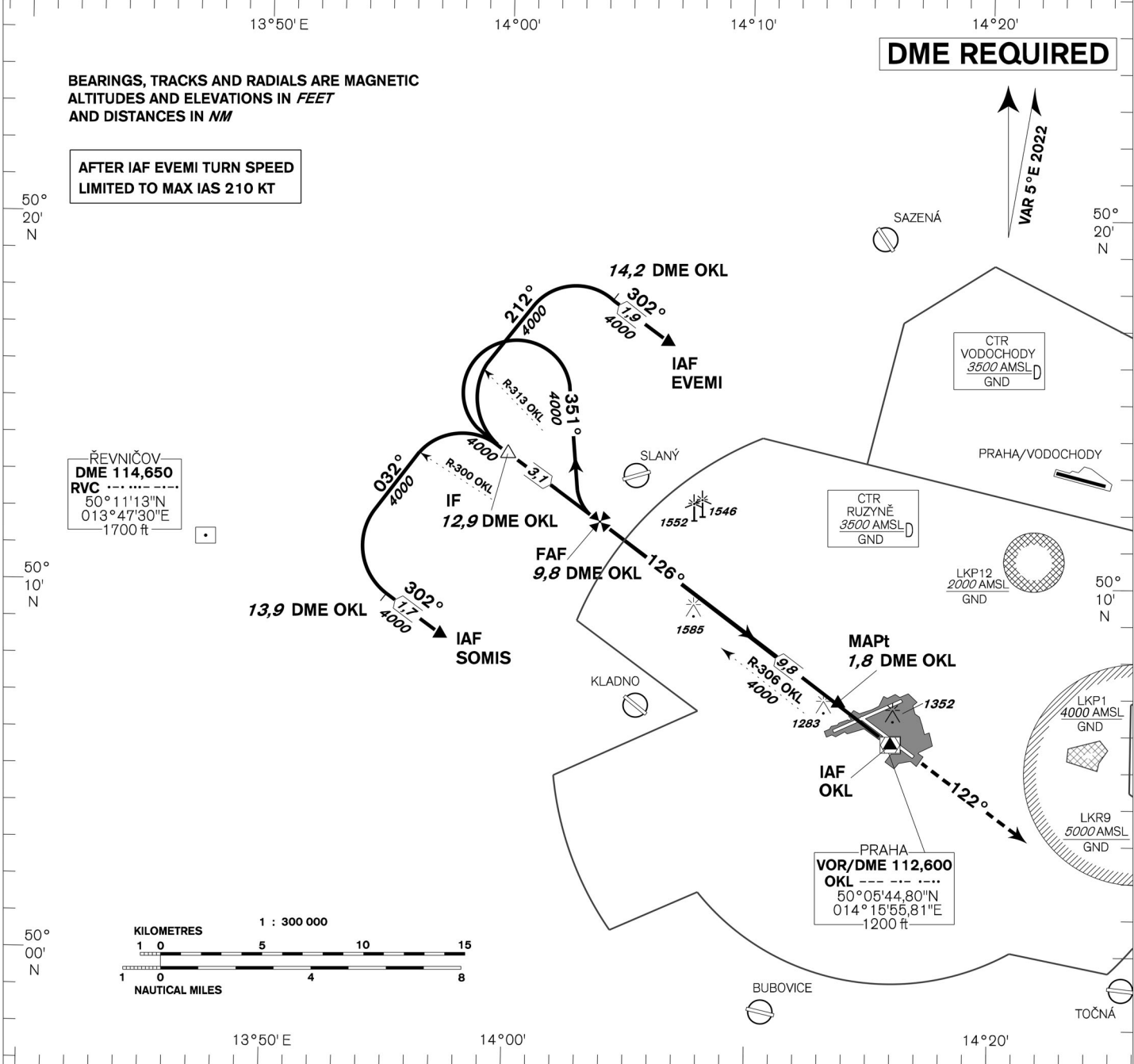


<b>INSTRUMENT APPROACH CHART - ICAO</b>	AERODROME ELEV <b>1234</b> THR RWY 12 ELEV <b>1160</b> OCH RELATED TO THR RWY 12	PRAHA RADAR 127,580 RUZYŇĚ RADAR 119,010 SUPPLEMENTARY FREQ 136,080 121,500 RUZYŇĚ TOWER 134,560 SUPPLEMENTARY FREQ 118,110 121,500	<div style="text-align: center;"> </div> <div style="text-align: right; font-size: 1.2em; font-weight: bold;">                 PRAHA/Ruzyně                  VOR                  RWY 12             </div>
---	--	---	---



**MISSED APPROACH:**  
 Climb on track 122° to 4000ft, radar vectoring will be provided.  
 In case of RCF climb on track 122° to 4000ft, at 10NM DME OKL turn right to OKL and climb to 5000ft.

THR 500628,84N 0141443,32E ELEV 1160	10	8	6	4	2	0	2	4	6	8	10
OCA/OCH	A	B	C	D							
Straight-in Approach	ft	1530 / 370									
Circling	see the circling approach chart										

DME OKL NM	10	9	8	7	6	5	4	3
THR DIST NM	8,9	7,9	6,9	5,9	4,9	3,9	2,9	1,9
ALTITUDES ft	4050	3730	3420	3100	2780	2460	2140	1820

kt	80	100	120	140	160	180
FAF - MAPt 8,0 NM min:sec	6:00	4:48	4:00	3:26	3:00	2:40
Rate of descent ft/min	420	530	640	740	850	950

Timing is not authorized for defining the MAPt.

change: horizontal and vertical limits of LKP1