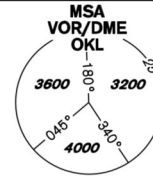


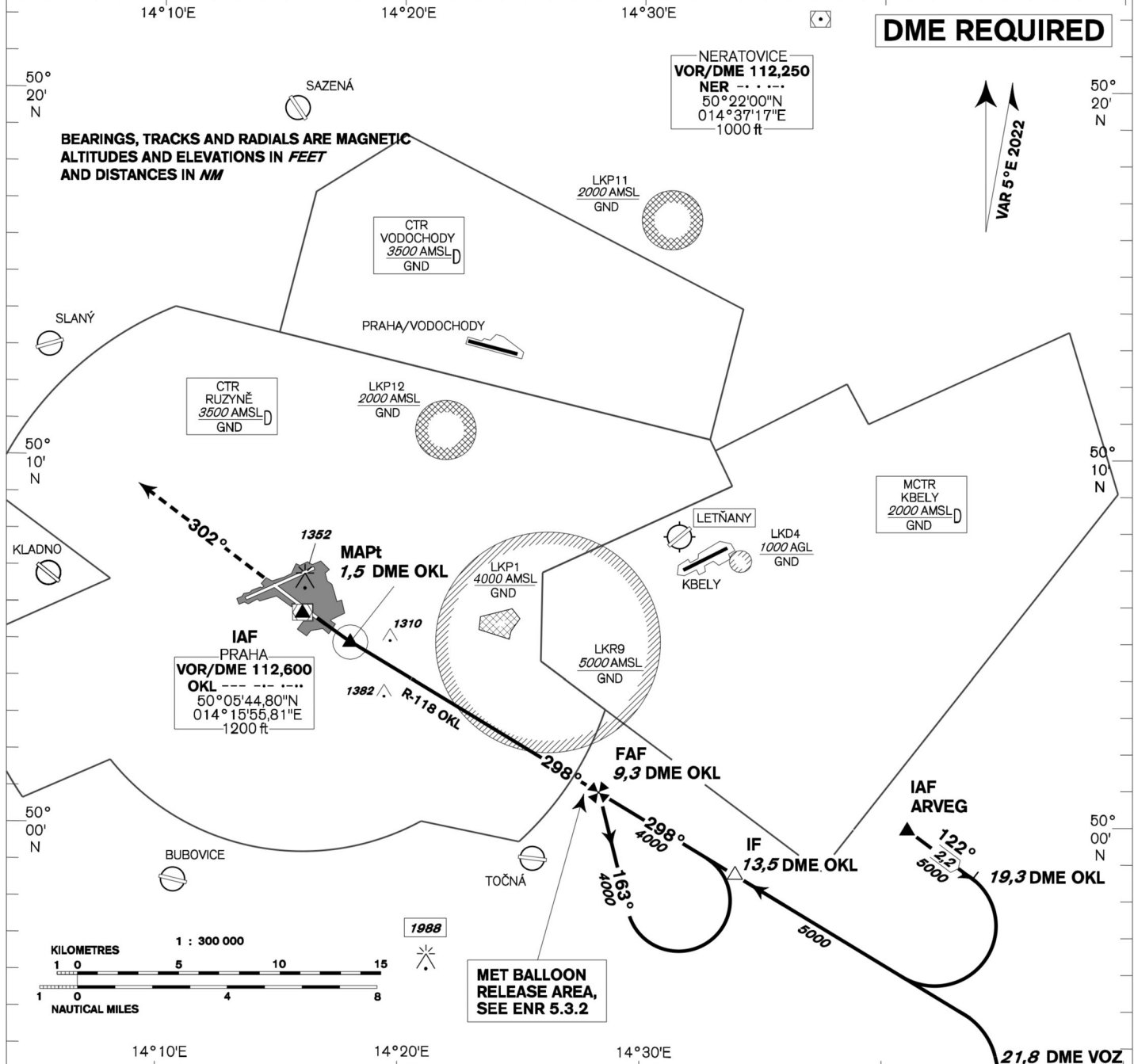
INSTRUMENT APPROACH CHART - ICAO

AERODROME ELEV **1234**
 THR RWY 30 ELEV **1232**
 OCH RELATED TO THR RWY 30

PRAHA RADAR 127,580
 RUZYŇĚ RADAR 119,010
 SUPPLEMENTARY FREQ. 136,080
 121,500
 RUZYŇĚ TOWER 134,560
 SUPPLEMENTARY FREQ. 118,110
 121,500



PRAHA/Ruzyňě VOR RWY 30

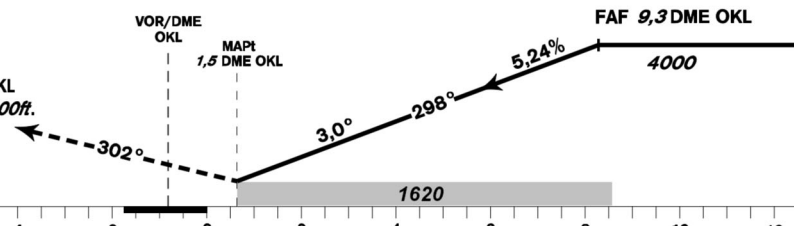


MISSED APPROACH:

Climb on track 302° to 4000ft, radar vectoring will be provided.

In case of RCF climb on track 302° to 4000ft, at 10NM DME OKL turn right to OKL and climb to 5000ft.

THR 500525.68N, 0141654.02E
 ELEV 1232



TRANSITION ALTITUDE 5000ft

OCA/OCH	A	B	C	D
Straight-in Approach	ft	1620 / 380		
Circling	see the circling approach chart			

DME OKL	NM	10	9	8	7	6	5	4	3	2
THR DIST	NM	9,3	8,3	7,3	6,3	5,3	4,3	3,3	2,3	1,3
ALTITUDES	R	4240	3920	3610	3290	2970	2650	2330	2010	1700
FAF - MAPt	kt	80	100	120	140	160	180			
	min:sec	5:50	4:40	3:53	3:20	2:55	2:36			
Rate of descent	ft/min	420	530	640	740	850	960			

Timing is not authorized for defining the MAPt.

change: horizontal and vertical limits of LKP1