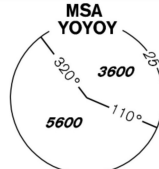


INSTRUMENT APPROACH CHART - ICAO

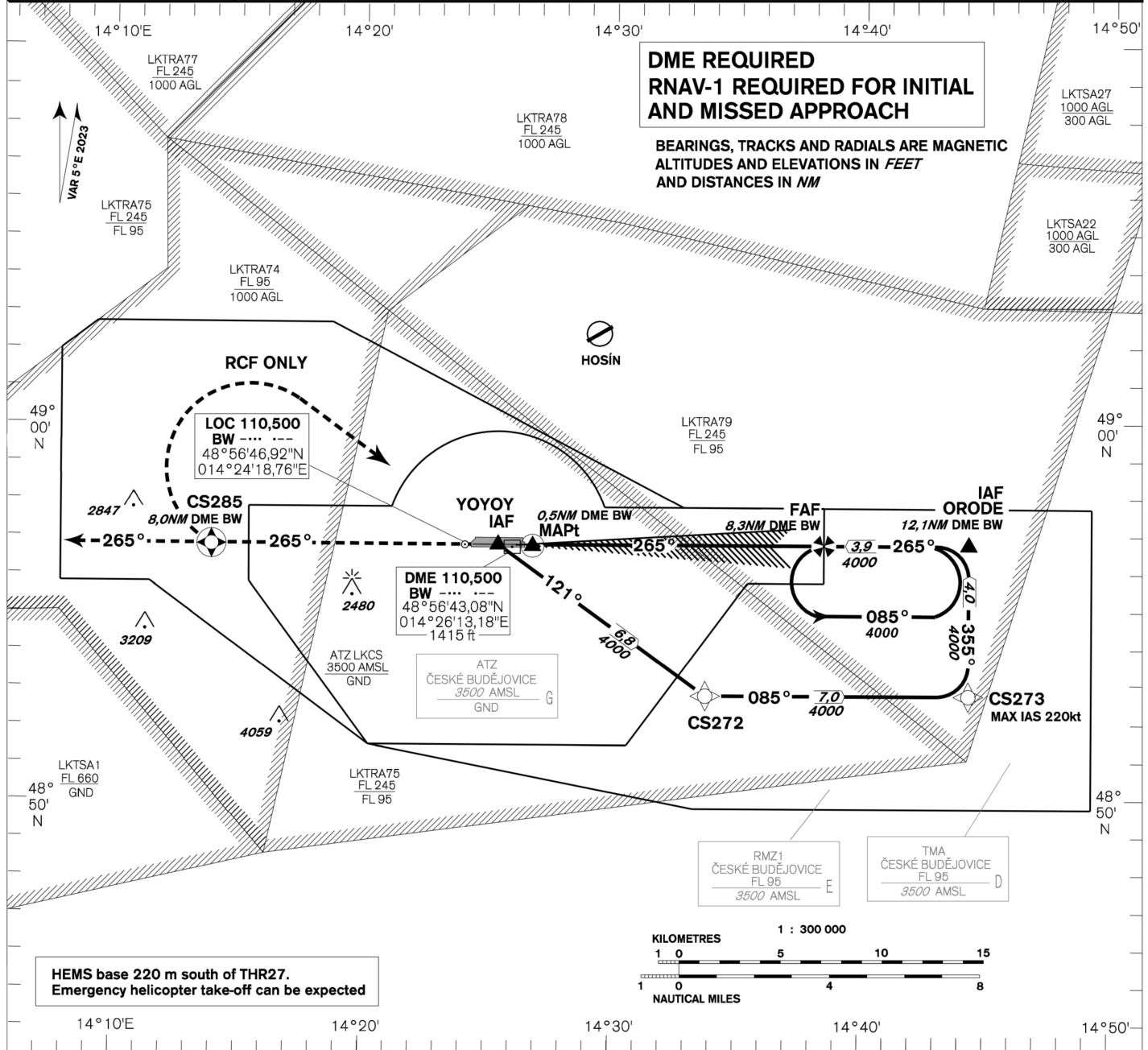
AERODROME ELEV 1417 ft
THR RWY 09 ELEV 1356 ft
OCH RELATED TO THR RWY 27

PRAHA RADAR 118,650
BUDĚJOVICE INFORMATION 135,930
PRAHA FIC 126,100
EMERGENCY FREQ. 121,500

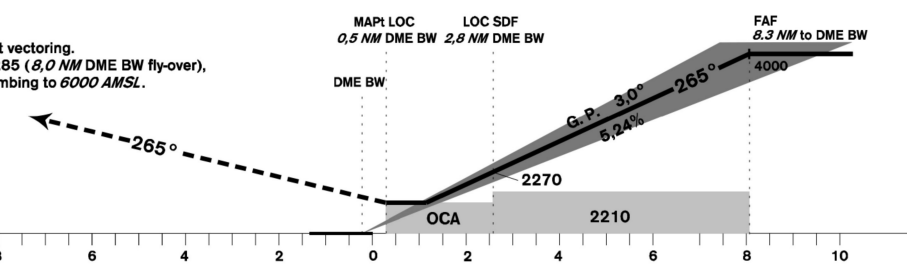
MSA YOYOY


ČESKÉ BUDĚJOVICE ILS

RWY 27



MISSED APPROACH:
 Climb on track 265° to 6000 AMSL, expect vectoring.
 In case of RCF climb on track 265° to CS285 (8,0 NM DME BW fly-over), turn right to YOYOY (max IAS 200kt), in climbing to 6000 AMSL.



THR 485646,99N 0142626,00E
ELEV 1356

MAPt LOC 0,5 NM DME BW 2,8 NM DME BW
LOC SDF 2,8 NM DME BW
FAF 8,3 NM to DME BW

TRANSITION ALTITUDE 5000ft
RDH 50,2 ft

OCA / OCH	A	B	C	D
CAT I	ft 1848/492	1861/504	1869/512	1879/523
LOC	ft 2020/670			
CIRCLING (south of AD only)	ft 2070/-	2170/-	2880/-	2920/-

OCA / OCH	A	B	C	D
CAT I	ft 1556/200	1563/207	1571/215	1582/225
LOC	ft 1680/320			
CIRCLING (south of AD only)	ft 2070/-	2170/-	2880/-	2920/-

DIST BW NM	8	7	6	5	4	3	2	1
DIST THR NM	7,86	6,86	5,86	4,86	3,86	2,86	1,86	0,86
ALTITUDES ft	3910	3590	3270	2950	2640	2320	2000	1680

FAF - MAPt 7,8 NM	kt	80	100	120	140	160	180
min:sec	5:51	4:40	3:54	3:20	2:55	2:36	
Rate of descent (5,24%)	ft/min	420	530	640	740	850	960

Timing is not authorized for defining the MAPt.

Change: removal of LKD11