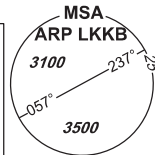


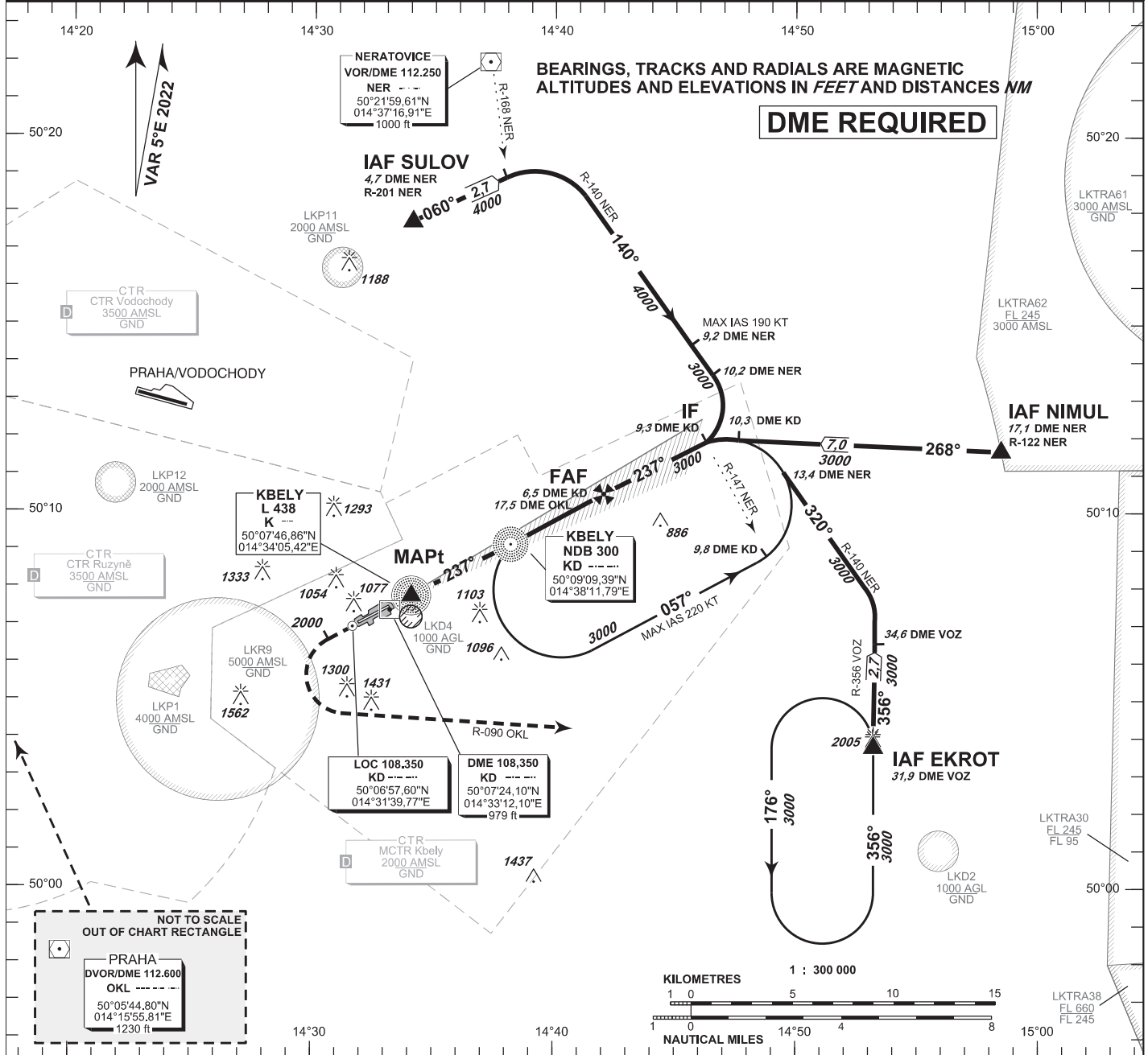
INSTRUMENT APPROACH CHART - ICAO

AERODROME ELEV **939**
 THR RWY 06 ELEV **939**
 THR RWY 24 ELEV **916**
 ARP **919**
 OCH RELATED TO THR RWY 24

KBELY RADAR 124,680 291,050 reserve
 KBELY PRECISION 126,760 123,300 reserve
 315,000 reserve
 KBELY TOWER 120,880 134,730 reserve



KBELY ILS RWY 24

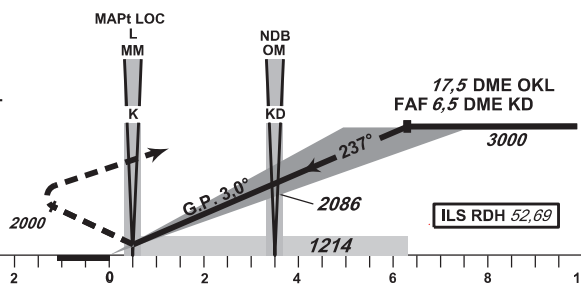


NOT TO SCALE
 OUT OF CHART RECTANGLE

PRAHA DVOR/DME 112.600 OKL 50°05'44,80"N 014°15'55,81"E 1230 ft

MISSED APPROACH:
 Climb to 2000ft MAX 2,7NM
 KD DME/MNM 8,7NM OKL DME,
 turn left intercept radial R 090 OKL
 then climb to 3000ft continue to EKROT

THR 500731.93N, 0143321.70E
 ELEV 916



TRANSITION ALTITUDE 5000ft

MISSED APPROACH:
 to IAS ≤ 185 kt min. bank angle 15°
 to IAS ≤ 230 kt min. bank angle 20°
 IAS MAX = 230 KT

OCA/OCH		A	B	C	D
Straight - in Approach	Cat I	ft 1115 / 197	1119 / 200	1128 / 210	1138 / 220
	LOC	ft 1214 / 296			
Circling (South only)		ft 1345 / -	1656 / -	1971 / -	-

DME KD	NM	6,5	5,0	4,0	3,0	2,0	1,0	0,5
ALTITUDES	ft	3000	2500	2241	1912	1607	1286	1115

	kt	60	90	120	150	180
FAF - MAPt 5,8 NM	min:sec	5:49	3:53	2:55	2:20	1:57
Rate of descent	ft / min	315	470	640	790	960

Timing is not authorized for defining the MAPt

change: horizontal and vertical limits of LKP1