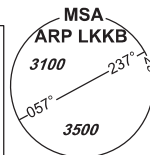


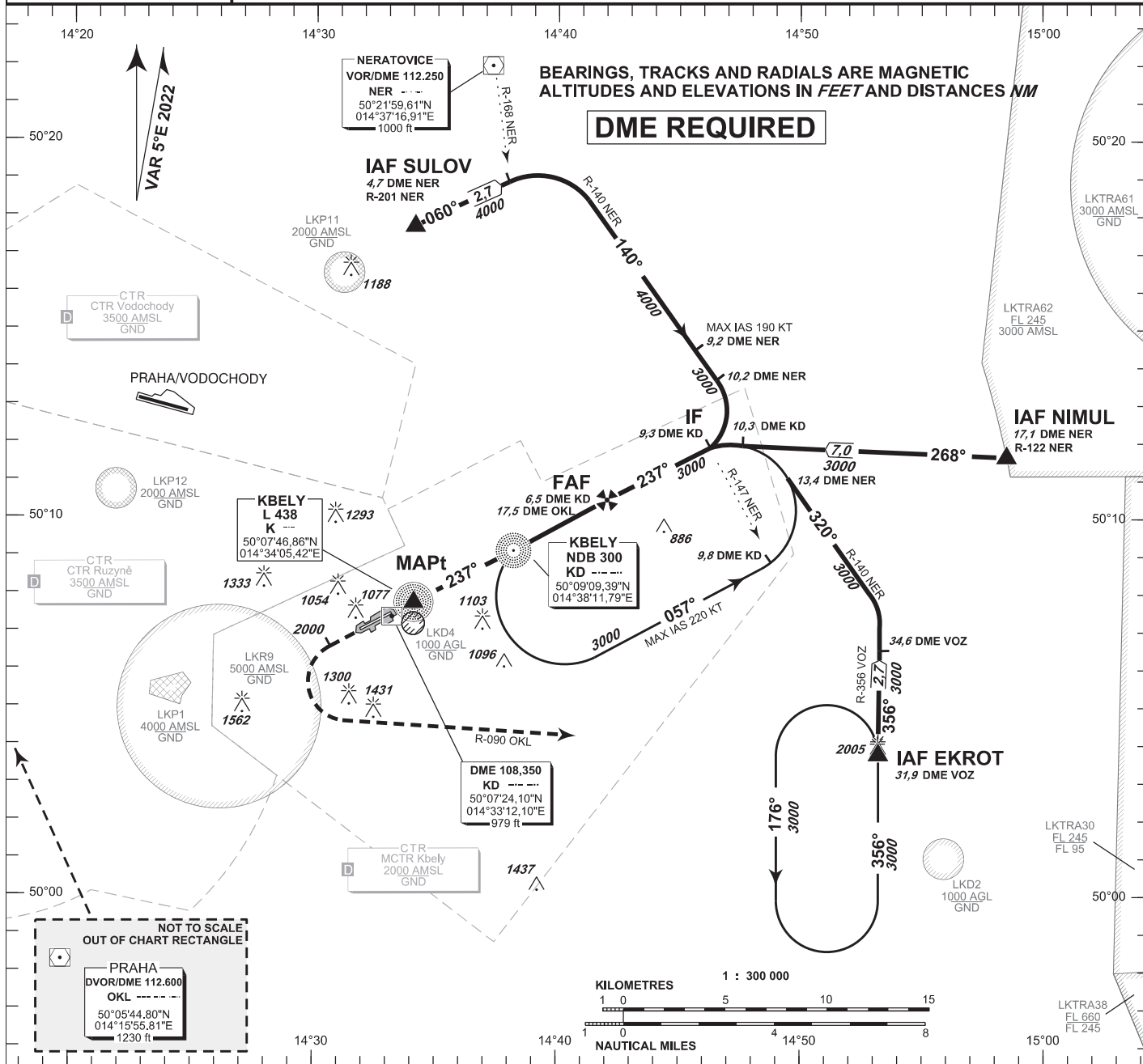
INSTRUMENT APPROACH CHART - ICAO

AERODROME ELEV **939**
 THR RWY 06 ELEV **939**
 THR RWY 24 ELEV **916**
 ARP **919**
 OCH RELATED TO THR RWY 24

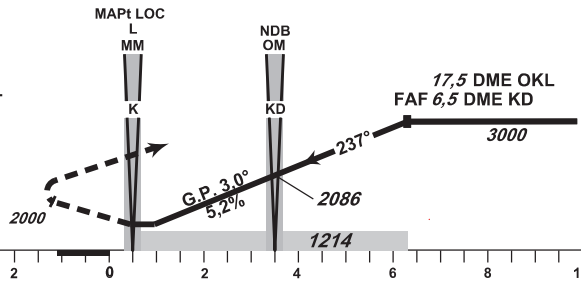
KBELY RADAR 124,680 291,050 reserve
 KBELY PRECISION 126,760 123,300 reserve
 315,000 reserve
 KBELY TOWER 120,880 134,730 reserve



KBELY NDB
RWY 24



MISSED APPROACH:
 Climb to **2000ft** MAX 2,7NM
 KD DME/MNM 8,7NM OKL DME,
 turn left intercept radial R 090 OKL
 then climb to **3000ft** continue to EKROT



TRANSITION ALTITUDE **5000ft**

MISSED APPROACH:
 to IAS ≤ 185 kt min. bank angle 15°
 to IAS ≤ 230 kt min. bank angle 20°
 IAS MAX = 230 KT

THR 500731.93N, 0143321.70E
 ELEV 916

OCA/OCH		A	B	C	D
Straight - in Approach	NDB	ft	1214 / 296		1312 / 394
	PAR	ft	1155 / 239		
Circling (South only)		ft	1345	1656	1971

DME KD	NM	6,5	5,0	4,0	3,0	2,0	1,0	0,5
ALTITUDES	ft	3000	2500	2241	1912	1607	1286	1115
	kt	60	90	120	150	180		
FAF - MAPt 5,8 NM	min:sec	5:49	3:53	2:55	2:20	1:57		
Rate of descent	ft / min	315	470	640	790	960		

Timing is not authorized for defining the MAPt

change: horizontal and vertical limits of LKP1