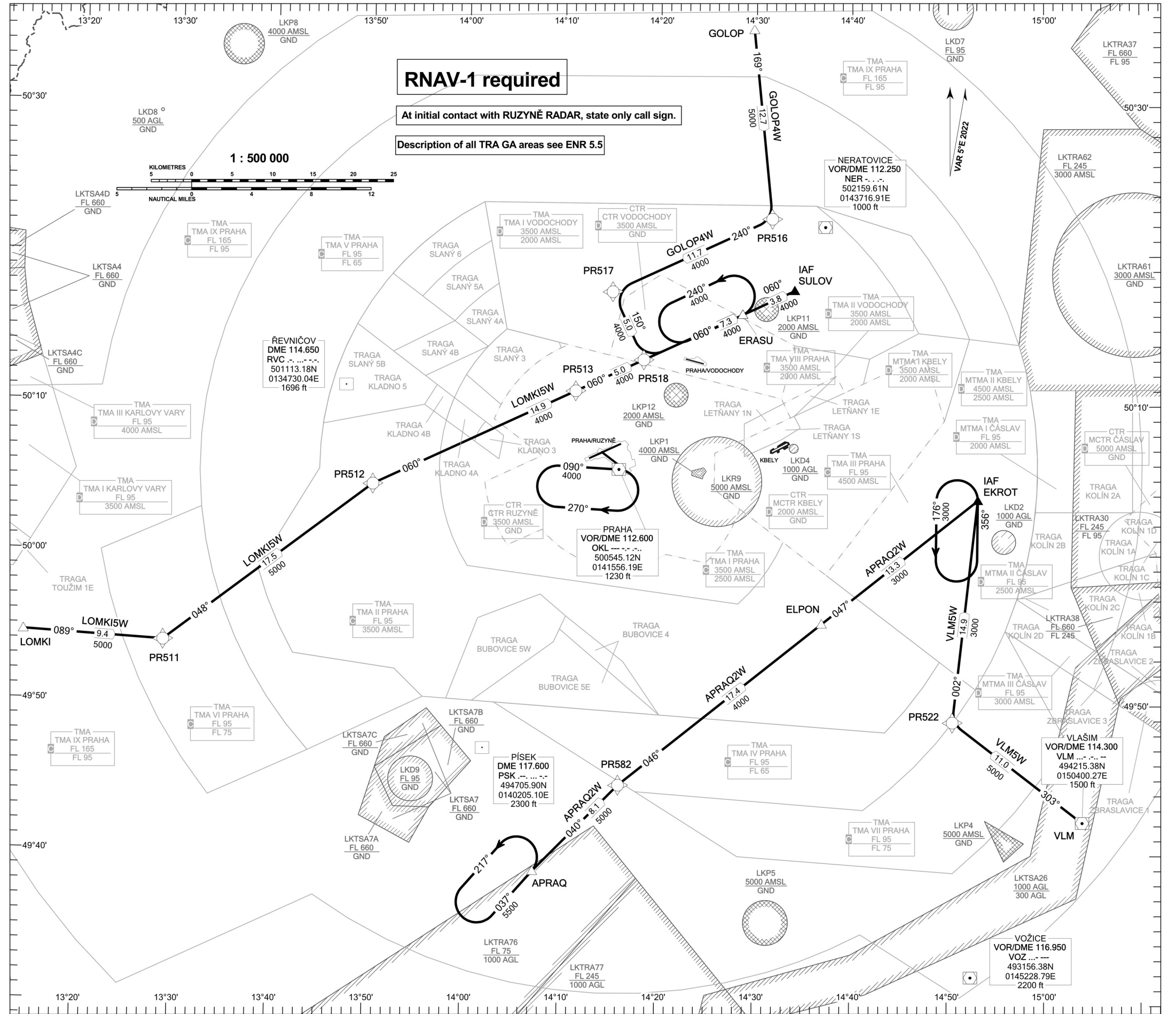


STANDARD ARRIVAL CHART- INSTRUMENT (STAR) - ICAO

KBELY (LKKB) RNAV RWY 24

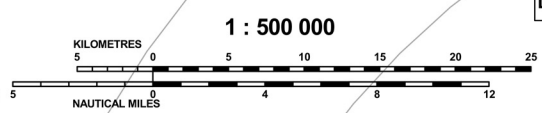
APRAQ2W GOLOP4W LOMKI5W VLM5W



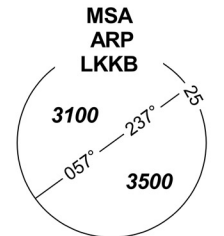
RNAV-1 required

At initial contact with RUZYNE RADAR, state only call sign.

Description of all TRA GA areas see ENR 5.5



KBELY RADAR	124.680
KBELY TOWER	291.050 (reserve) 120.880
KBELY PRECISION	134.730 (reserve) 126.760 123.300 (reserve) 315.000 (reserve)



BEARINGS, TRACKS AND RADIALS ARE MAGNETIC
ALTITUDES AND ELEVATIONS ARE IN FEET
DISTANCES ARE IN NM

TRANSITION ALTITUDE
5000

change: horizontal and vertical limits of LKP1