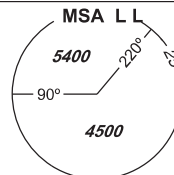


# INSTRUMENT APPROACH CHART - ICAO

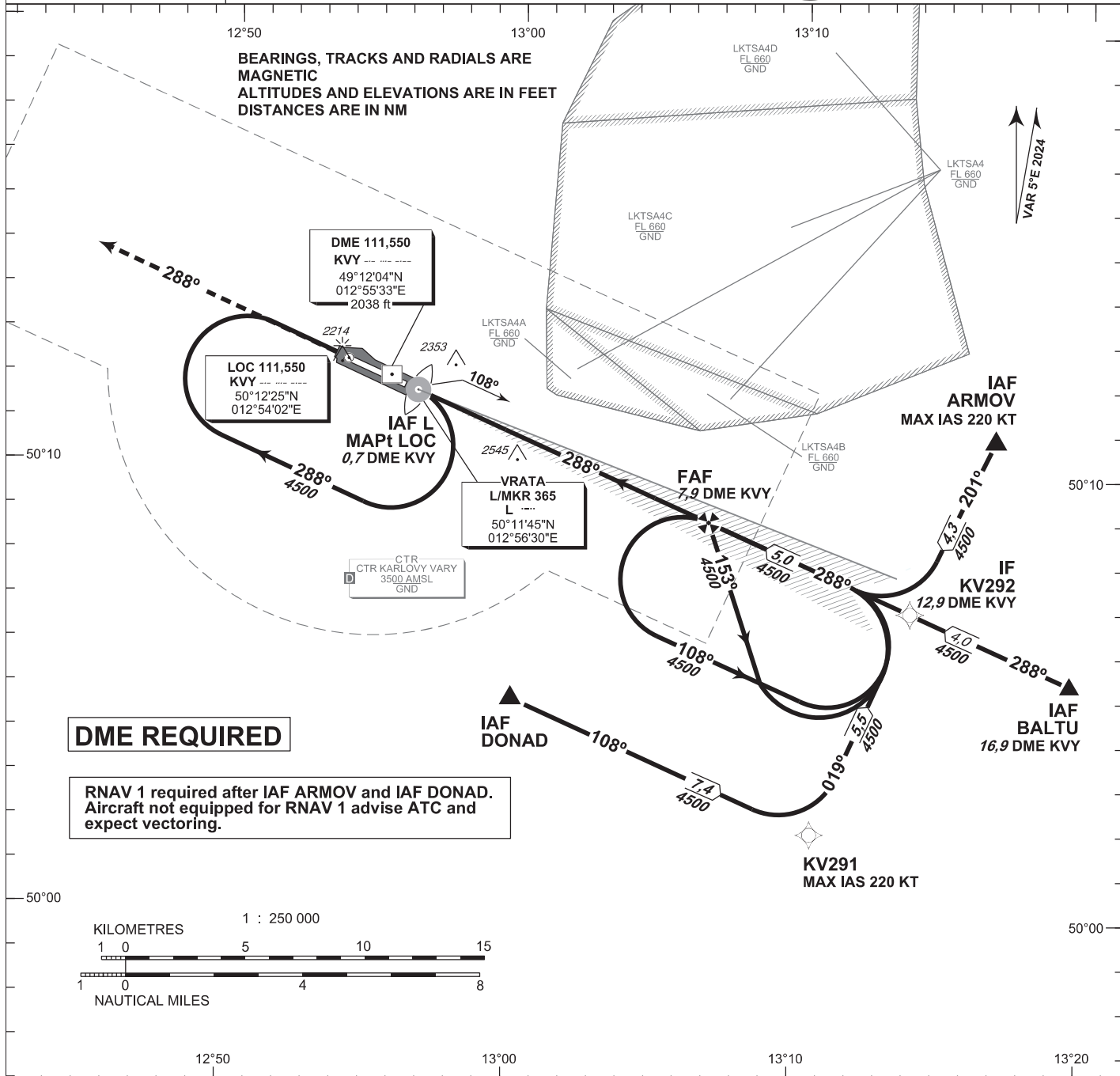
AERODROME ELEV **1989**  
THR RWY 29 ELEV **1985**

PRAHA RADAR 118,650  
VARY TOWER 121,230  
121,500



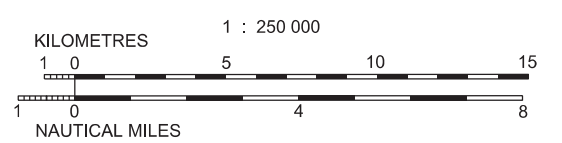
# KARLOVY VARY ILS RWY 29

BEARINGS, TRACKS AND RADIALS ARE MAGNETIC  
ALTITUDES AND ELEVATIONS ARE IN FEET  
DISTANCES ARE IN NM



### DME REQUIRED

RNAV 1 required after IAF ARMV and IAF DONAD. Aircraft not equipped for RNAV 1 advise ATC and expect vectoring.

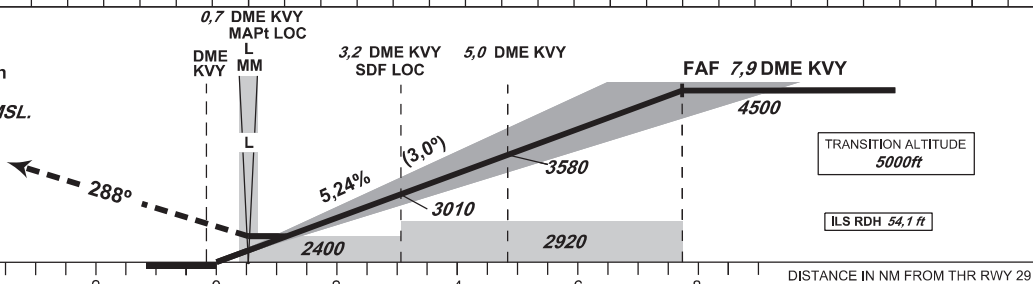


### MISSED APPROACH:

Climb on track 288° to 5000 ft AMSL, expect vectoring. In case of RCF climb on track 288° to 8,0 NM DME KVV and turn right to L L in climbing to 5000 ft AMSL.

THR 501157.33N, 0125544.30E  
ELEV 1985

NM FROM THR 29



OCA/OCH		A	B	C	D
Cat I	ft	2194/210	2206/221	2214/229	2225/240
LOC	ft	2400/410			
Circling (south of AD only)	ft	2520/530	2520/530	2970/980	3160/1170

DME KVV (NM)		7	6	5	4	3	2	1
DIST THR (NM)		6,85	5,85	4,85	3,85	2,85	1,85	0,85
ALTITUDES (ft)		4220	3900	3580	3260	2940	2620	2310
LOC	kt	80	100	120	140	160		
FAF - MAPt 7,2 NM	min:sec	5:24	4:20	3:36	3:05	2:42		
Rate of descent (5,24%)	ft/min	420	530	640	740	850		

change: correction of OCA (2400) in profile;  
previous change: removal of LKD14

Timing is not authorized for defining the MAPt.

Recommended coding:

Path Terminator	Waypoint				Cours / Track MAG° (True°)	DIST NM	Turn Direction	Constraints		Nav Spec.	Remarks
	ID	Type	Flyover	Coordinates				Level	Speed		
via <b>ARMOV</b>											
IF	ARMOV	IAF	NO	501050.76N 0131650.52E	---	---	---	A4500+	K220-	RNAV 1	---
TF	KV292	IF	NO	500656.23N 0131356.91E	201 (205.46)	4.3	---	---	---	RNAV 1	---
via <b>DONAD</b>											
IF	DONAD	IAF	NO	500450.93N 0130000.00E	---	---	---	A4500+	---	RNAV 1	---
TF	KV291	---	NO	500155.29N 0131035.25E	108 (113.17)	7.4	---	---	K220-	RNAV 1	---
TF	KV292	IF	NO	500656.23N 0131356.91E	019 (023.31)	5.5	LEFT	---	---	RNAV 1	---

## ILS CAT I or LOC APPROACH RWY 29

Descent angle (°)	3.00			
Type	IF	FAF/FAP	SDF LOC	MAPt LOC
Fix	KV292 (12.9 DME KVY)	(7.9 DME KVY)	(3.2 DME KVY)	(0.7 DME KVY)
Fix coordinates	500656.23N 0131356.91E	500854.77N 0130648.58E	501045.62N 0130005.83E	501144.84N 0125630.07E
Fix formation bearing (True°)	113.11 LOC KVY	113.11 LOC KVY	113.12 LOC KVY	---
Fix formation distances (NM)	12.89 DME KVY	7.89 DME KVY	3.20 DME KVY	0.68 DME KVY

