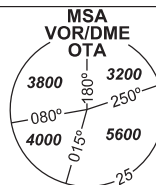


INSTRUMENT APPROACH CHART - ICAO

AERODROME ELEV 842
THR RWY 22 ELEV 808

PRAHA RADAR 119,375
121,500
MOŠNOV TOWER 120,805
121,500



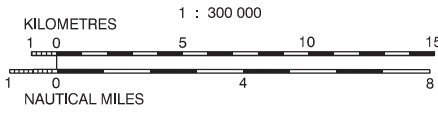
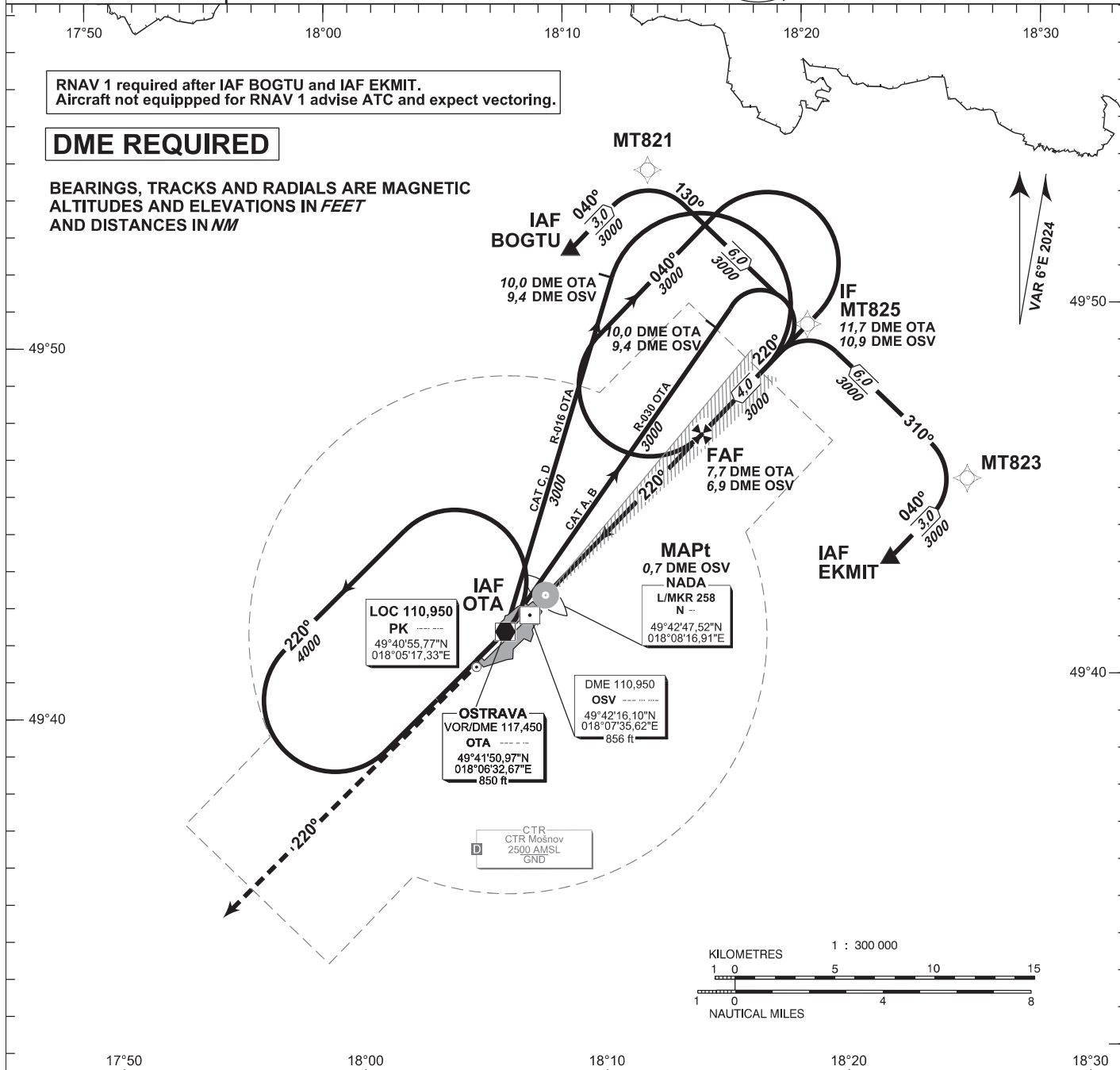
OSTRAVA/Mošnov ILS

RWY 22

RNAV 1 required after IAF BOGTU and IAF EKMIT.
Aircraft not equipped for RNAV 1 advise ATC and expect vectoring.

DME REQUIRED

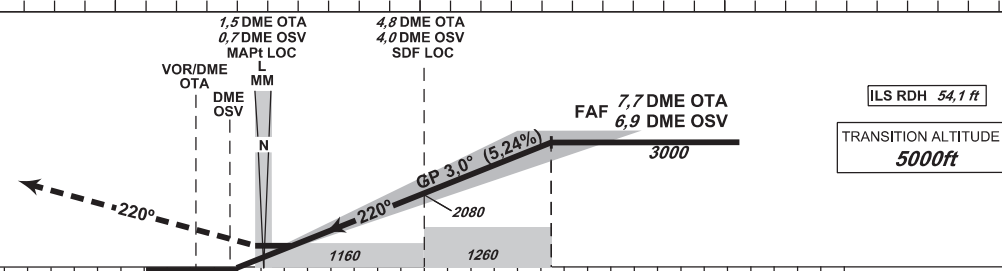
BEARINGS, TRACKS AND RADIALS ARE MAGNETIC
ALTITUDES AND ELEVATIONS IN FEET
AND DISTANCES IN NM



MISSED APPROACH:

Climb on track 220° to 4000 ft AMSL
expect vectoring
In case of RFC climb on track 220°
to 8,0 NM DME OTA and
turn right to VOR/DME OTA
in climbing to 4000 ft AMSL

THR 494225.64N, 0180742.39E
ELEV 808



ILS RDH 54,1 ft
TRANSITION ALTITUDE 5000ft

6 4 2 0 2 4 6 8 10 12 NM FM THR22

OCA/OCH		A	B	C	D
CAT I	ft	963 / 155	975 / 167	983 / 175	993 / 185
CAT II	ft	857 / 49	868 / 60	880 / 72	893 / 85
LOC	ft	1160 / 350			
Circling	ft	1400 / 560	1440 / 600	1630 / 850	2100 / 1260

DME OSV NM	6	5	4	3	2	1
DME OTA NM	6,8	5,8	4,8	3,8	2,8	1,8
DIST THR NM	5,8	4,8	3,8	2,8	1,8	0,8
ALTITUDES ft	2720	2400	2080	1760	1440	1120

FAF - MAPt 6,2 NM	ft	80	100	120	140	160	180
min:sec		4:39	3:43	3:06	2:39	2:19	2:04
Rate of descent (5,24%)	ft/min	420	330	640	740	850	960

Timing is not authorized for defining the MAPt.

INITIAL APPROACH ILS RWY 22

Recommended coding:

Path Terminator	Waypoint				Cours / Track MAG° (True°)	DIST NM	Turn Direction	Constraints		Nav Spec.	Remarks
	ID	Type	Flyover	Coordinates				Level	Speed		
via BOGTU											
IF	BOGTU	IAF	NO	495204.59N 0180955.48E	---	---	---	A3000+	---	RNAV 1	---
TF	MT821	---	NO	495408.55N 0181316.88E	040 (046.37)	3.0	---	---	---	RNAV 1	---
TF	MT825	IF	NO	494948.05N 0181939.97E	130 (136.41)	6.0	RIGHT	---	---	RNAV 1	---
via EKMIT											
IF	EKMIT	IAF	NO	494323.64N 0182240.63E	---	---	---	A3000+	---	RNAV 1	---
TF	MT823	---	NO	494527.22N 0182601.91E	040 (046.53)	3.0	---	---	---	RNAV 1	---
TF	MT825	IF	NO	494948.05N 0181939.97E	310 (316.57)	6.0	LEFT	---	---	RNAV 1	---

ILS or LOC APPROACH RWY 22

Descent angle (°)	3.00			
Type	IF	FAF/FAP	SDF LOC	MAPt LOC
Fix	MT825 (11.7 DME OTA) (10.9 DME OSV)	(7.7 DME OTA) (6.9 DME OSV)	(4.8 DME OTA) (4.0 DME OSV)	L (NADA) (1.5 DME OTA) (0.7 DME OSV)
Fix coordinates	494948.05N 0181939.97E	494703.29N 0181511.99E	494504.37N 0181159.16E	494247.25N 0180817.30E
Fix formation bearing (True°)	046.83 OTA 046.30 OSV	047.08 OTA 046.30 OSV	047.55 OTA 046.30 OSV	050.31 OTA 046.30 OSV
Fix formation distances (NM)	11.65 DME OTA 10.87 DME OSV	7.66 DME OTA 6.88 DME OSV	4.78 DME OTA 4.00 DME OSV	1.47 DME OTA 0.69 DME OSV

