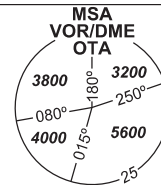


# INSTRUMENT APPROACH CHART - ICAO

AERODROME ELEV 842  
THR RWY 04 ELEV 842

PRAHA RADAR 119,375  
121,500  
MOŠNOV TOWER 120,805  
121,500



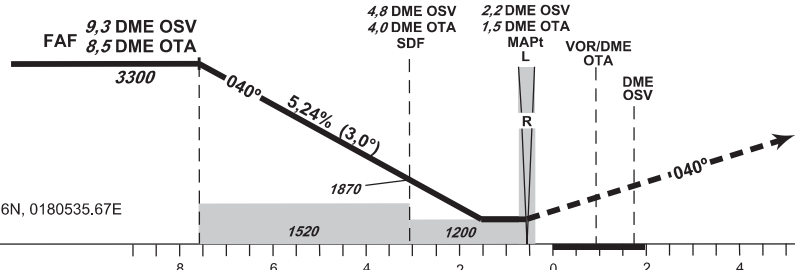
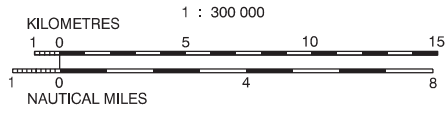
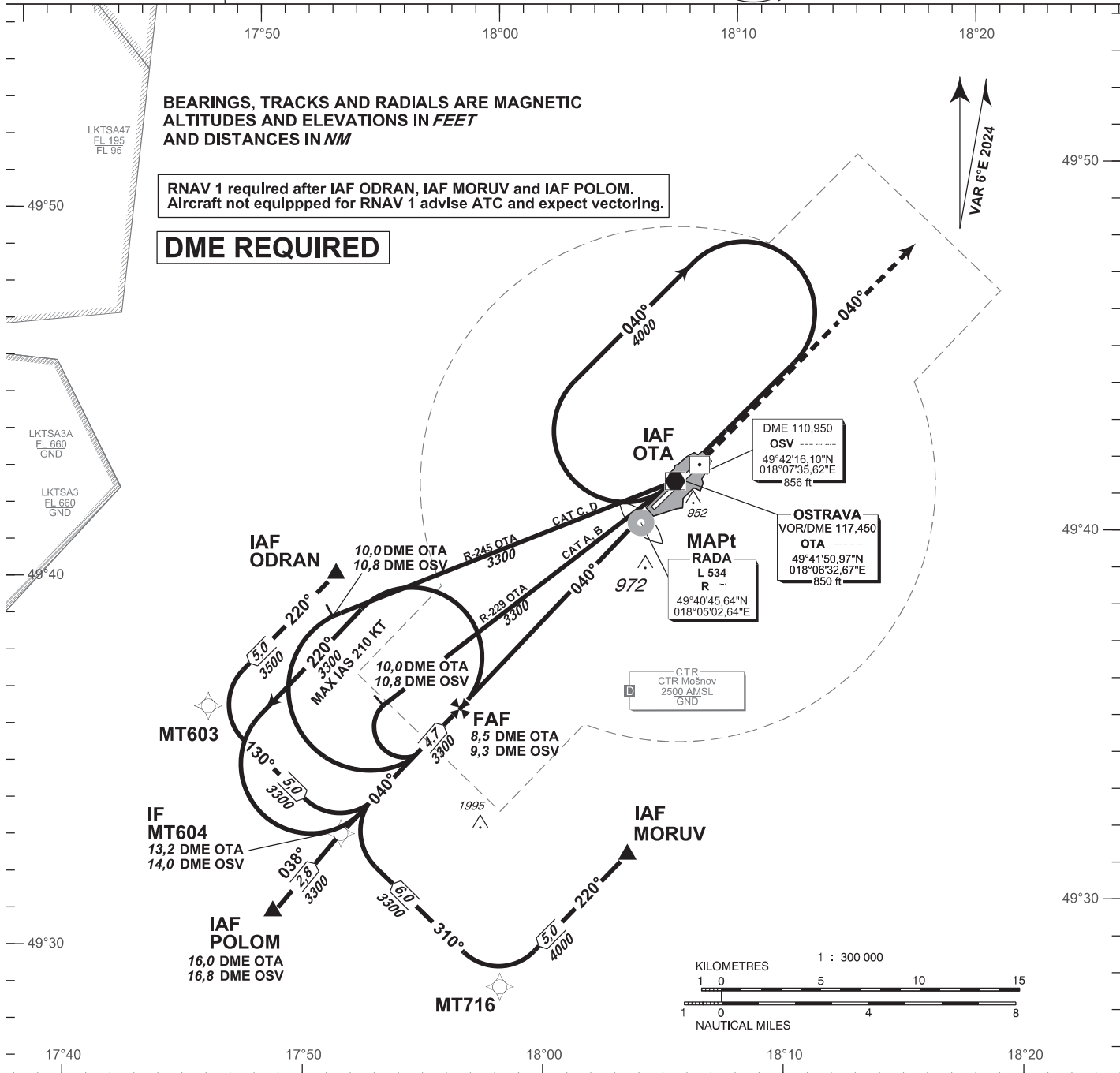
**OSTRAVA/Mošnov NDB**

**RWY 04**

BEARINGS, TRACKS AND RADIALS ARE MAGNETIC  
ALTITUDES AND ELEVATIONS IN FEET  
AND DISTANCES IN NM

RNAV 1 required after IAF ODRAN, IAF MORUV and IAF POLOM.  
Aircraft not equipped for RNAV 1 advise ATC and expect vectoring.

**DME REQUIRED**



**MISSED APPROACH:**  
Climb on track 040° to 4000 ft AMSL  
expect vectoring  
In case of RFC climb on track 040°  
to 8,0 NM DME OTA and  
turn right to VOR/DME OTA  
in climbing to 4000 ft AMSL

TRANSITION ALTITUDE  
**5000ft**

THR 494107.16N, 0180535.67E  
ELEV 842

OCA/OCH	A	B	C	D
Straight-in Approach	1200/360			
Circling	1400/560	1440/600	1690/850	2100/1260

DME OSV NM	9	8	7	6	5	4	3
DME OTA NM	8,2	7,2	6,2	5,2	4,2	3,2	2,2
DIST THR NM	7,3	6,3	5,3	4,3	3,3	2,3	1,3
ALTITUDES ft	3200	2890	2570	2250	1930	1610	1290

FAF - MAPt 7,0 NM	ft	80	100	120	140	160	180
Rate of descent (5,24%)	ft/min	420	330	640	740	850	960

change: removal of LKD13

Timing is not authorized for defining the MAPt.

## INITIAL APPROACH NDB RWY 04

Recommended coding:

Path Terminator	Waypoint				Cours / Track MAG° (True°)	DIST NM	Turn Direction	Constraints		Nav Spec.	Remarks
	ID	Type	Flyover	Coordinates				Level	Speed		
via <b>MORUV</b>											
IF	MORUV	IAF	NO	493147.08N 0180354.51E	---	---	---	A4000+	---	RNAV 1	---
TF	MT716	---	NO	492819.92N 0175822.29E	220 (226.28)	5.0	---	---	---	RNAV 1	---
TF	MT604	IF	NO	493239.25N 0175200.00E	310 (316.21)	6.0	RIGHT	---	---	RNAV 1	---
via <b>ODRAN</b>											
IF	ODRAN	IAF	NO	493942.82N 0175212.89E	---	---	---	A3500+	---	RNAV 1	---
TF	MT603	---	NO	493615.10N 0174640.55E	220 (226.14)	5.0	---	---	---	RNAV 1	---
TF	MT604	IF	NO	493239.25N 0175200.00E	130 (136.06)	5.0	LEFT	---	---	RNAV 1	---
via <b>POLOM</b>											
IF	POLOM	IAF	NO	493037.51N 0174902.68E	---	---	---	A3300+	---	RNAV 1	---
TF	MT604	IF	NO	493239.25N 0175200.00E	038 (043.46)	2.8	---	---	---	RNAV 1	---

## APPROACH NDB RWY 04

Descent angle (°)	3.00			
Type	IF	FAF	SDF	MAPt
Fix	MT604 (13.2 DME OTA) (14.0 DME OSV)	(8.5 DME OTA) (9.3 DME OSV)	(4.0 DME OTA) (4.8 DME OSV)	NDB R (1.5 DME OTA) (2.2 DME OSV)
Fix coordinates	493239.25N 0175200.00E	493553.68N 0175711.34E	493900.56N 0180212.74E	494045.64N 0180502.64E
Fix formation bearing (True°)	226.36 NDB R	226.40 NDB R	226.40 NDB R	---
Fix formation distances (NM)	13.19 DME OTA 13.98 DME OSV	8.51 DME OTA 9.29 DME OSV	4.00 DME OTA 4.78 DME OSV	1.46 DME OTA 2.24 DME OSV

