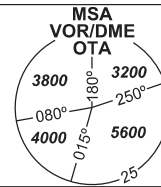


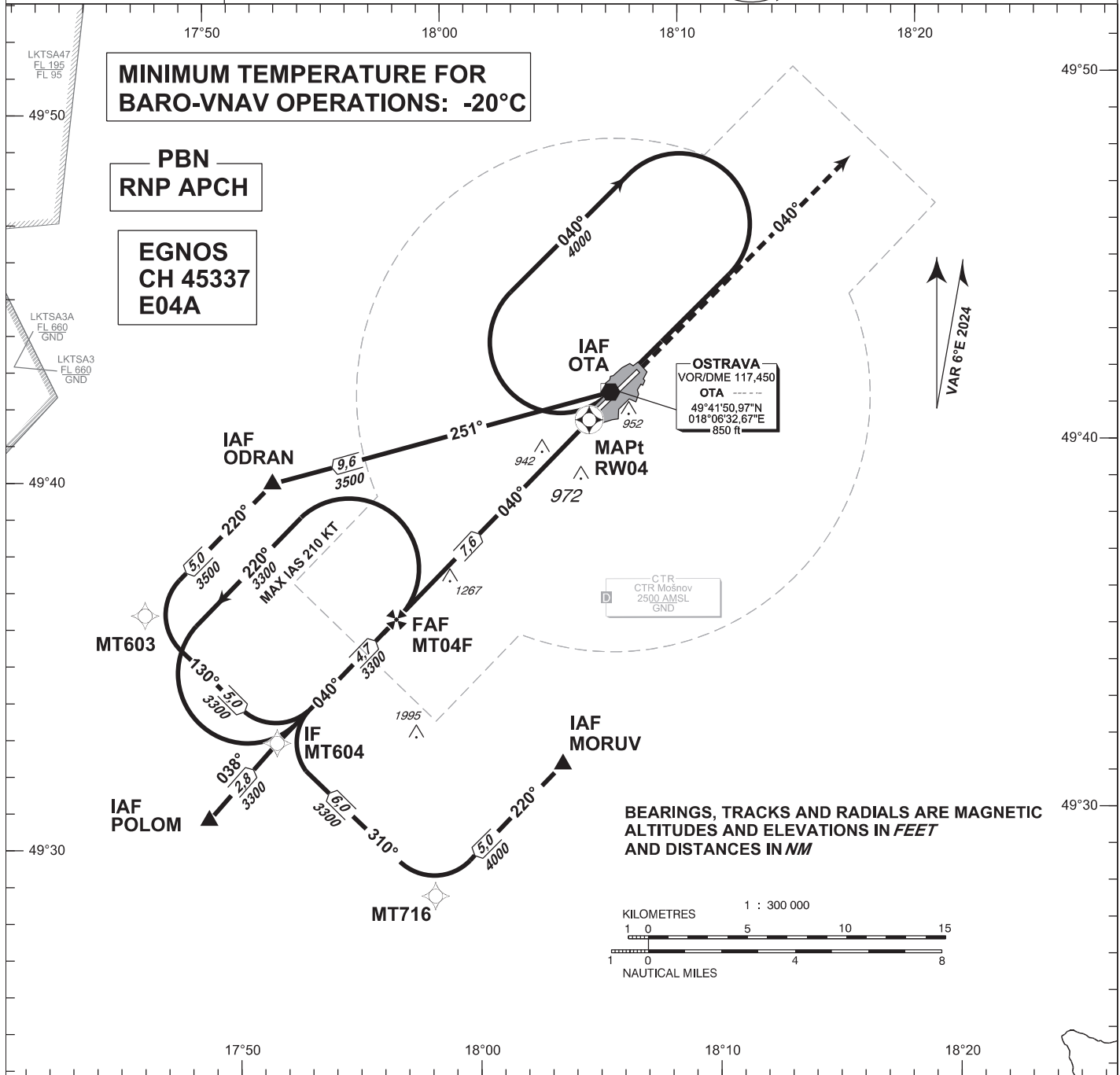
INSTRUMENT APPROACH CHART - ICAO

AERODROME ELEV 842
THR RWY 04 ELEV 842

PRAHA RADAR 119,375
121,500
MOŠNOV TOWER 120,805
121,500



OSTRAVA/Mošnov
RNP
RWY 04



MINIMUM TEMPERATURE FOR BARO-VNAV OPERATIONS: -20°C

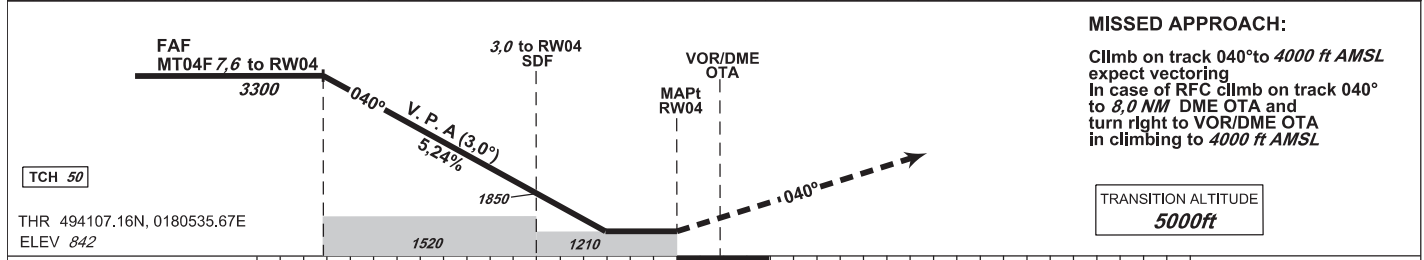
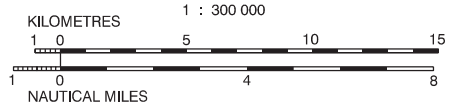
PBN RNP APCH

EGNOS CH 45337 E04A

OSTRAVA
VOR/DME 117,450
OTA
49°41'50,97"N
018°06'32,67"E
850 ft

CTR
CTR Mošnov
2500 AMSL
GND

BEARINGS, TRACKS AND RADIALS ARE MAGNETIC
ALTITUDES AND ELEVATIONS IN FEET
AND DISTANCES IN NM



MISSED APPROACH:
Climb on track 040° to 4000 ft AMSL expect vectoring
In case of RFC climb on track 040° to 8,0 NM DME OTA and turn right to VOR/DME OTA in climbing to 4000 ft AMSL

TRANSITION ALTITUDE
5000ft

OCA/OCH	A	B	C	D	
LNAV	ft	1210/370			
LNAV/VNAV	ft	1106/270			
LPV	ft	1092/250			
Circling	ft	1400/560	1440/600	1690/850	2100/1260

DIST TO THR (RW04) NM	7	6	5	4	3	2	1
ALTITUDES ft	3120	2800	2480	2160	1850	1530	1210

FAF - MAPt (RW04) 7,6 NM	kt	80	100	120	140	160	180
min:sec		5:40	4:30	3:47	3:14	2:50	2:31
Rate of descent	ft/min	420	530	640	740	850	960

change: removal of LKD13

Timing is not authorized for defining the MAPt.

APPROACH RNP RWY 04

Recommended coding:

Path Terminator	Waypoint				Cours / Track MAG° (True°)	DIST NM	Turn Direction	Constraints		Nav Spec.	Remarks
	ID	Type	Flyover	Coordinates				Level	Speed		
via MORUV											
IF	MORUV	IAF	NO	493147.08N 0180354.51E	---	---	---	A4000+	---	RNP APCH	---
TF	MT716	---	NO	492819.92N 0175822.29E	220 (226.28)	5.00	---	---	---	RNP APCH	---
TF	MT604	IF	NO	493239.25N 0175200.00E	310 (316.21)	6.00	RIGHT	---	---	RNP APCH	---
TF	MT04F	FAF	NO	493553.68N 0175711.34E	040 (046.13)	4.7	RIGHT	A3300	---	RNP APCH	---
TF	RW04	MAPT	YES	494107.16N 0180535.67E	040 (046.27)	7.6	---	---	---	RNP APCH	---
VA	---	---	---	---	040 (046.30)	21.5	---	A4000+	---	RNP APCH	---
via ODRAN											
IF	ODRAN	IAF	NO	493942.82N 0175212.89E	---	---	---	A3500+	---	RNP APCH	---
TF	MT603	---	NO	493615.10N 0174640.55E	220 (226.14)	5.0	---	---	---	RNP APCH	---
TF	MT604	IF	NO	493239.25N 0175200.00E	130 (136.06)	5.0	LEFT	---	---	RNP APCH	---
TF	MT04F	FAF	NO	493553.68N 0175711.34E	040 (046.13)	4.7	LEFT	A3300	---	RNP APCH	---
TF	RW04	MAPT	YES	494107.16N 0180535.67E	040 (046.27)	7.6	---	---	---	RNP APCH	---
VA	---	---	---	---	040 (046.30)	21.5	---	A4000+	---	RNP APCH	---
via OTA											
IF	OTA	IAF	NO	494150.97N 0180632.67E	---	---	---	A3500+	---	RNP APCH	---
TF	ODRAN	---	NO	493942.82N 0175212.89E	251 (257.15)	9.6	---	---	---	RNP APCH	---
TF	MT603	---	NO	493615.10N 0174640.55E	220 (226.14)	5.0	LEFT	---	---	RNP APCH	---
TF	MT604	IF	NO	493239.25N 0175200.00E	130 (136.06)	5.0	LEFT	---	---	RNP APCH	---
TF	MT04F	FAF	NO	493553.68N 0175711.34E	040 (046.13)	4.7	LEFT	A3300	---	RNP APCH	---
TF	RW04	MAPT	YES	494107.16N 0180535.67E	040 (046.27)	7.6	---	---	---	RNP APCH	---
VA	---	---	---	---	040 (046.30)	21.5	---	A4000+	---	RNP APCH	---
via POLOM											
IF	POLOM	IAF	NO	493037.51N 0174902.68E	---	---	---	A3300+	---	RNP APCH	---
TF	MT604	IF	NO	493239.25N 0175200.00E	038 (043.46)	2.8	---	---	---	RNP APCH	---
TF	MT04F	FAF	NO	493553.68N 0175711.34E	040 (046.13)	4.7	---	A3300	---	RNP APCH	---
TF	RW04	MAPT	YES	494107.16N 0180535.67E	040 (046.27)	7.6	---	---	---	RNP APCH	---
VA	---	---	---	---	040 (046.30)	21.5	---	A4000+	---	RNP APCH	---

RNAV HOLDING

Holding point	Inbound MAG° (True°)	Outbound MAG° (True°)	Turn Direction	MAX IAS kt	Min. holding altitude FT MSL / FL	Time	Distance NM	Remarks
OTA	220 (226.30)	040 (046.33)	RIGHT	---	A4000	1 MIN	---	---
MT04F	040 (046.30)	220 (226.30)	LEFT	210	A3300	1 MIN	---	---

SBAS FAS Data Block

Input Data

Operation Type	0
SBAS Provider	1 (EGNOS)
Airport Identifier	LKMT
Runway	04
Runway Letter	0 (None)
Approach Performance Designator	0
Route Indicator	
Reference Path Data Selector	0
Reference Path Identifier	E04A
LTP/FTP Latitude	494107.1600N
LTP/FTP Longitude	0180535.6700E
LTP/FTP Ellipsoidal Height (metres)	299.5
FPAP Latitude	494225.6400N
Delta FPAP Latitude (seconds)	78.4800
FPAP Longitude	0180742.3900E
Delta FPAP Longitude (seconds)	126.7200
Threshold Crossing Height	50.0
TCH Units Selector	0 (feet)
Glidepath Angle (degrees)	3.00
Course Width (metres)	105.00
Length Offset (metres)	0
HAL (metres)	40.0
VAL (metres)	50.0

Output Data

Data Block	10 14 0D 0B 0C 04 00 00 01 34 30 05 B0 97 52 15 6C C8 C3 07 B3 1F 20 65 02 00 DE 03 F4 01 2C 01 64 00 C8 FA 1F EE 38 F0
Calculated CRC Value	1FEE38F0

Required Additional Data

ICAO Code	LK
LTP/FTP Orthometric Height (metres)	256.5

