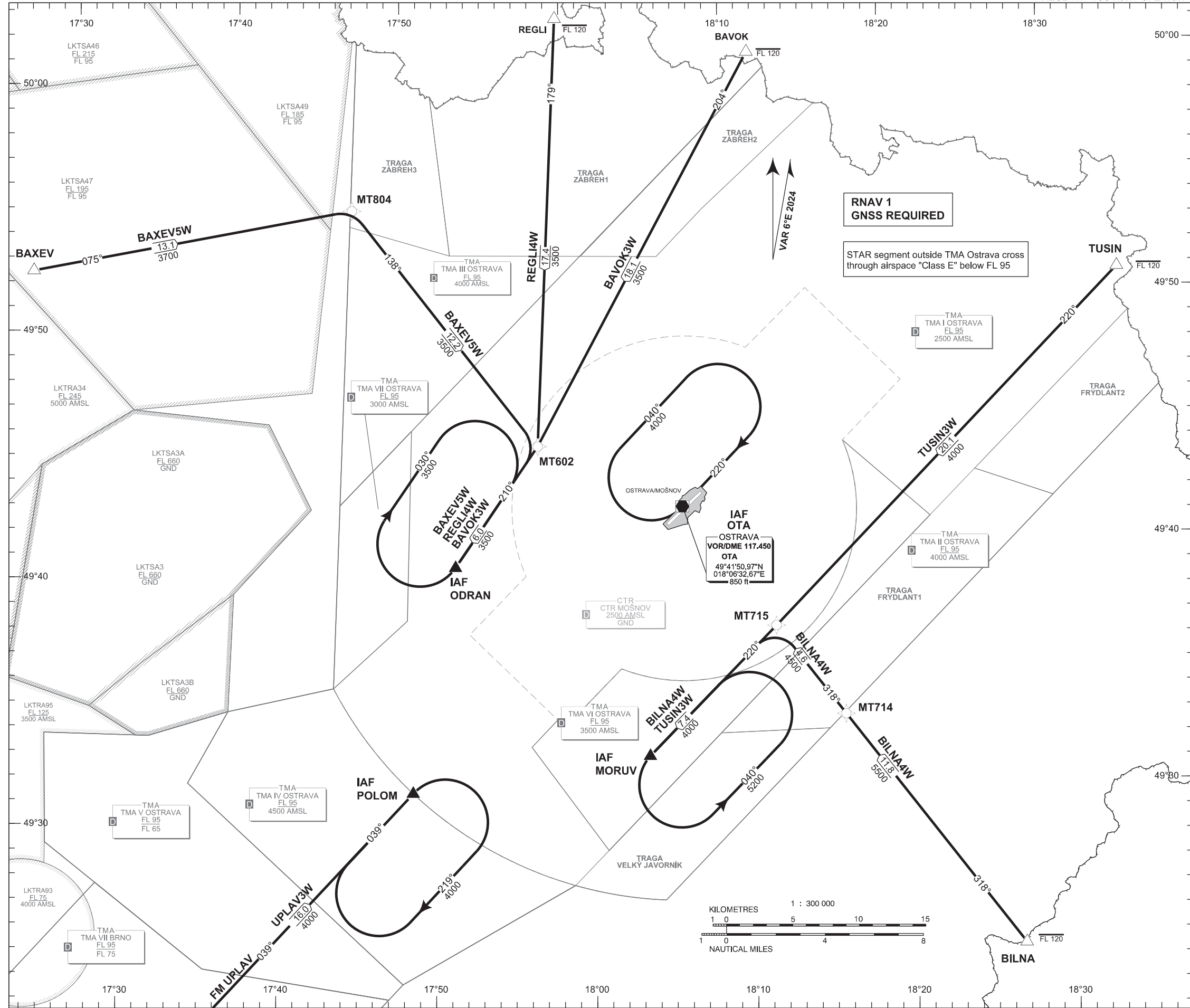


STANDARD ARRIVAL CHART-  
INSTRUMENT (STAR) - ICAO

OSTRAVA/MOŠNOV (LKMT)

RNAV STAR RWY 04

BAVOK3W BAXEV5W BILNA4W  
REGLI4W TUSIN3W UPLAV3W



Recommended coding:

Designator			Route					Remarks		
Path Terminator	Waypoint			Cours / Track MAG° (True°)	DIST NM	Turn Direction	Constraints		Nav Spec.	Remarks
	ID	Flyover	Coordinates				Crossing ALT	Speed		
<b>BAVOK3W</b> (BAVOK THREE WHISKEY ARRIVAL)			BAVOK - MT602 - ODRAN					---		
IF	BAVOK	NO	500010.0000N 0181143.0000E	---	---	---	FL120-	---	RNAV 1	---
TF	MT602	NO	494430.58N 0175738.49E	204 (210.25)	18.1	---	---	---	RNAV 1	---
TF	ODRAN	NO	493942.82N 0175212.89E	210 (216.31)	6.0	---	---	---	RNAV 1	IAF
<b>BAXEV5W</b> (BAXEV FIVE WHISKEY ARRIVAL)			BAXEV - MT804 - MT602 - ODRAN					---		
IF	BAXEV	NO	495223.68N 0172629.37E	---	---	---	---	---	RNAV 1	---
TF	MT804	NO	495419.91N 0174633.70E	075 (081.38)	13.1	---	---	---	RNAV 1	---
TF	MT602	NO	494430.58N 0175738.49E	138 (143.81)	12.2	RIGHT	---	---	RNAV 1	---
TF	ODRAN	NO	493942.82N 0175212.89E	210 (216.31)	6.0	RIGHT	---	---	RNAV 1	IAF
<b>BILNA4W</b> (BILNA FOUR WHISKEY ARRIVAL)			BILNA - MT714 - MT715 - MORUV					---		
IF	BILNA	NO	492336.79N 0182650.28E	---	---	---	FL120-	---	RNAV 1	---
TF	MT714	NO	493311.02N 0181613.60E	318 (324.22)	11.8	---	---	---	RNAV 1	---
TF	MT715	NO	493652.54N 0181206.62E	318 (324.09)	4.6	---	---	---	RNAV 1	---
TF	MORUV	NO	493147.08N 0180354.51E	220 (226.39)	7.4	LEFT	---	---	RNAV 1	IAF
<b>REGLI4W</b> (REGLI FOUR WHISKEY ARRIVAL)			REGLI - MT602 - ODRAN					---		
IF	REGLI	NO	500149.0000N 0175944.0000E	---	---	---	FL120-	---	RNAV 1	---
TF	MT602	NO	494430.58N 0175738.49E	179 (184.48)	17.4	---	---	---	RNAV 1	---
TF	ODRAN	NO	493942.82N 0175212.89E	210 (216.31)	6.0	RIGHT	---	---	RNAV 1	IAF
<b>TUSIN3W</b> (TUSIN THREE WHISKEY ARRIVAL)			TUSIN - MT715 - MORUV					---		
IF	TUSIN	NO	495050.98N 0183422.21E	---	---	---	FL120-	---	RNAV 1	---
TF	MT715	NO	493652.54N 0181206.62E	220 (226.06)	20.1	---	---	---	RNAV 1	---
TF	MORUV	NO	493147.08N 0180354.51E	220 (226.39)	7.4	---	---	---	RNAV 1	IAF
<b>UPLAV3W</b> (UPLAV THREE WHISKEY ARRIVAL)			UPLAV - POLOM					---		
IF	UPLAV	NO	491922.27N 0173142.23E	---	---	---	---	---	RNAV 1	---
TF	POLOM	NO	493037.51N 0174902.68E	039 (045.04)	16.0	---	---	---	RNAV 1	IAF

## RNAV HOLDING

Holding point	Inbound MAG° (True°)	Outbound MAG° (True°)	Turn Direction	MAX IAS kt	Min.holding altitude FT MSL / FL	Time	Distance NM	Remarks
ODRAN	210 (216.31)	030 (036.31)	RIGHT	---	A3500	1 MIN	---	---
MORUV	220 (226.39)	040 (046.39)	LEFT	---	A5200	1 MIN	---	---
POLOM	039 (045.04)	219 (225.04)	RIGHT	---	A4000	1 MIN	---	---
OTA	220 (226.33)	040 (046.33)	RIGHT	---	A4000	1 MIN	---	---