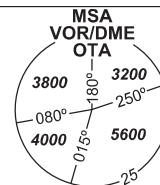


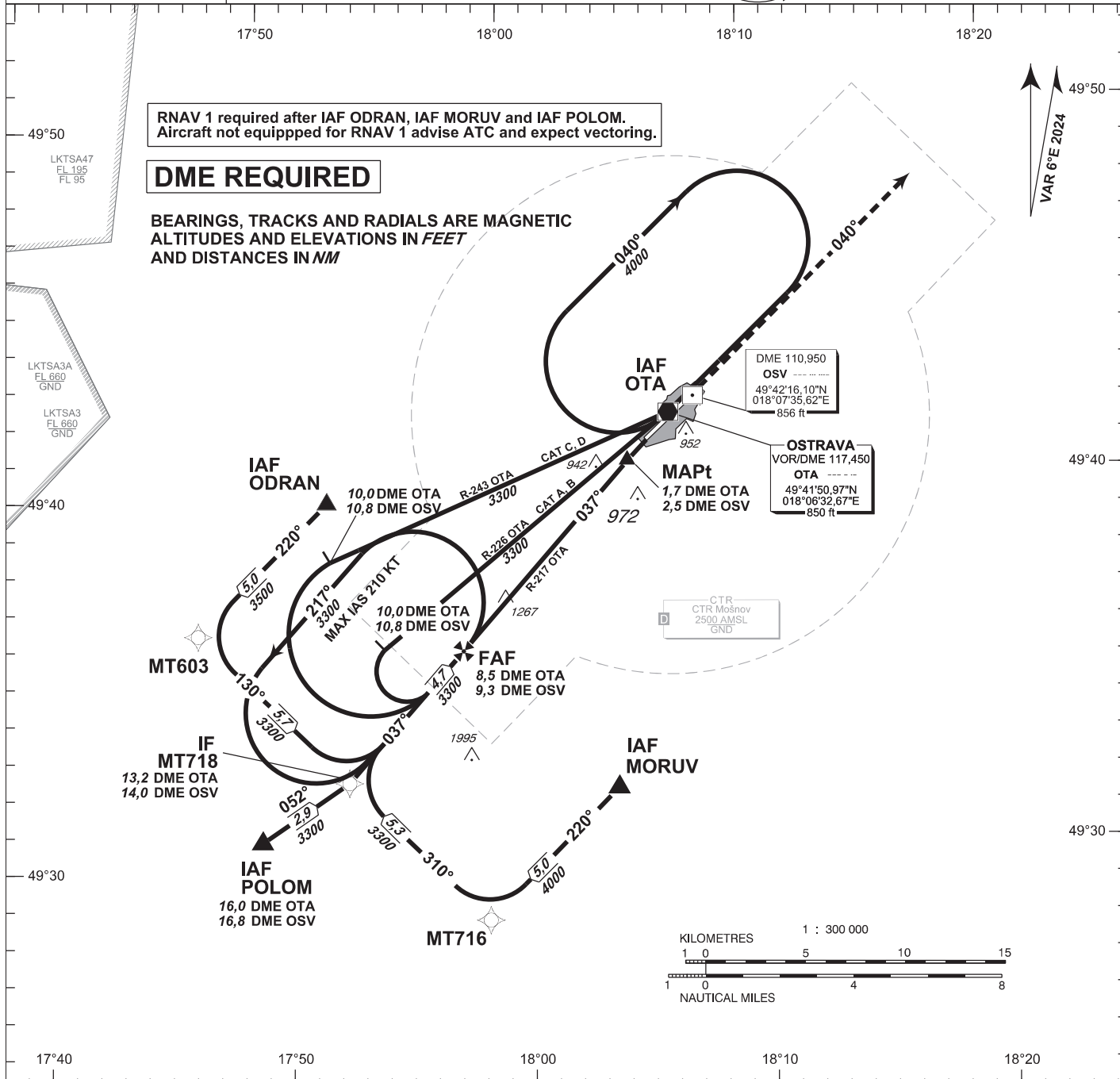
# INSTRUMENT APPROACH CHART - ICAO

AERODROME ELEV 842  
THR RWY 04 ELEV 842

PRAHA RADAR	119,375 121,500
MOŠNOV TOWER	120,805 121,500



**OSTRAVA/Mošnov VOR RWY 04**

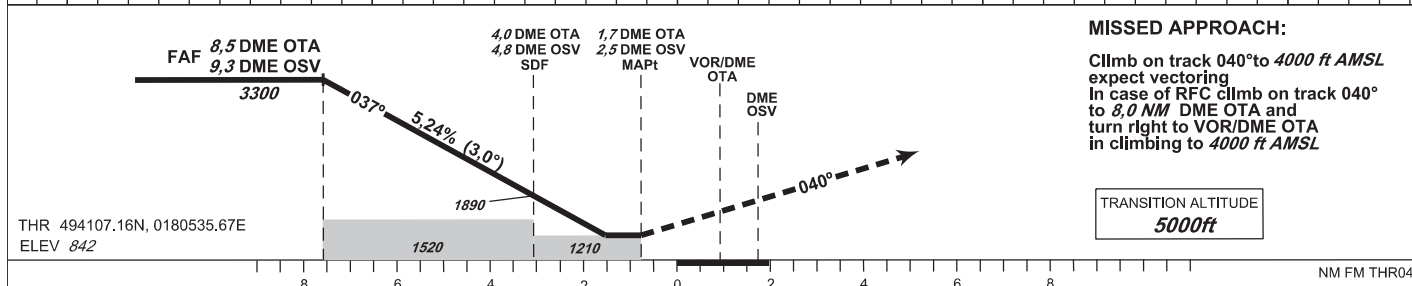
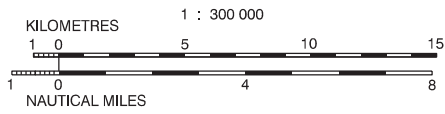


RNAV 1 required after IAF ODRAN, IAF MORUV and IAF POLOM. Aircraft not equipped for RNAV 1 advise ATC and expect vectoring.

**DME REQUIRED**

BEARINGS, TRACKS AND RADIALS ARE MAGNETIC  
ALTITUDES AND ELEVATIONS IN FEET  
AND DISTANCES IN NM

CTR Mošnov  
2500 AMSL  
GND



**MISSED APPROACH:**  
Climb on track 040° to 4000 ft AMSL expect vectoring  
In case of RFC climb on track 040° to 8,0 NM DME OTA and turn right to VOR/DME OTA in climbing to 4000 ft AMSL

TRANSITION ALTITUDE  
**5000ft**

OCA/OCH		A	B	C	D
Straight-in Approach	ft	1210 / 370			
Circling	ft	1400 / 560	1440 / 600	1690 / 850	2100 / 1260

DME OTA NM	8	7	6	5	4	3	2
DME OSV NM	8,8	7,8	6,8	5,8	4,8	3,8	2,8
DIST THR NM	7,0	6,0	5,0	4,0	3,0	2,0	1,0
ALTITUDES ft	3130	2820	2500	2180	1860	1540	1220

FAF - MAPt 6,8 NM	ft	80	100	120	140	160	180
min:sec		5:06	4:05	3:24	2:55	2:33	2:16
Rate of descent (5,24%)	ft/min	420	530	640	740	850	960

change: removal of LKD13

Timing is not authorized for defining the MAPt.

## INITIAL APPROACH VOR RWY 04

Recommended coding:

Path Terminator	Waypoint				Cours / Track MAG° (True°)	DIST NM	Turn Direction	Constraints		Nav Spec.	Remarks
	ID	Type	Flyover	Coordinates				Level	Speed		
via <b>MORUV</b>											
IF	MORUV	IAF	NO	493147.08N 0180354.51E	---	---	---	A4000+	---	RNAV 1	---
TF	MT716	---	NO	492819.92N 0175822.29E	220 (226.28)	5.00	---	---	---	RNAV 1	---
TF	MT718	IF	NO	493209.39N 0175244.09E	310 (316.21)	5.3	RIGHT	---	---	RNAV 1	---
via <b>ODRAN</b>											
IF	ODRAN	IAF	NO	493942.82N 0175212.89E	---	---	---	A3500+	---	RNAV 1	---
TF	MT603	---	NO	493615.10N 0174640.55E	220 (226.14)	5.0	---	---	---	RNAV 1	---
TF	MT718	IF	NO	493209.39N 0175244.09E	130 (136.06)	5.7	LEFT	---	---	RNAV 1	---
via <b>POLOM</b>											
IF	POLOM	IAF	NO	493037.51N 0174902.68E	---	---	---	A3300+	---	RNAV 1	---
TF	MT718	IF	NO	493209.39N 0175244.09E	052 (057.46)	2.9	---	---	---	RNAV 1	---

## APPROACH VOR RWY 04

Descent angle (°)	3.00			
Type	IF	FAF	SDF	MAPt
Fix	MT718 (13.2 DME OTA) (14.0 DME OSV)	(8.5 DME OTA) (9.3 DME OSV)	(4.0 DME OTA) (4.8 DME OSV)	(1.7 DME OTA) (2.5 DME OSV)
Fix coordinates	493209.39N 0175244.09E	493536.44N 0175738.05E	493851.97N 0180216.71E	494035.86N 0180445.17E
Fix formation bearing (True°)	222.88 OTA	222.88 OTA	222.88 OTA	222.88 OTA
Fix formation distances (NM)	13.22 DME OTA 13.99 DME OSV	8.52 DME OTA 9.29 DME OSV	4.07 DME OTA 4.84 DME OSV	1.71 DME OTA 2.49 DME OSV

