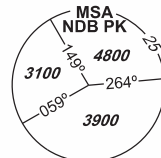


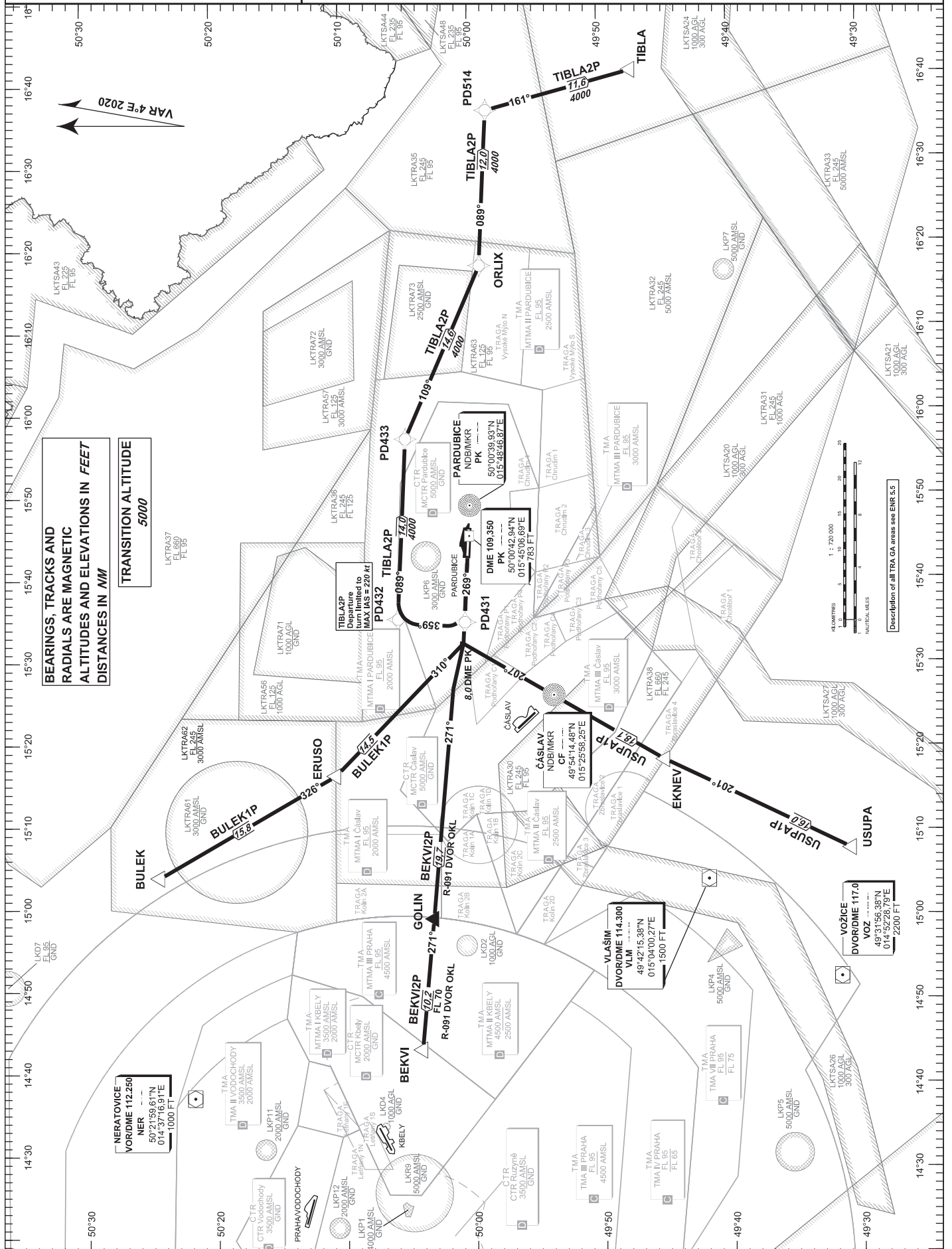
# STANDARD DEPARTURE CHART-INSTRUMENT (SID) - ICAO

PARDUBICE		
RADAR	128,365	267,300 O/R
PRECISION	296,825 O/R	123,300 reserve
TOWER	120,155	120,205 reserve



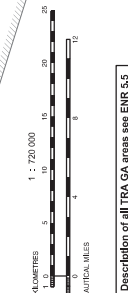
## PARDUBICE (LKPD) RNAV RWY 27

BULEK1P BEKVI2P  
USUPA1P TIBLA2P



**BEARINGS, TRACKS AND RADIALS ARE MAGNETIC ALTITUDES AND ELEVATIONS IN FEET DISTANCES IN NM**

**TRANSITION ALTITUDE 5000**



**NERATOVICE**  
VOR/DME 112.250  
NER  
50°21'59.61"N  
014°37'16.91"E  
1000 FT

**VLAŠIM**  
DVR/DME 114.300  
VLM  
49°42'15.38"N  
015°04'00.27"E  
500 FT

**VOŽICE**  
DVR/DME 117.0  
VOZ  
49°31'56.38"N  
014°52'28.79"E  
2200 FT

change: horizontal and vertical llmfts of LKP1