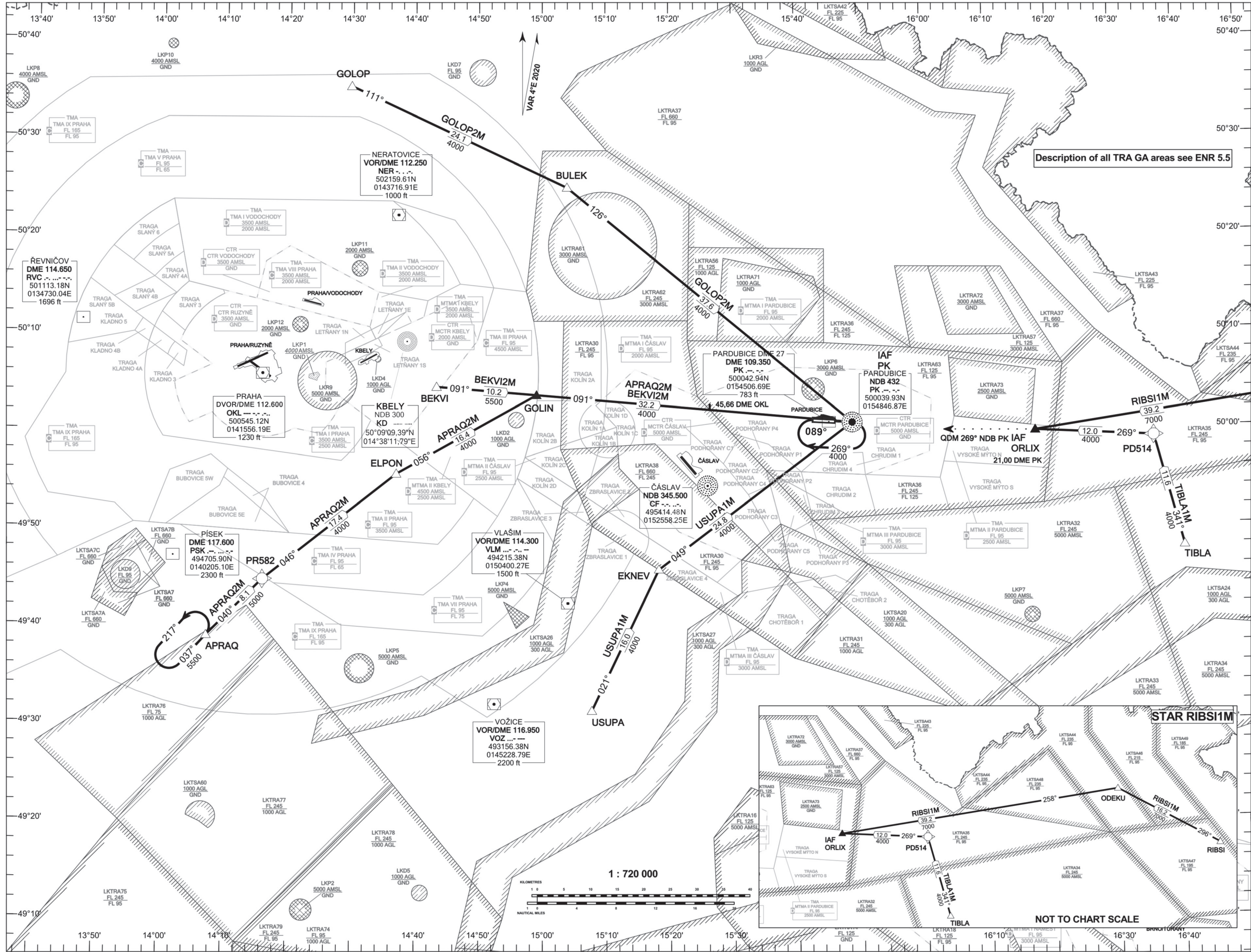


STANDARD ARRIVAL CHART- INSTRUMENT (STAR) - ICAO

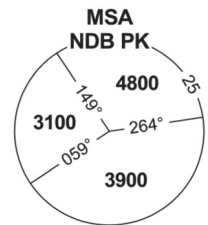
PARDUBICE (LKPD) RNAV RWY 09-27

RIBSI1M TIBLA1M USUPA1M
APRAQ2M BEKVI2M GOLOP2M



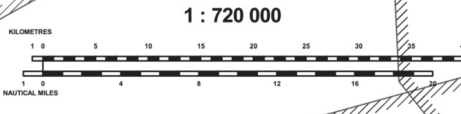
Description of all TRA GA areas see ENR 5.5

PARDUBICE RADAR	128.365
PARDUBICE TOWER	267.300 O/R
EMERGENCY FREQ	120.155
	120.205 (reserve)
	121.500



BEARINGS, TRACKS AND RADIALS ARE MAGNETIC
ALTITUDES AND ELEVATIONS ARE IN FEET
DISTANCES ARE IN NM

TRANSITION ALTITUDE
5000



Change: horizontal and vertical limits of LKP1