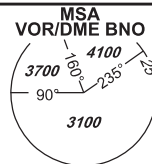
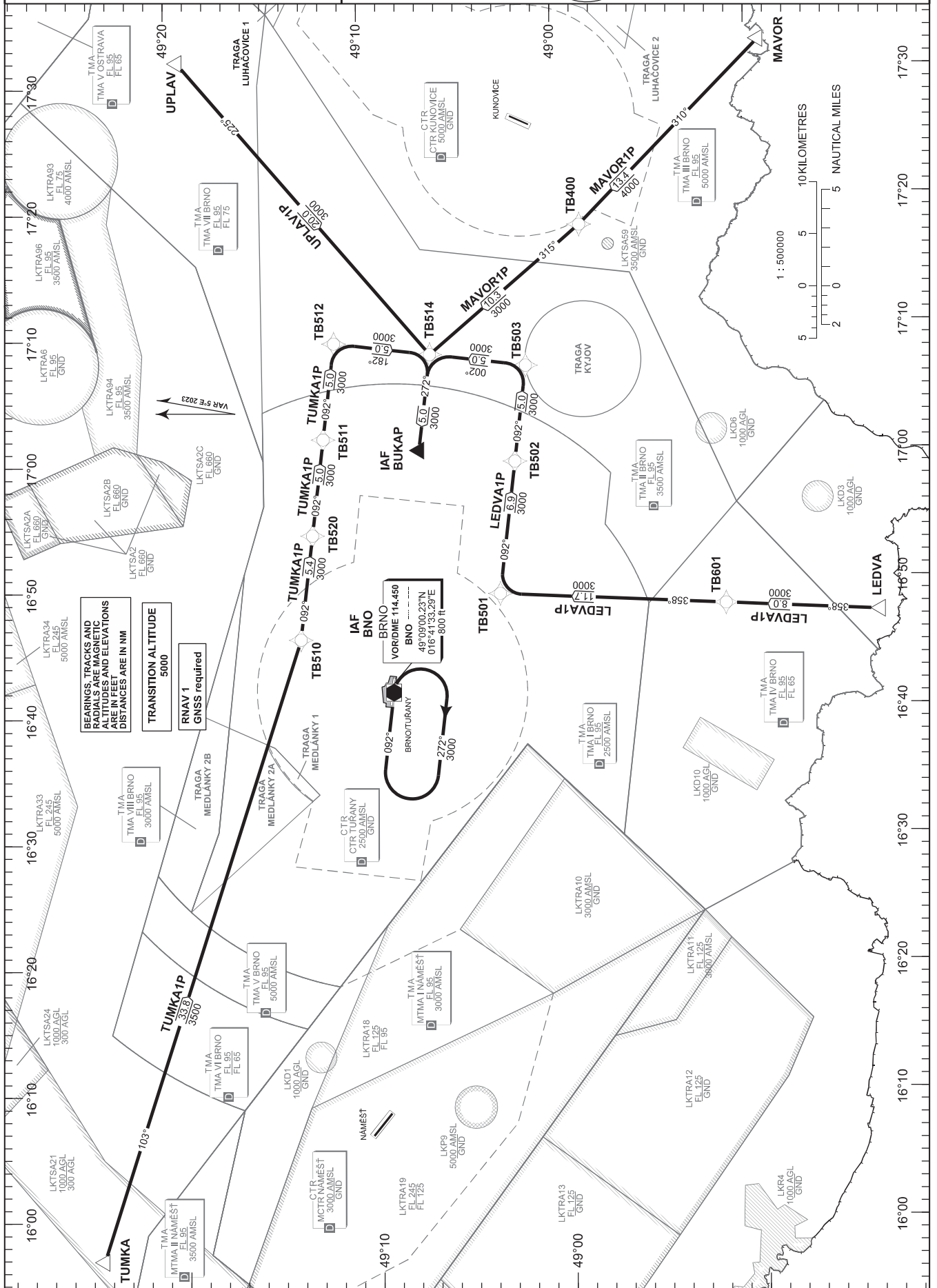


STANDARD ARRIVAL CHART- INSTRUMENT (STAR) - ICAO

PRAHA RADAR	127.350
TUŘANY TOWER	119.605
TUŘANY GROUND	125.430
TUŘANY ATIS	131.105
EMERGENCY FREQ	121.500



BRNO/TUŘANY (LKTB) RNAV RWY 27 LEDVA1P MAVOR1P TUMKA1P UPLAV1P



BEARINGS, TRACKS AND RADIALS ARE MAGNETIC ALTIITUDES AND ELEVATIONS ARE IN FEET DISTANCES ARE IN NM

TRANSITION ALTIITUDE
5000

RNAV 1
GNSS required

IAF BNO
BRNO
VORDME 114.450
BNO
49°09'00.23"N
016°41'33.29"E
800 ft

change : new LKTRA93, 94, 96; removal of LKTRA90-92