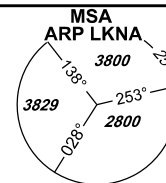


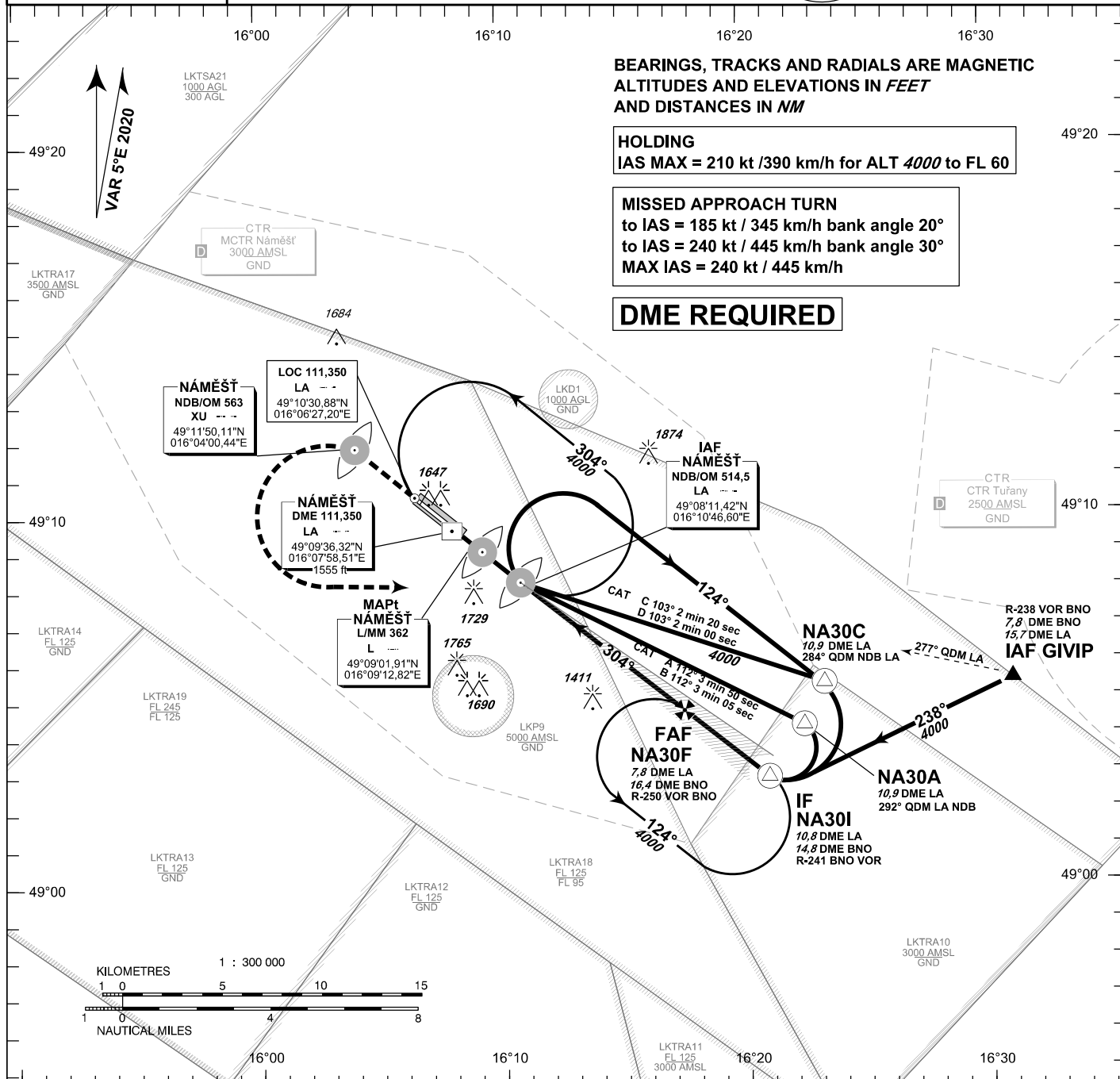
INSTRUMENT APPROACH CHART - ICAO

AERODROME ELEV 1547
THR RWY 12 ELEV 1547
THR RWY 30 ELEV 1496
OCH RELATED TO THR RWY 30

NÁMĚŠŤ RADAR 118,155
 reserve 266,200
PRECISION 283,900
 reserve 123,300
TOWER 126,505
 reserve 121,180



NÁMĚŠŤ ILS RWY 30

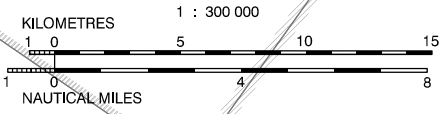


BEARINGS, TRACKS AND RADIALS ARE MAGNETIC
ALTITUDES AND ELEVATIONS IN FEET
AND DISTANCES IN NM

HOLDING
IAS MAX = 210 kt / 390 km/h for ALT 4000 to FL 60

MISSED APPROACH TURN
 to IAS = 185 kt / 345 km/h bank angle 20°
 to IAS = 240 kt / 445 km/h bank angle 30°
MAX IAS = 240 kt / 445 km/h

DME REQUIRED

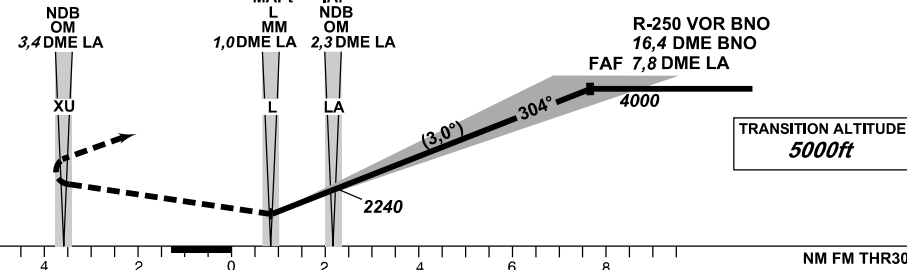


MISSED APPROACH:

Proceed to NDB XU in climbing 4000ft passing NDB XU turn left to NDB LA

ILS RDH 52,5 ft

THR 490933,73N 0160813,58E
 ELEV 1496
 DISTANCE IN NM FROM THR RWY 30



OCA/OCH		A	B	C	D			
Straight-in Approach	Cat 1	1725 / 230	1736 / 240	1745 / 249	1755 / 259			
	LOC	1840 / 344						
Circling NORTH OF AD ONLY		1936	1988	2086	2185			
DME LA NM		6,0	5,0	4,0	3,0	2,0	1,0	0,8
ALTITUDES ft		3406	3088	2769	2451	2133	1815	1752

time FAF - MAPt 6,9 NM	kt						
	81	100	122	141	162	184	
Rate of descent	min:sec	5:05	4:07	3:23	2:56	2:32	2:14
	m/s	2,2	2,7	3,3	3,8	4,4	5,0
	ft/min	433	532	650	748	866	984

change: correction of THR RWY designation

Timing is not authorized for defining the MAPt.

Seznam traťových bodů / Way point list		
LA (NDB)	49 08 12 N	016 10 47 E
L (L)	49 09 02 N	016 09 13 E
NA30A	49 04 16 N	016 22 23 E
NA30C	49 05 24 N	016 23 14 E
NA30I	49 02 52 N	016 20 55 E
NA30F	49 04 44 N	016 17 31 E
XU (NDB)	49 11 50 N	016 04 00 E