

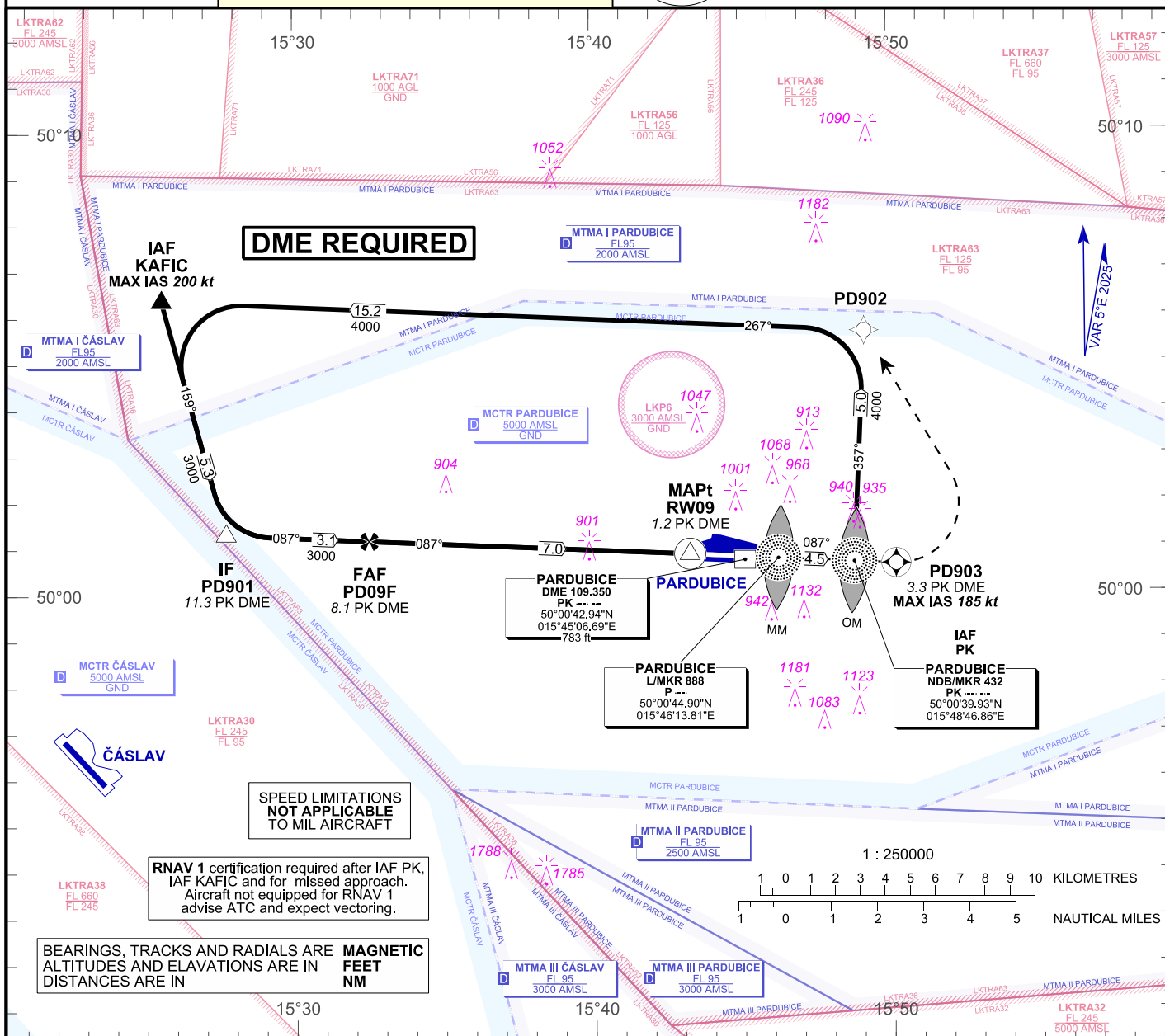
# INSTRUMENT APPROACH CHART - ICAO

PARDUBICE RADAR 128.365  
 PARDUBICE RADAR 267.300 O/R  
 PARDUBICE PRECISION 296.825 O/R  
 PARDUBICE PRECISION 123.300 O/R reserve  
 PARDUBICE TOWER 120.155  
 PARDUBICE TOWER 120.205 (reserve)



**PARDUBICE (LKPD) NDB**  
**RWY 09**

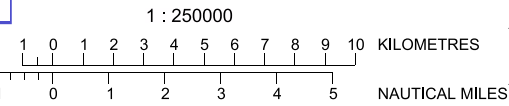
AERODROME ELEV 741 ft  
 THR RWY 09 ELEV 736 ft



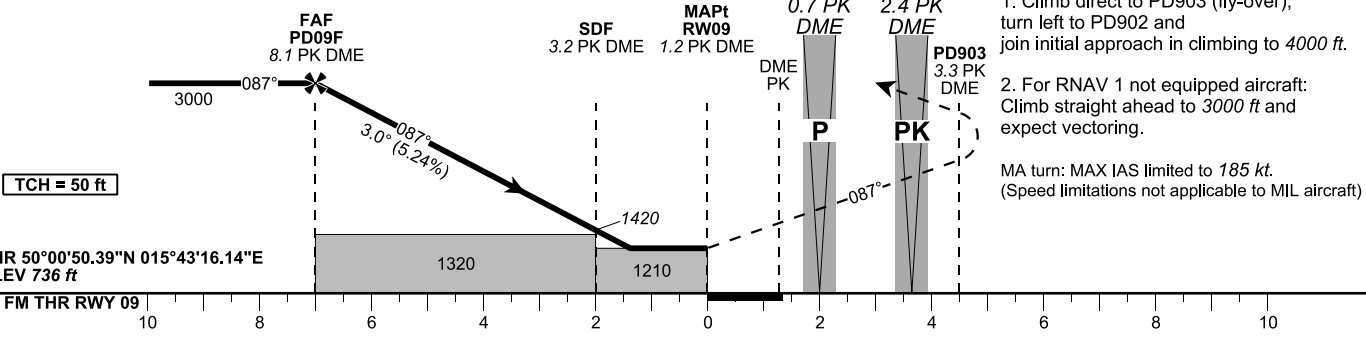
**SPEED LIMITATIONS NOT APPLICABLE TO MIL AIRCRAFT**

RNAV 1 certification required after IAF PK, IAF KAFIC and for missed approach. Aircraft not equipped for RNAV 1 advise ATC and expect vectoring.

BEARINGS, TRACKS AND RADIALS ARE ALTIMETRES AND ELAVATIONS ARE IN DISTANCES ARE IN **MAGNETIC FEET NM**



**TRANSITION ALT 5000 FT**



**MISSED APPROACH:**  
 1. Climb direct to PD903 (fly-over), turn left to PD902 and join initial approach in climbing to 4000 ft.  
 2. For RNAV 1 not equipped aircraft: Climb straight ahead to 3000 ft and expect vectoring.  
 MA turn: MAX IAS limited to 185 kt. (Speed limitations not applicable to MIL aircraft)

OCA / OCH	A	B	C	D
Straight-in Approach ft	1210 / 470			
Circling (South of AD only) ft	1250 / 510	1430 / 690	1580 / 840	1760 / 1020

Distance to PK DME NM	8	7	6	5	4	3	2
ALTITUDES ft	2950	2640	2320	2000	1680	1360	1040

	kt	80	100	120	140	160	180
FAF - MAPt 7,0 NM min:sec		5:14	4:11	3:29	3:00	2:37	2:20
Rate of descent ft/min		420	530	640	740	850	950

Change : grid added

## INITIAL APPROACH NDB RWY 09

Recommended coding:

Path Terminator	Waypoint				Course / Track MAG° (True°)	DIST NM	Turn Direction	Constraints		Nav Spec.	Remarks
	ID	Type	Flyover	Coordinates				Level	Speed		
via <b>KAFIC</b>											
IF	KAFIC	IAF	NO	500621.81N 0152533.69 E	---	---	---	A3000+	K200-	RNAV 1	---
TF	PD901	IF	NO	500118.17N 0152741.98E	159 (164.8)	5.3	---	---	---	RNAV 1	---
via <b>PK</b>											
IF	PK	IAF	NO	500039.93N 0154846.86E	---	---	---	A4000+	---	RNAV 1	---
TF	PD902	---	NO	500539.38N 0154910.07E	357 (002.9)	5.0	---	---	---	RNAV 1	---
TF	KAFIC	---	NO	500621.81N 0152533.69 E	267 (272.8)	15.2	LEFT	---	K200-	RNAV 1	---
TF	PD901	IF	NO	500118.17N 0152741.98E	159 (164.8)	5.3	LEFT	---	---	RNAV 1	---

## APPROACH NDB RWY 09

Descent angle (°)	3.00			
Type	IF	FAF	SDF	MAPt
Fix	PD901 (11,3 DME PK)	PD09F (8,1 DME PK)	(3,2 DME PK)	RW09 (1,2 DME PK)
Fix coordinates	50 01 18.17N 015 2741.98E	50 01 09.82N 015 32 30.32E	50 00 56.08N 015 40 10.31E	50 00 50.39N 015 43 16.14E
Fix formation bearing (True°)	272.82 NDB PK	272.82 NDB PK	272.83 NDB PK	272.84 NDB PK
Fix formation distances (NM)	11,25 DME PK	8,14 DME PK	3,19 DME PK	1,20 DME PK

## MISSED APPROACH NDB RWY 09

Recommended coding:

Path Terminator	Waypoint				Course / Track MAG° (True°)	DIST NM	Turn Direction	Constraints		Nav Spec.	Remarks
	ID	Type	Flyover	Coordinates				Level	Speed		
DF	PD903	MATP	YES	500037.38N 0155011.06E	---	---	---	----	K185-	RNAV 1	---
DF	PD902	---	NO	500539.38N 0154910.07E	---	---	LEFT	----	---	RNAV 1	---