

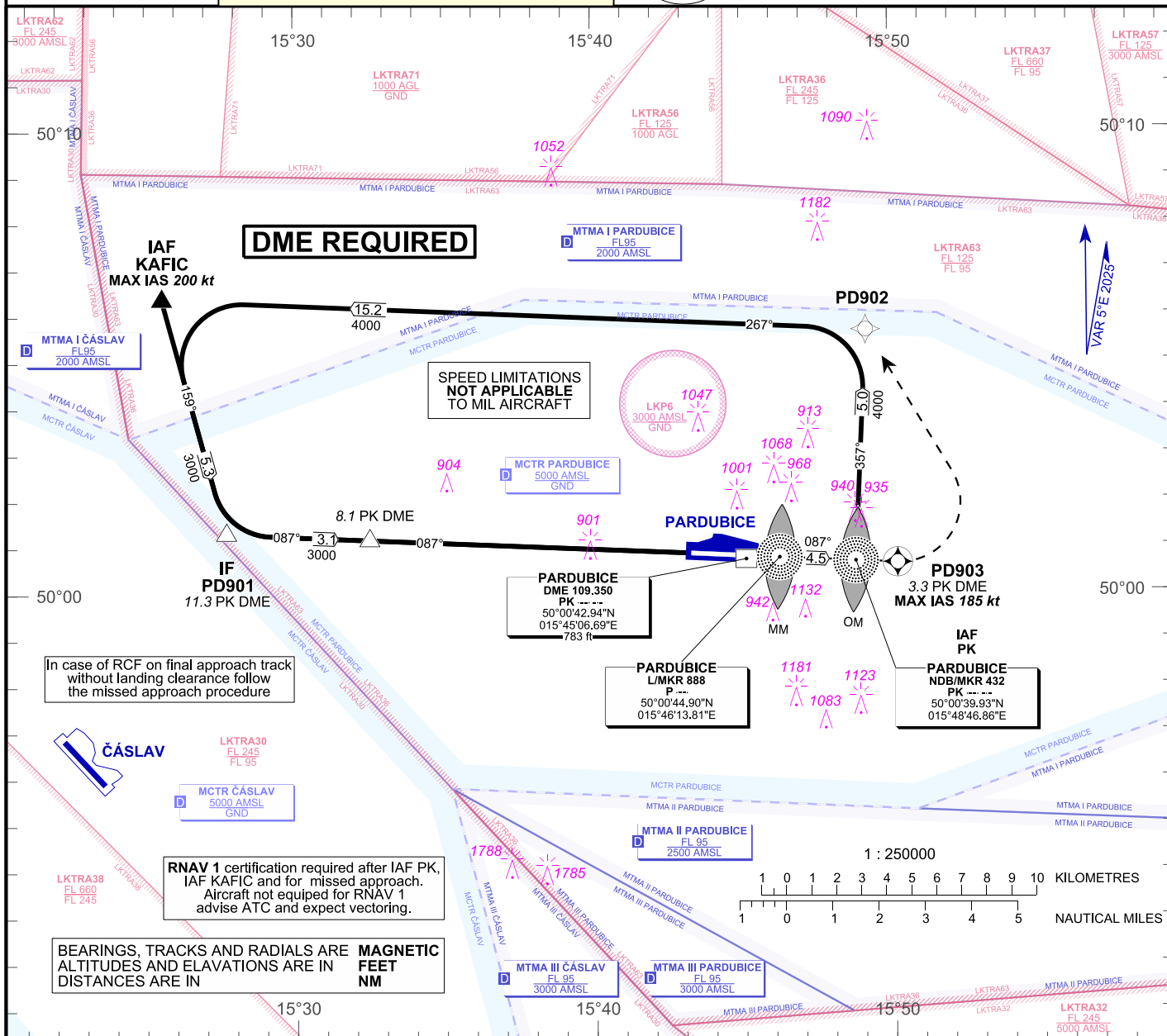
INSTRUMENT APPROACH CHART - ICAO

PARDUBICE RADAR 128.365
 PARDUBICE RADAR 267.300 O/R
 PARDUBICE PRECISION 296.825 O/R
 PARDUBICE PRECISION 123.300 O/R reserve
 PARDUBICE TOWER 120.155
 PARDUBICE TOWER 120.205 (reserve)



PARDUBICE (LKPD) PAR RWY 09

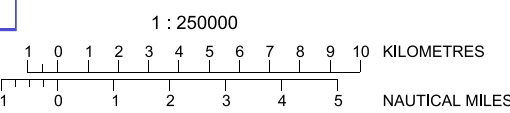
AERODROME ELEV 741 ft
 THR RWY 09 ELEV 736 ft



In case of RCF on final approach track without landing clearance follow the missed approach procedure

RNAV 1 certification required after IAF PK, IAF KAFIC and for missed approach. Aircraft not equipped for RNAV 1 advise ATC and expect vectoring.

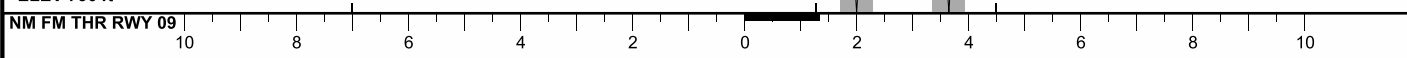
BEARINGS, TRACKS AND RADIALS ARE MAGNETIC FEET
 ALTITUDES AND ELEVATIONS ARE IN FEET
 DISTANCES ARE IN NM



TRANSITION ALT 5000 FT

TCH = 50 ft

THR 50°00'50.39"N 015°43'16.14"E
 ELEV 736 ft



- MISSED APPROACH:**
1. Climb direct to PD903 (fly-over), turn left to PD902 and join initial approach in climbing to 4000 ft.
 2. For RNAV 1 not equipped aircraft: Climb straight ahead to 3000 ft and expect vectoring.
- MA turn: MAX IAS limited to 185 kt. (Speed limitations not applicable to MIL aircraft)

| OCA / OCH | A | B | C | D |
|--------------------------------|------------|------------|------------|-------------|
| Straight-in Approach ft | 986 / 250 | | | |
| Circling (South of AD only) ft | 1250 / 510 | 1430 / 690 | 1580 / 840 | 1760 / 1020 |

| Distance to PK DME NM | 8 | 7 | 6 | 5 | 4 | 3 | 2 |
|-----------------------|------|------|------|------|------|------|------|
| ALTITUDES ft | 2950 | 2640 | 2320 | 2000 | 1680 | 1360 | 1040 |

| | kt | 80 | 100 | 120 | 140 | 160 | 180 |
|---------------------------|---------|------|------|------|------|------|------|
| 8.1 DME PK - THR09 7,0 NM | min:sec | 5:14 | 4:11 | 3:29 | 3:00 | 2:37 | 2:20 |
| Rate of descent | ft/min | 420 | 530 | 640 | 740 | 850 | 950 |

Change : grid added

INITIAL APPROACH PAR RWY 09

Recommended coding:

| Path Terminator | Waypoint | | | | Course / Track MAG° (True°) | DIST NM | Turn Direction | Constraints | | Nav Spec. | Remarks |
|------------------|----------|------|---------|------------------------|-----------------------------------|------------|-------------------|-------------|-------|--------------|---------|
| | ID | Type | Flyover | Coordinates | | | | Level | Speed | | |
| via KAFIC | | | | | | | | | | | |
| IF | KAFIC | IAF | NO | 500621.81N 0152533.69E | --- | --- | --- | A3000+ | K200- | RNAV 1 | --- |
| TF | PD901 | IF | NO | 500118.17N 0152741.98E | 159 (164.8) | 5.3 | --- | --- | --- | RNAV 1 | --- |
| via PK | | | | | | | | | | | |
| IF | PK | IAF | NO | 500039.93N 0154846.86E | --- | --- | --- | A4000+ | --- | RNAV 1 | --- |
| TF | PD902 | --- | NO | 500539.38N 0154910.07E | 357 (2.9) | 5.0 | --- | --- | --- | RNAV 1 | --- |
| TF | KAFIC | --- | NO | 500621.81N 0152533.69E | 267 (272.8) | 15.2 | LEFT | --- | K200- | RNAV 1 | --- |
| TF | PD901 | IF | NO | 500118.17N 0152741.98E | 159 (164.8) | 5.3 | LEFT | --- | --- | RNAV 1 | --- |

APPROACH PAR RWY 09

| | | |
|--------------------------------------|---------------------------|----------------------------|
| Descent angle (°) | 3.00 | |
| Type | IF | D8.1 PK |
| Fix | PD901 (11,3 DME PK) | (8,1 DME PK) |
| Fix coordinates | 50 01 18.17N 015 2741.98E | 50 01 09.82N 015 32 30.32E |
| Fix formation bearing (True°) | 272.82 NDB PK | 272.82 NDB PK |
| Fix formation distances (NM) | 11,25 DME PK | 8,14 DME PK |

MISSED APPROACH PAR RWY 09

Recommended coding:

| Path Terminator | Waypoint | | | | Course / Track MAG° (True°) | DIST NM | Turn Direction | Constraints | | Nav Spec. | Remarks |
|-----------------|----------|------|---------|------------------------|-----------------------------------|------------|-------------------|-------------|-------|--------------|---------|
| | ID | Type | Flyover | Coordinates | | | | Level | Speed | | |
| DF | PD903 | MATP | YES | 500037.38N 0155011.06E | --- | --- | --- | ---- | K185- | RNAV 1 | --- |
| DF | PD902 | --- | NO | 500539.38N 0154910.07E | --- | --- | LEFT | ---- | --- | RNAV 1 | --- |