

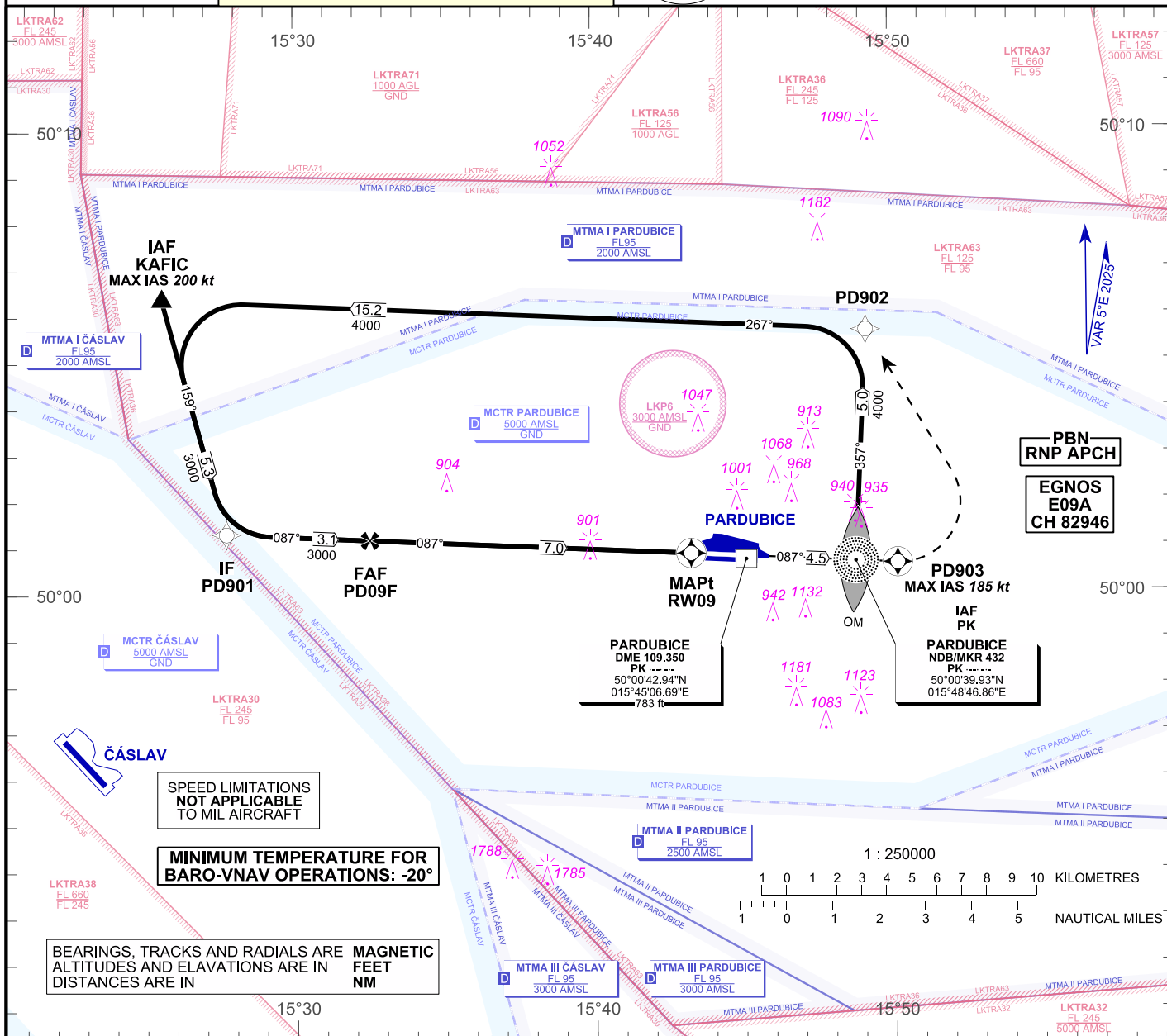
INSTRUMENT APPROACH CHART - ICAO

PARDUBICE RADAR 128.365
 PARDUBICE RADAR 267.300 O/R
 PARDUBICE PRECISION 296.825 O/R
 PARDUBICE PRECISION 123.300 O/R reserve
 PARDUBICE TOWER 120.155
 PARDUBICE TOWER 120.205 (reserve)



PARDUBICE (LKPD) RNP RWY 09

AERODROME ELEV 741 ft
 THR RWY 09 ELEV 736 ft

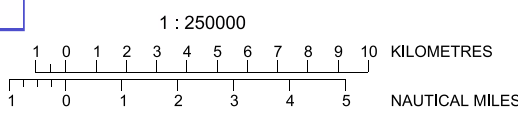


SPEED LIMITATIONS NOT APPLICABLE TO MIL AIRCRAFT

MINIMUM TEMPERATURE FOR BARO-VNAV OPERATIONS: -20°

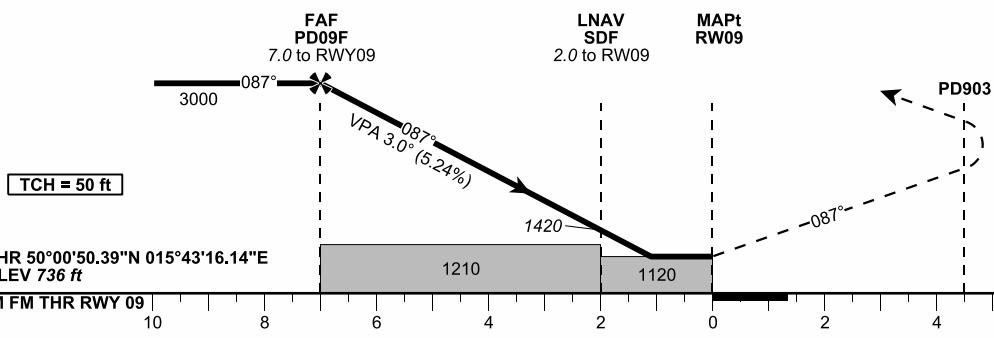
BEARINGS, TRACKS AND RADIALS ARE ALTIMETRES AND ELEVATIONS ARE IN DISTANCES ARE IN

MAGNETIC FEET NM



TRANSITION ALT 5000 FT

MISSED APPROACH:
 Climb straight ahead to PD903 (fly-over), turn left to PD902 and join initial approach in climbing to 4000 ft.
 MA turn: MAX IAS limited to 185 kt.
 (Speed limitations not applicable to MIL aircraft)



OCA / OCH	A	B	C	D
LNAV	ft	1120 / 380		
LNAV / VNAV	ft	1037 / 301		
LPV	ft	986 / 250		
Circling (South of AD only)	ft	1250 / 510	1430 / 690	1580 / 840

DIST to THR (RWY09)	NM	7	6	5	4	3	2	1
ALTITUDES	ft	3000	2700	2380	2060	1740	1420	1100
	kt	80	100	120	140	160	180	
FAF - MAPt 7,0 NM	min:sec	5:14	4:11	3:29	3:00	2:37	2:20	
Rate of descent	ft/min	420	530	640	740	850	950	

Change : grid added

APPROACH RNP RWY 09

Recommended coding:

Path Terminator	Waypoint				Course / Track MAG° (True°)	DIST NM	Turn Direction	Constraints		Nav Spec.	Remarks
	ID	Type	Flyover	Coordinates				Level	Speed		
via KAFIC											
IF	KAFIC	IAF	NO	500621.81N 0152533.69E	---	---	---	A3000+	K200-	RNP APCH	---
TF	PD901	IF	NO	500118.17N 0152741.98E	159 (164.8)	5.3	---	---	---	RNP APCH	---
TF	PD09F	FAF	NO	500109.82N 0153230.32E	087 (092.5)	3.1	LEFT	A3000+	---	RNP APCH	---
TF	RW09	MAPt	YES	500050.39N 0154316.14E	087 (092.6)	7.0	---	----	---	RNP APCH	---
TF	PD903	MATP	YES	500037.38N 0155011.06E	087 (092.7)	4.5	---	----	K185-	RNP APCH	---
DF	PD902	---	NO	500539.38N 0154910.07E	---	---	LEFT	----	---	RNP APCH	---
via PK											
IF	PK	IAF	NO	500039.93N 0154846.86E	---	---	---	A4000+	---	RNP APCH	---
TF	PD902	---	NO	500539.38N 0154910.07E	357 (002.9)	5.0	---	---	---	RNP APCH	---
TF	KAFIC	---	NO	500621.81N 0152533.69E	267 (272.8)	15.2	LEFT	---	K200-	RNP APCH	---
TF	PD901	IF	NO	500118.17N 0152741.98E	159 (164.8)	5.3	LEFT	---	---	RNP APCH	---
TF	PD09F	FAF	NO	500109.82N 0153230.32E	087 (092.5)	3.1	LEFT	A3000+	---	RNP APCH	---
TF	RW09	MAPt	YES	500050.39N 0154316.14E	087 (092.6)	7.0	---	----	---	RNP APCH	---
TF	PD903	MATP	YES	500037.38N 0155011.06E	087 (092.7)	4.5	---	----	K185-	RNP APCH	---
DF	PD902	---	NO	500539.38N 0154910.07E	---	---	LEFT	----	---	RNP APCH	---

Input Data

Operation Type	0
SBAS Provider	1 (EGNOS)
Airport Identifier	LKPD
Runway	09
Runway Letter	0 (None)
Approach Performance Designator	0
Route Indicator	
Reference Path Data Selector	0
Reference Path Identifier	E09A
LTP/FTP Latitude	500050.3900N
LTP/FTP Longitude	0154316.1400E
LTP/FTP Ellipsoidal Height (metres)	268.4
FPAP Latitude	500046.5000N
Delta FPAP Latitude (seconds)	-3.8900
FPAP Longitude	0154521.5600E
Delta FPAP Longitude (seconds)	125.4200
Threshold Crossing Height	50.0
TCH Units Selector	0 (feet)
Glidepath Angle (degrees)	3.00
Course Width (metres)	105.00
Length Offset (metres)	0
HAL (metres)	40.0
VAL (metres)	35.0

Output Data

Data Block	10 04 10 0B 0C 09 00 00 01 39 32 05 AC B3 76 15 58 2D BF 06 7C 1E 9C E1 FF D8 D3 03 F4 01 2C 01 64 00 C8 AF BC 6C D3 59
Calculated CRC Value	BC6CD359

Required Additional Data

ICAO Code	LK
LTP/FTP Orthometric Height (metres)	224.3