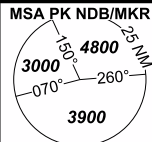


INSTRUMENT APPROACH CHART - ICAO

PARDUBICE RADAR 128.365
 PARDUBICE RADAR 267.300 O/R
 PARDUBICE PRECISION 296.825 O/R
 PARDUBICE PRECISION 123.300 O/R reserve
 PARDUBICE TOWER 120.155
 PARDUBICE TOWER 120.205 (reserve)



PARDUBICE (LKPD) RNP Z (CAT A, B)

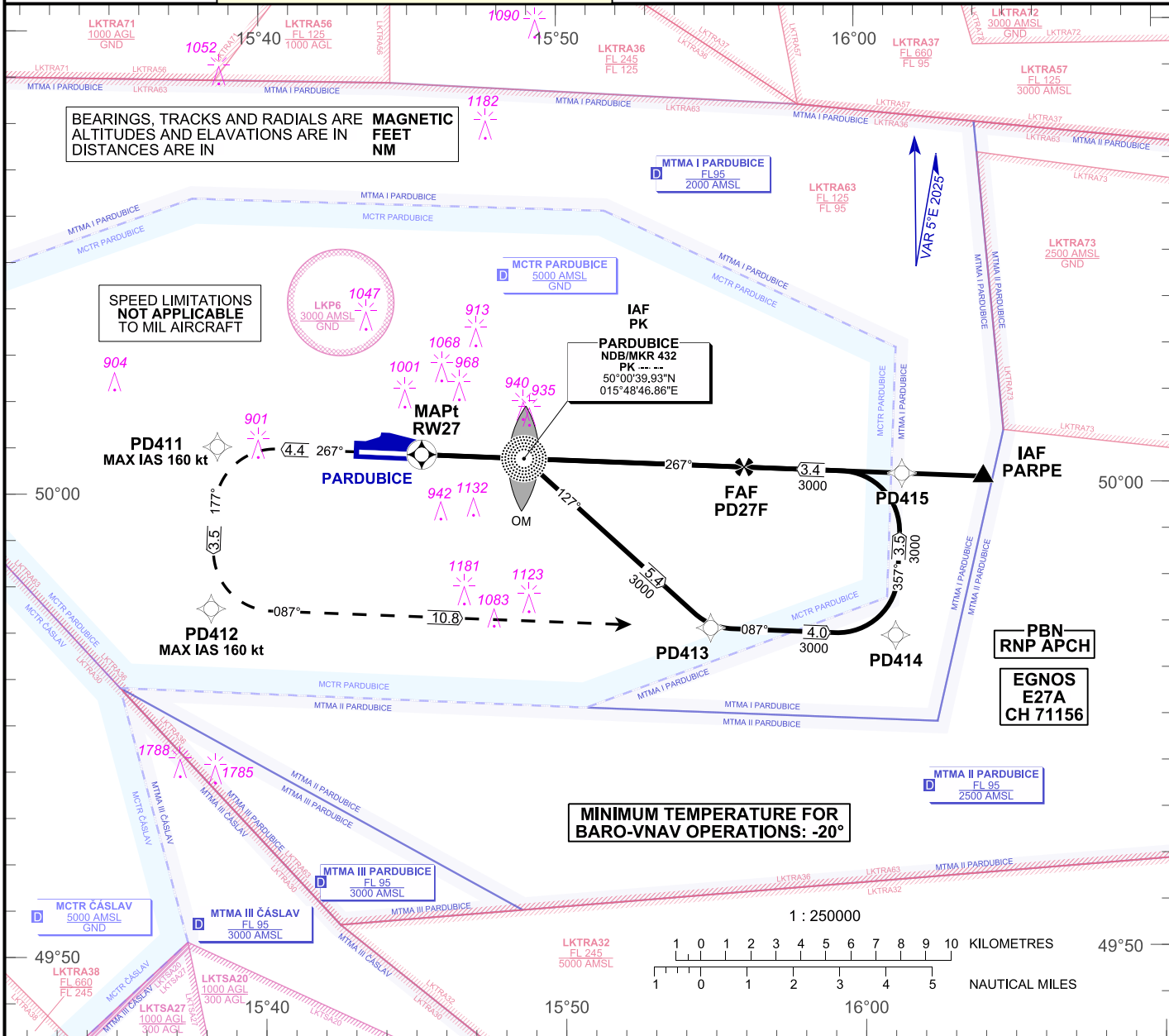
RWY 27

AERODROME ELEV 741 ft
 THR RWY 27 ELEV 731 ft

BEARINGS, TRACKS AND RADIALS ARE MAGNETIC
 ALTITUDES AND ELAVATIONS ARE IN FEET
 DISTANCES ARE IN NM

SPEED LIMITATIONS NOT APPLICABLE TO MIL AIRCRAFT

MINIMUM TEMPERATURE FOR BARO-VNAV OPERATIONS: -20°

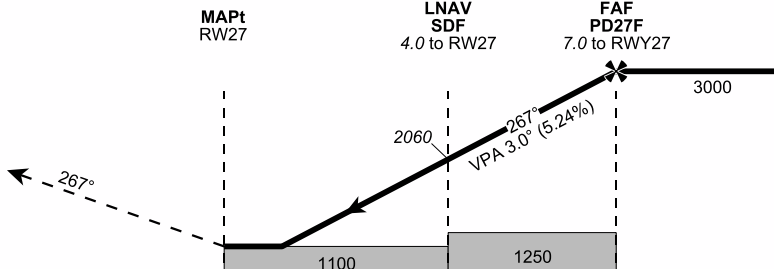


MISSED APPROACH:
 Climb straight ahead to PD411,
 turn left to PD412,
 turn left to PD413
 and join initial approach via PD414
 in climbing to 3000 ft.

MA turn: MAX IAS limited to 160 kt.
 (Speed limitations not applicable to MIL aircraft)

THR 50°00'46.50"N 015°45'21.56"E
 ELEV 731 ft

TRANSITION ALT
 5000 FT



OCA / OCH	A	B
LNAV	ft 1100 / 370	
LNAV / VNAV	ft 1035 / 304	
LPV	ft 931 / 200	
Circling (South of AD only)	ft 1250 / 510	1430 / 690

DIST to THR (RW27)	NM	7	6	5	4	3	2	1
ALTITUDES	ft	3000	2690	2360	2050	1730	1410	1100

	kt	80	100	120	140	160	180
FAF - MAPt 7,0 NM	min:sec	5:14	4:11	3:30	3:00	2:37	2:20
Rate of descent	ft/min	420	530	640	740	850	950

Change : VAR, MSA, flight procedures

APPROACH RNP Z RWY 27

Recommended coding:

Path Terminator	Waypoint				Course / Track MAG° (True°)	DIST NM	Turn Direction	Constraints		Nav Spec.	Remarks
	ID	Type	Flyover	Coordinates				Level	Speed		
via PARPE											
IF	PARPE	IF/IAF	NO	500009.87N 0160409.11E	---	---	---	A3000+	---	RNP APCH	---
TF	PD27F	FAF	NO	500025.82N 0155608.92E	267 (273.0)	5.2	---	A3000+	---	RNP APCH	---
TF	RW27	MAPt	YES	500046.50N 0154521.56E	267 (272.9)	7.0	---	----	---	RNP APCH	---
TF	PD411	MATP	NO	500059.09N 0153830.89E	267 (272.8)	4.4	---	----	K160-	RNP APCH	---
TF	PD412	---	NO	495729.52N 0153816.69E	177 (182.7)	3.5	LEFT	----	K160-	RNP APCH	---
TF	PD413	---	NO	495658.10N 0155457.88E	087 (092.7)	10.8	LEFT	----	---	RNP APCH	---
via PK											
IF	PK	IAF	NO	500039.93N 0154846.86E	---	---	---	A3000+	---	RNP APCH	---
TF	PD413	---	NO	495658.10N 0155457.88E	127 (132.8)	5.4	---	---	---	RNP APCH	---
TF	PD414	---	NO	494645.85 0160108.96E	087 (092.9)	4.0	LEFT	---	---	RNP APCH	---
TF	PD415	---	NO	500015.36N 0160125.81E	357 (003.0)	3.5	LEFT	---	---	RNP APCH	---
TF	PD27F	FAF	NO	500025.82N 0155608.92E	267 (273.0)	3.4	LEFT	A3000+	---	RNP APCH	---
TF	RW27	MAPt	YES	500046.50N 0154521.56E	267 (272.9)	7.0	---	----	---	RNP APCH	---
TF	PD411	MATP	NO	500059.09N 0153830.89E	267 (272.8)	4.4	---	----	K160-	RNP APCH	---
TF	PD412	---	NO	495729.52N 0153816.69E	177 (182.7)	3.5	LEFT	----	K160-	RNP APCH	---
TF	PD413	---	NO	495658.10N 0155457.88E	087 (092.7)	10.8	LEFT	----	---	RNP APCH	---

Input Data

Operation Type	0
SBAS Provider	1 (EGNOS)
Airport Identifier	LKPD
Runway	27
Runway Letter	0 (None)
Approach Performance Designator	0
Route Indicator	Z
Reference Path Data Selector	0
Reference Path Identifier	E27A
LTP/FTP Latitude	500046.5000N
LTP/FTP Longitude	0154521.5600E
LTP/FTP Ellipsoidal Height (metres)	267.0
FPAP Latitude	500050.4400N
Delta FPAP Latitude (seconds)	3.9400
FPAP Longitude	0154314.5700E
Delta FPAP Longitude (seconds)	-126.9900
Threshold Crossing Height	50.0
TCH Units Selector	0 (feet)
Glidepath Angle (degrees)	3.00
Course Width (metres)	105.00
Length Offset (metres)	32
HAL (metres)	40.0
VAL (metres)	35.0

Output Data

Data Block	10 04 10 0B 0C 1B D0 00 01 37 32 05 48 95 76 15 30 01 C3 06 6E 1E C8 1E 00 E4 1F FC F4 01 2C 01 64 04 C8 AF DD 23 BB C0
Calculated CRC Value	DD23BBC0

Required Additional Data

ICAO Code	LK
LTP/FTP Orthometric Height (metres)	222.9