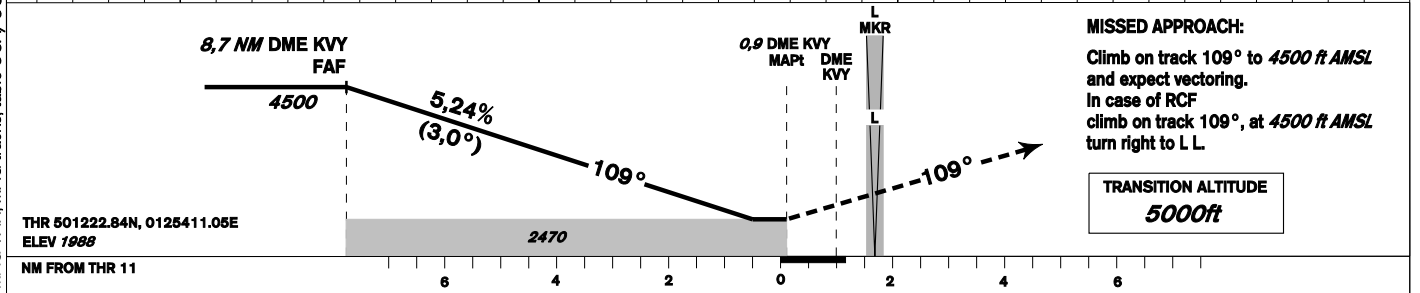
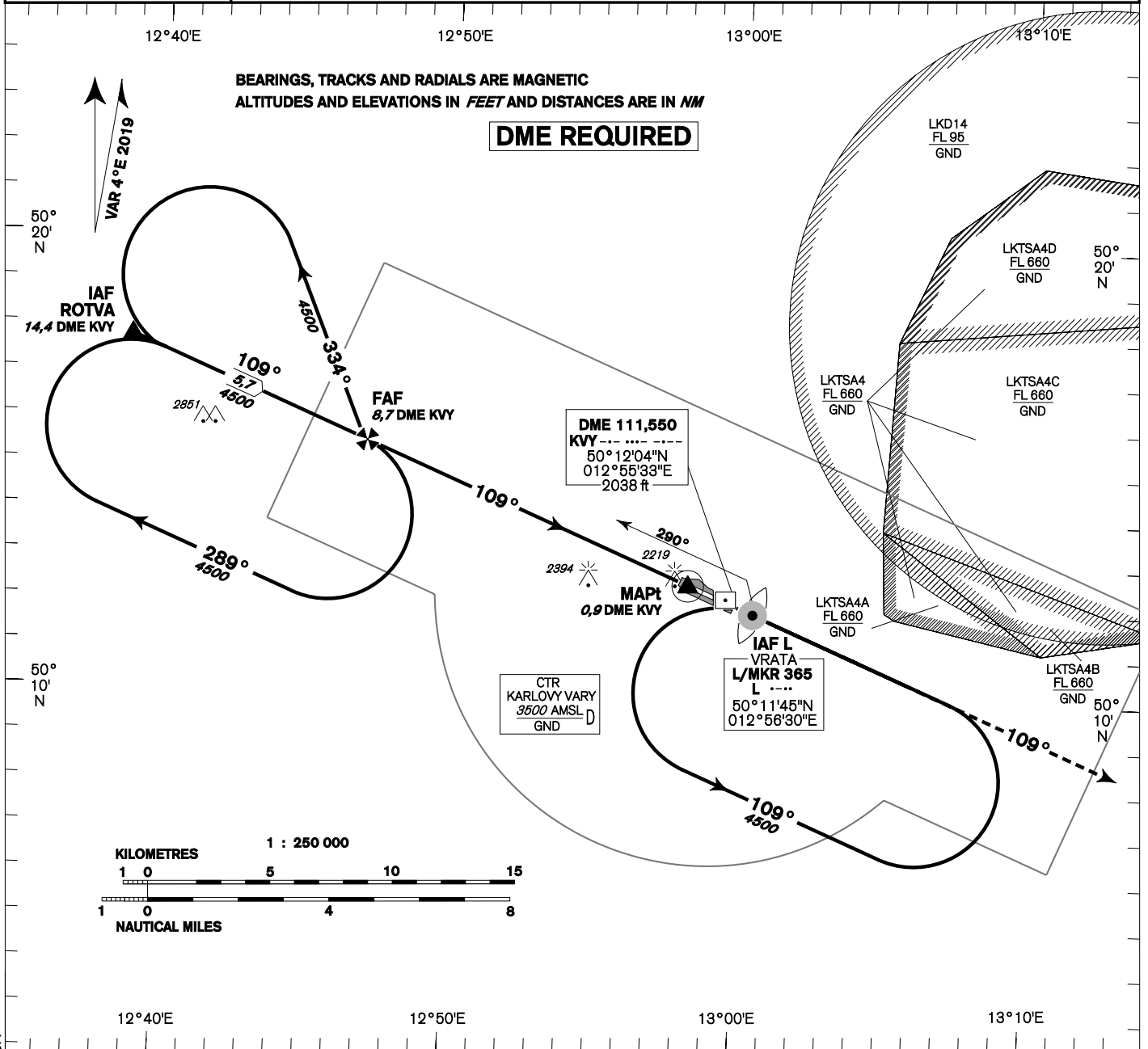
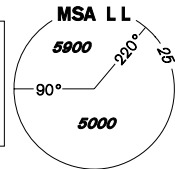


INSTRUMENT APPROACH CHART - ICAO	AERODROME ELEV 1989 THR RWY 11 ELEV 1988 OCH RELATED TO ARP	KARLOVY VARY APPROACH/RADAR 118,650 119,955 KARLOVY VARY TOWER 121,230 121,500	KARLOVY VARY NDB RWY 11
---	---	--	--



MISSED APPROACH:
Climb on track 109° to 4500 ft AMSL and expect vectoring. In case of RCF climb on track 109°, at 4500 ft AMSL turn right to L L.

TRANSITION ALTITUDE
5000ft

OCA/OCH		A	B	C	D
Straight-in Approach	ft	2470/480			
Circling (south of AD only)	ft	2520/530	2520/530	2970/980	3160/1170

DME KVV NM	7	6	5	4	3	2
DIST THR (MAPt)	6,1	5,1	4,1	3,1	2,1	1,1
ALTITUDES ft	3970	3650	3330	3010	2700	2380

FAF - MAPt 7,7 NM	kt	80	100	120	140	160	180
Rate of descent (5,24%)	min:sec	5:48	4:38	3:52	3:19	2:54	2:35
	ft/min	420	530	640	740	850	960

Timing is not authorised for determining the MAPt

change: MAG VAR, MAG tracks, table OCA/OCH