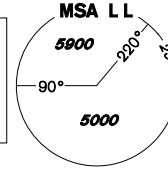


INSTRUMENT APPROACH CHART - ICAO

AERODROME ELEV 1989
THR RWY 11 ELEV 1988
OCH RELATED TO ARP

PRAHA RADAR 118,650
VARY TOWER 121,230
121,500

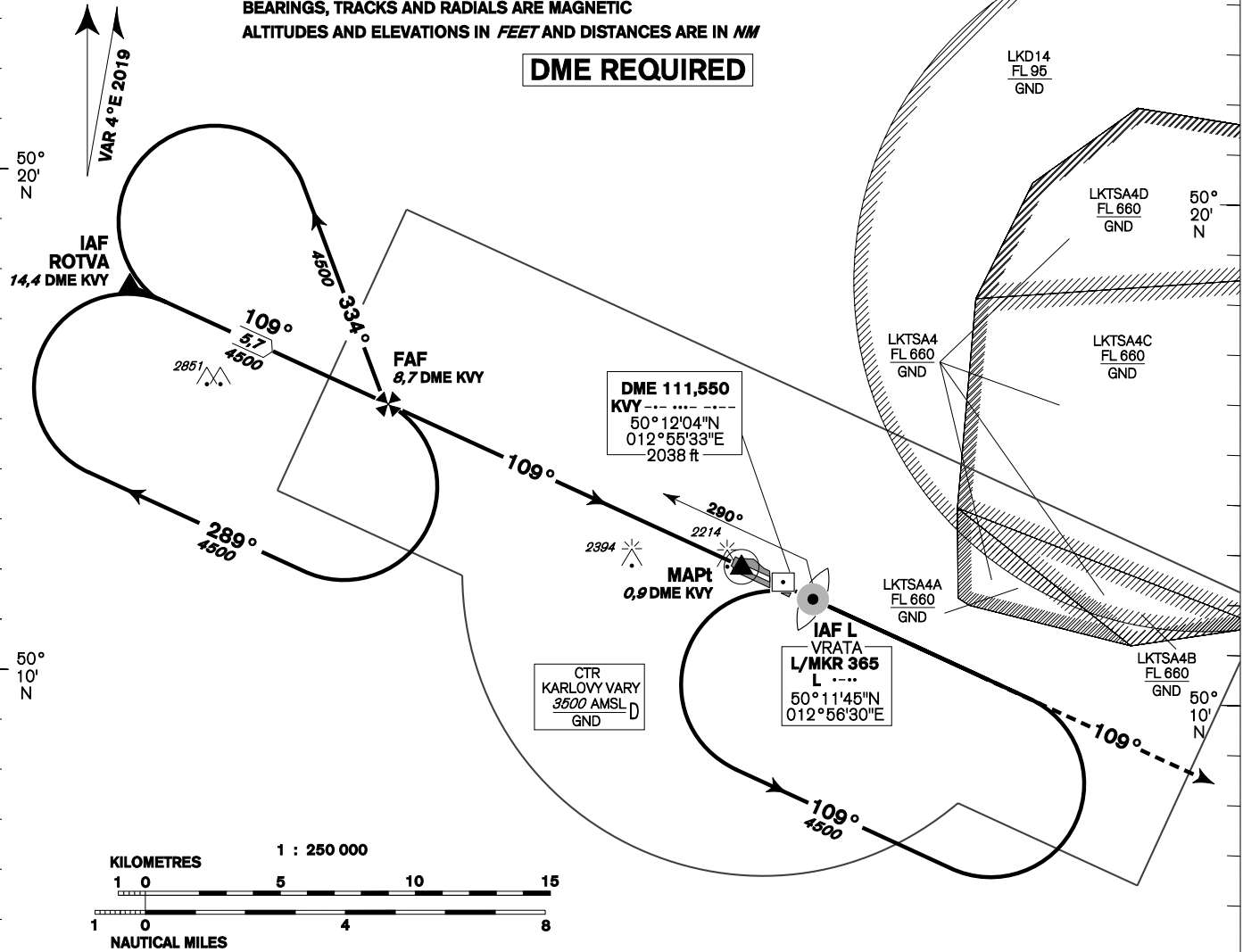


KARLOVY VARY NDB RWY 11

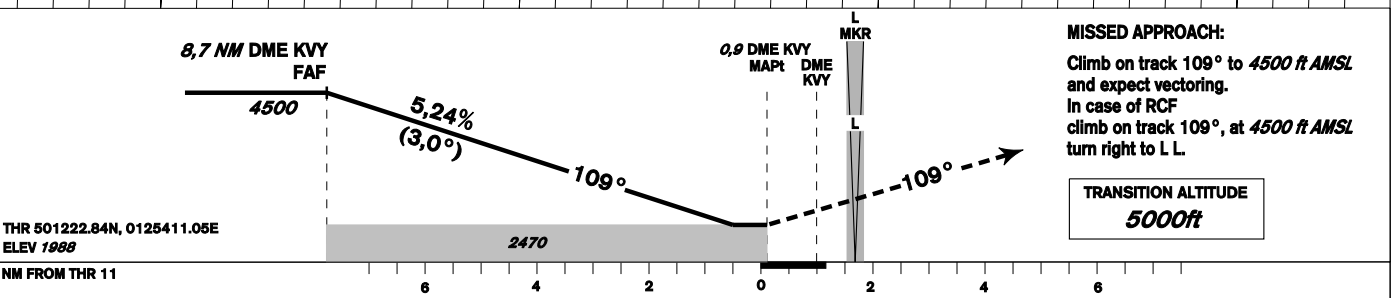
12°40'E 12°50'E 13°00'E 13°10'E

BEARINGS, TRACKS AND RADIALS ARE MAGNETIC
ALTITUDES AND ELEVATIONS IN FEET AND DISTANCES ARE IN NM

DME REQUIRED



12°40'E 12°50'E 13°00'E 13°10'E



OCA/OCH		A	B	C	D
Straight - in Approach	ft	2470/480			
Circling (south of AD only)	ft	2520/530	2520/530	2970/980	3160/1170

DME KVV NM	7	6	5	4	3	2
DIST THR (MAPt)	6,1	5,1	4,1	3,1	2,1	1,1
ALTITUDES ft	3970	3650	3330	3010	2700	2380

	kt	80	100	120	140	160	180
FAF - MAPt 7,7 NM	min:sec	5:48	4:38	3:52	3:19	2:54	2:35
Rate of descent (5,24%)	ft/min	420	530	640	740	850	960

Timing is not authorised for determining the MAPt

change: FREQ CallSign KARLOVY VARY RADAR to PRAHA RADAR, KARLOVY VARY TOWER to VARY TOWER