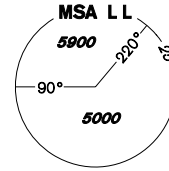


# INSTRUMENT APPROACH CHART - ICAO

AERODROME ELEV 1989  
THR RWY 11 ELEV 1988  
OCH RELATED TO THR RWY 11

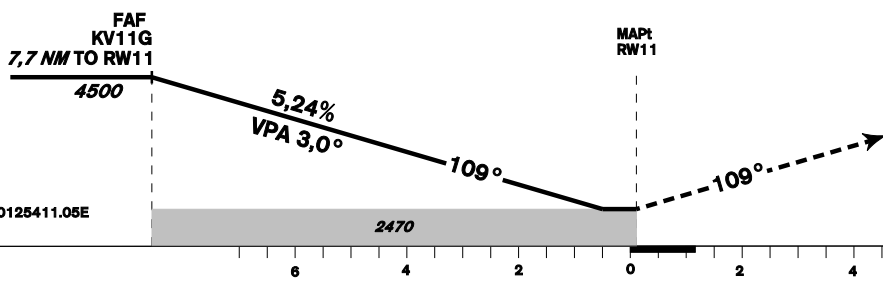
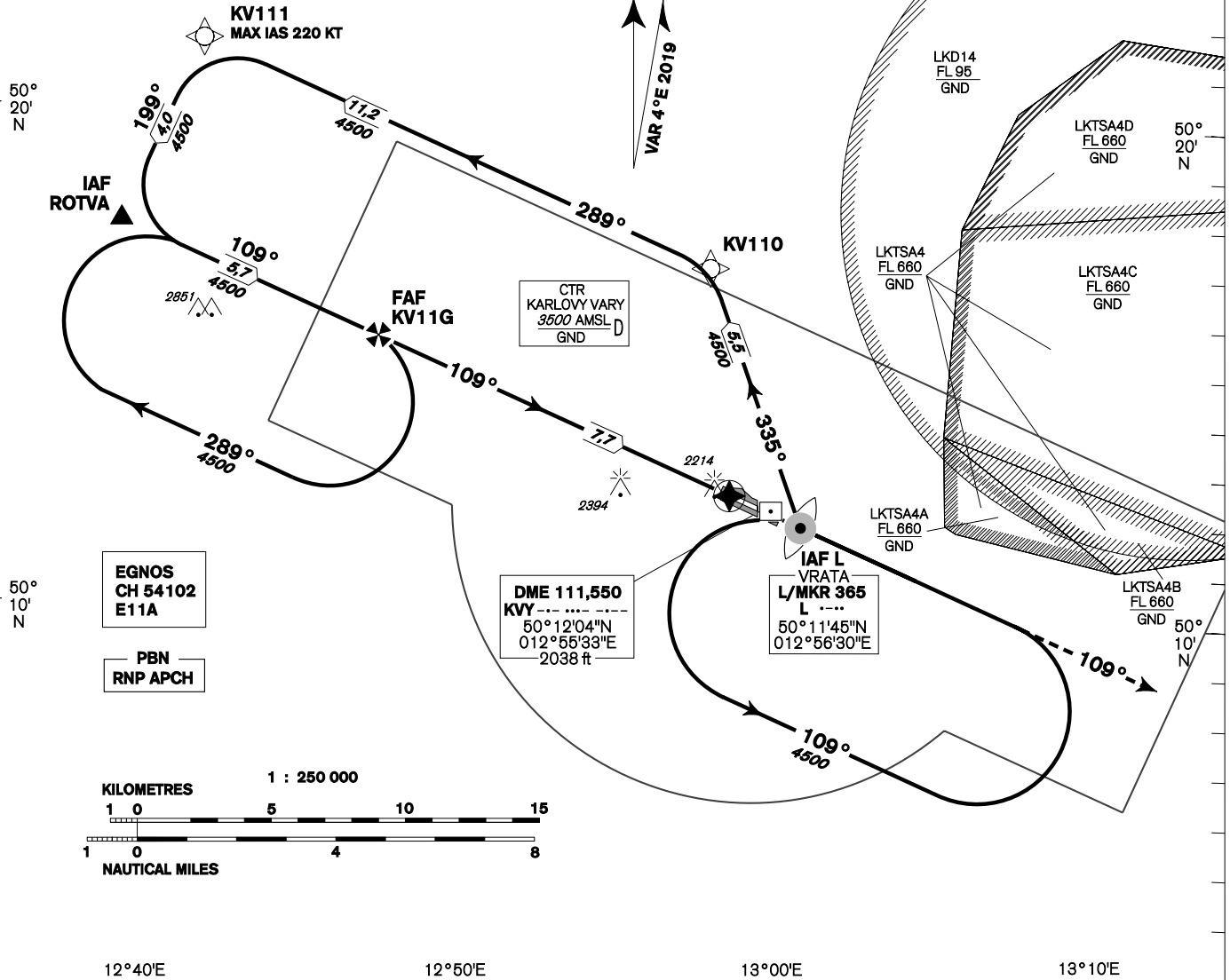
PRAHA RADAR 118,650  
VARY TOWER 121,230  
121,500



**KARLOVY VARY  
RNP  
RWY 11**

**MINIMUM TEMPERATURE FOR  
BARO-VNAV OPERATIONS: -20°C**

BEARINGS, TRACKS AND RADIALS ARE MAGNETIC  
ALTITUDES AND ELEVATIONS IN FEET AND DISTANCES ARE IN NM



**MISSED APPROACH:**  
Climb on track 109° to 4500 ft AMSL and expect vectoring.  
In case of RCF climb on track 109°, at 4500 ft AMSL turn right to L.L.

TRANSITION ALTITUDE **5000ft** RDH 49,2

OCA/OCH	A	B	C	D
LNAV	ft 2470/480			
LNAV / VNAV	ft 2380/392			
LPV	ft 2349/361	ft 2361/373	ft 2369/381	ft 2380/392
Circling (south of AD only)	ft 2520/530	ft 2520/530	ft 2970/980	ft 3160/1170

DIST THR (MAPt)	7	6	5	4	3	2
ALTITUDES ft	4280	3940	3630	3310	2990	2670
FAF - MAPt 7,7 NM	kt 80	kt 100	kt 120	kt 140	kt 160	kt 180
Rate of descent (5,24%)	min:sec 5:48	min:sec 4:39	min:sec 3:52	min:sec 3:19	min:sec 2:54	min:sec 2:35
	ft/min 420	ft/min 530	ft/min 640	ft/min 740	ft/min 850	ft/min 960

Timing is not authorised for determining the MAPt

change: FRECO CallSign KARLOVY VARY RADAR to PRAHA RADAR, KARLOVY VARY TOWER to VARY TOWER