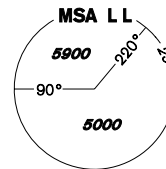


# INSTRUMENT APPROACH CHART - ICAO

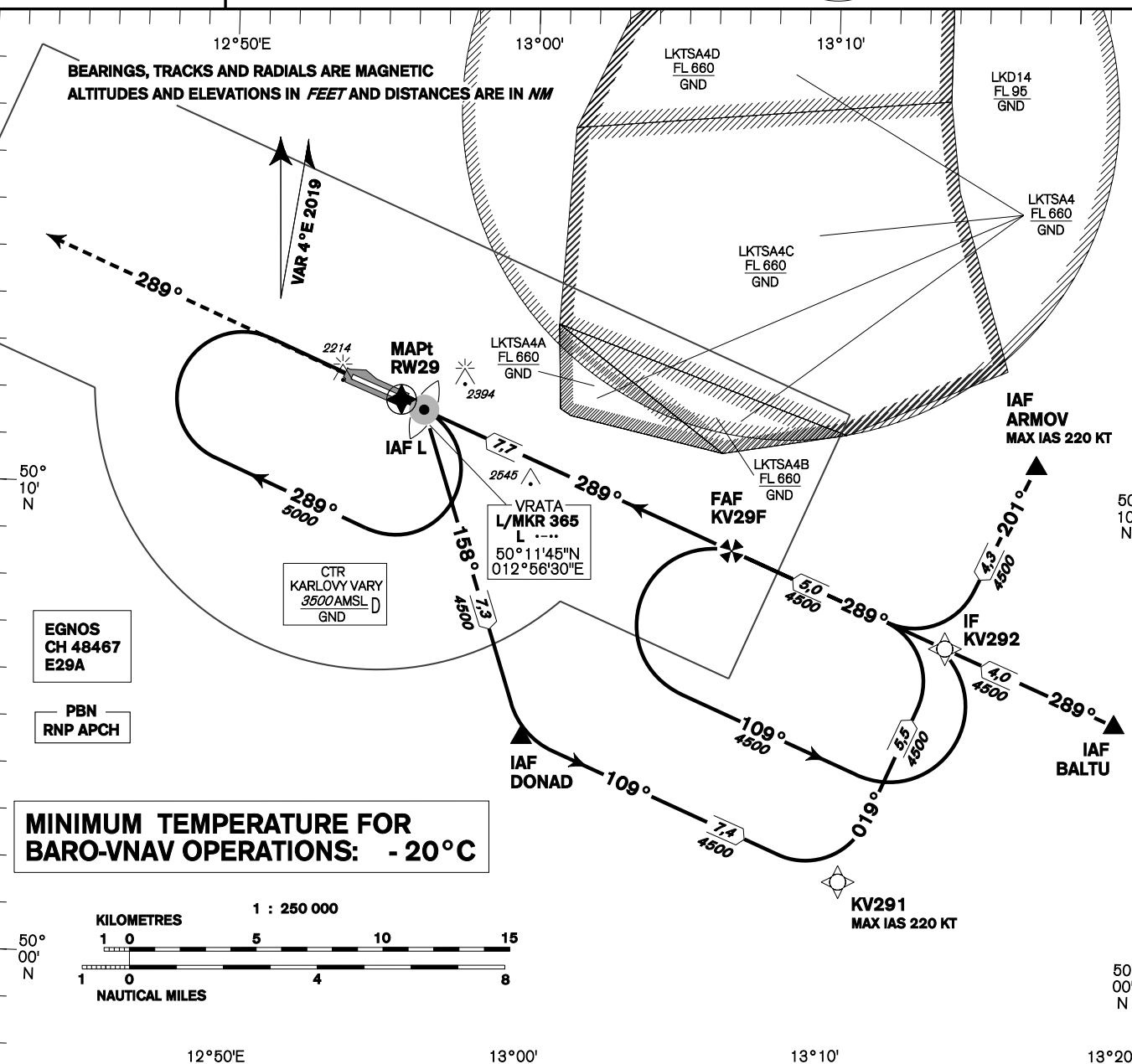
AERODROME ELEV 1989  
THR RWY 29 ELEV 1985  
OCH RELATED TO THR RWY 29

PRAHA RADAR 118,650  
VARY TOWER 121,230  
121,500

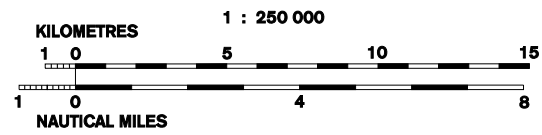


# KARLOVY VARY RNP RWY 29

BEARINGS, TRACKS AND RADIALS ARE MAGNETIC  
ALTITUDES AND ELEVATIONS IN FEET AND DISTANCES ARE IN NM

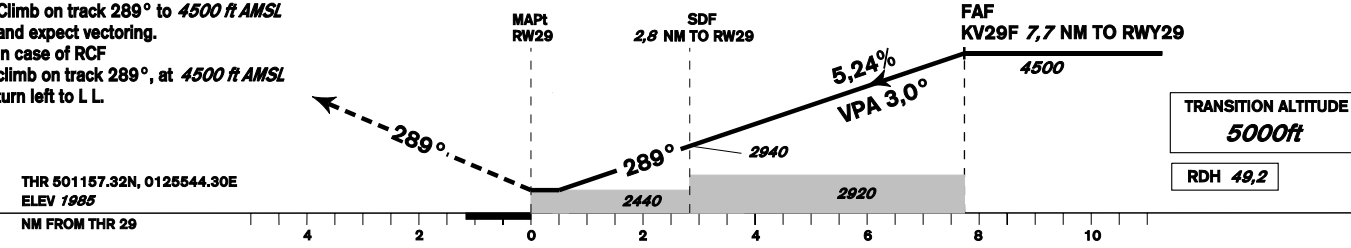


**MINIMUM TEMPERATURE FOR  
BARO-VNAV OPERATIONS: -20°C**



**MISSED APPROACH:**

Climb on track 289° to 4500 ft AMSL and expect vectoring.  
In case of RCF climb on track 289°, at 4500 ft AMSL turn left to L L.



| OCA/OCH                     |    | A         | B         | C         | D          |
|-----------------------------|----|-----------|-----------|-----------|------------|
| LNAV                        | ft | 2440/ 450 |           |           |            |
| LNAV / VNAV                 | ft | 2419/ 432 |           |           |            |
| LPV                         | ft | 2238/ 250 | 2243/ 255 | 2251/ 263 | 2261/ 274  |
| Circling (south of AD only) | ft | 2520/ 530 | 2520/ 530 | 2970/ 980 | 3160/ 1170 |

| DIST THR (MAPt)         | 7       | 6    | 5    | 4    | 3    | 2    | 1    |
|-------------------------|---------|------|------|------|------|------|------|
| ALTITUDES ft            | 4260    | 3940 | 3630 | 3310 | 2990 | 2670 | 2350 |
| FAF - MAPt 7,7 NM       | kt      | 80   | 100  | 120  | 140  | 160  | 180  |
| Rate of descent (5,24%) | min:sec | 5:48 | 4:39 | 3:52 | 3:19 | 2:54 | 2:35 |
|                         | ft/min  | 420  | 530  | 640  | 740  | 850  | 960  |

Timing is not authorised for determining the MAPt

change: FREC CallSign KARLOVY VARY RADAR to PRAHA RADAR, KARLOVY VARY TOWER to VARY TOWER