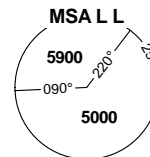
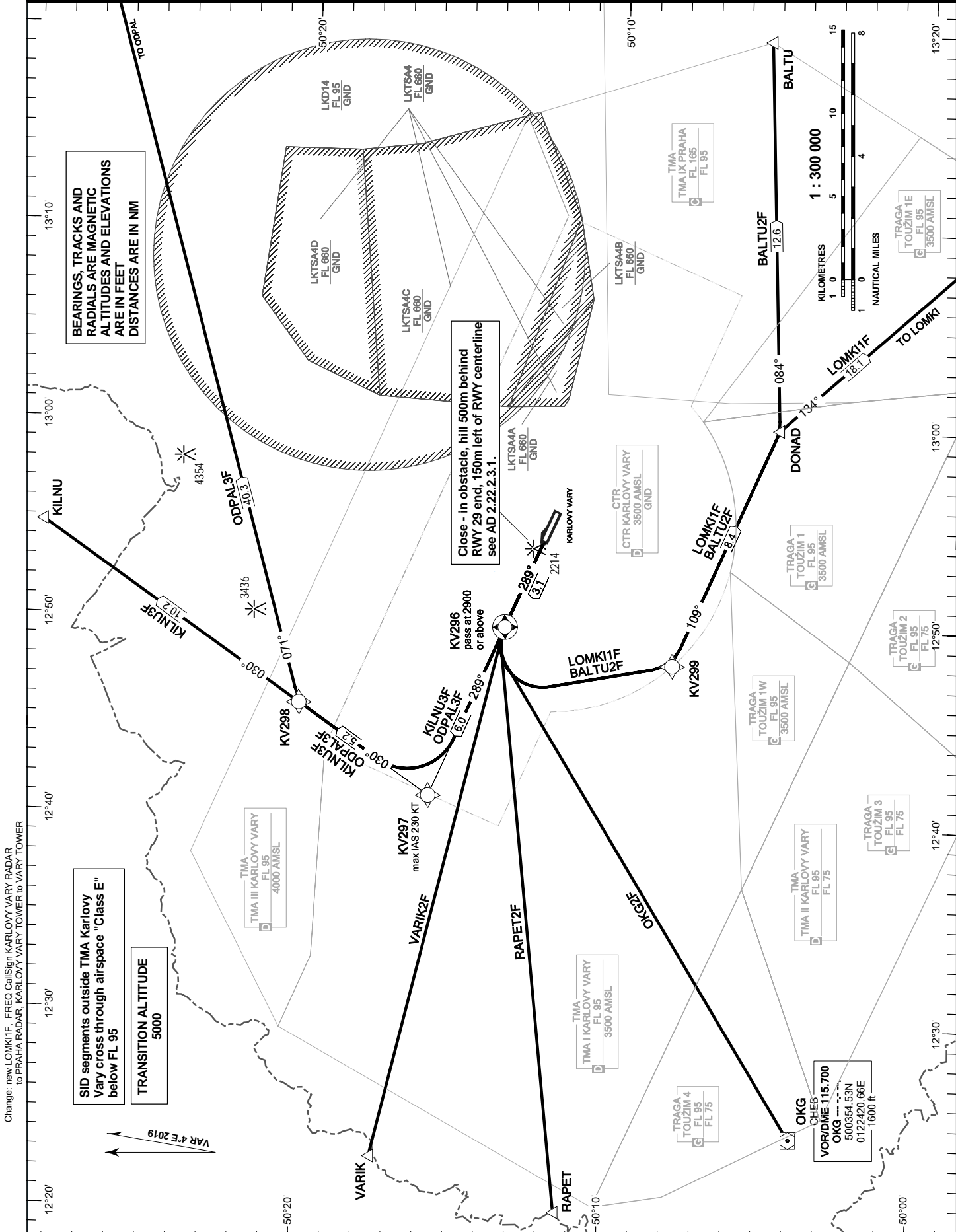


**RNAV STANDARD  
DEPARTURE CHART-  
INSTRUMENT (SID) - ICAO**

PRAHA RADAR	118.650
VARY TOWER	121.230
KARLOVY VARY ATIS	118.955
EMERGENCY FREQ	121.500



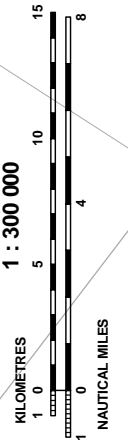
**KARLOVY VARY  
RWY 29**



BEARINGS, TRACKS AND RADIALS ARE MAGNETIC ALTITUDES AND ELEVATIONS ARE IN FEET DISTANCES ARE IN NMI

Close - in obstacle, hill 500m behind RWY 29 end, 150m left of RWY centerline see AD 2.22.2.3.1.

SID segments outside TMA Karlovy Vary cross through airspace "Class E" below FL 95  
TRANSITION ALTITUDE 5000



Change: new LOMK1F, FREQ CallSign KARLOVY VARY RADAR to PRAHA RADAR, KARLOVY VARY TOWER to VARY TOWER

VAR 4°E 2019